

XC6124C216MG-G



Torex Semiconductor Ltd.

IC WATCHDOG TIMER SOT-25

Lead free / RoHS Compliant

Integrated Circuits (ICs)

[XC6124C216MG-G.pdf](#)

Buy Now

Out Stock

0 pcs

Minimum:1

Multiples:100

Manufacturer lead time 10 weeks

part#XC6124C216MG-G is available, see description of XC6124C216MG-G as below .

use the request quote form to request XC6124C216MG-G price and lead time.

Buy Electronic Components at zeanoit.com .we are an independent distributor of electronic components with extensive inventory in stock.

The price and lead time for XC6124C216MG-G depending on the quantity required, availability and warehouse location.Contact us today and our sales team will send you quotation soon.

Email: sales@zeanoit.com

Shopping Process

1

Confirm the product

2

submit the order

3

payment

4

wait for delivery

5

receive the goods

Specifications

Voltage - Threshold:	1.6V
Type:	Watchdog Circuit
Supplier Device Package:	SOT-25
Series:	-
Reset Timeout:	50 ms Typical
Reset:	Active Low
Packaging:	Tape & Reel (TR)
Package / Case:	SC-74A, SOT-753
Output:	Open Drain or Open Collector
Operating Temperature:	-40°C ~ 85°C (TA)
Number of Voltages Monitored:	1
Mounting Type:	Surface Mount

Related products



XC6124A749ER-G
IC WATCHDOG TIMER 6-USP
[Torex Semiconductor Ltd](#)

RFQ



XC6124C216ER-G
IC WATCHDOG TIMER 6-USP
[Torex Semiconductor Ltd](#)

RFQ



XC6124C217ER-G
IC WATCHDOG TIMER 6-USP
[Torex Semiconductor Ltd](#)

RFQ



XC6124A749MR-G
IC WATCHDOG TIMER SOT-25
[Torex Semiconductor Ltd](#)

RFQ



XC6124C218MG-G
IC WATCHDOG TIMER SOT-25
[Torex Semiconductor Ltd](#)

RFQ



XC6124C219ER-G
IC WATCHDOG TIMER 6-USP
[Torex Semiconductor Ltd](#)

RFQ



XC6124A750MR-G
IC WATCHDOG TIMER SOT-25
[Torex Semiconductor Ltd](#)

RFQ



XC6124C217MG-G
IC WATCHDOG TIMER SOT-25
[Torex Semiconductor Ltd](#)

RFQ



XC6124C218ER-G
IC WATCHDOG TIMER 6-USP
[Torex Semiconductor Ltd](#)

RFQ



XC6124A750ER-G
IC WATCHDOG TIMER 6-USP
[Torex Semiconductor Ltd](#)

RFQ

Guess You May Looking For



RG1005N-3570-B-T1
RES SMD 357 OHM 0.1% 1/16W 0402
[Susumu](#)

RFQ



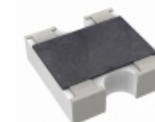
RG1608P-1181-C-T5
RES SMD 1.18K OHM 1/10W 0603
[Susumu](#)

RFQ



RG2012N-2552-B-T1
RES SMD 25.5K OHM 0.1% 1/8W 0805
[Susumu](#)

RFQ



AF162-JR-0756RL
RES ARRAY 2 RES 56 OHM 0606
[Yageo](#)

RFQ



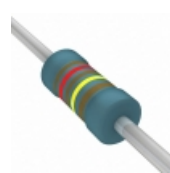
YC324-FK-0720RL
RES ARRAY 4 RES 20 OHM 2012
[Yageo](#)

RFQ



MJ1331FE-R52
RES 1.33K OHM 1/8W 1% AXIAL
[Ohmite](#)

RFQ



MBB02070C1214FRP00
RES 1.21M OHM 0.6W 1% AXIAL
[Vishay BC Components](#)

RFQ



CMF55499R00FKEA70
RES 499 OHM 1/2W 1% AXIAL
[Vishay Dale](#)

RFQ



RN55C3160FR36
RES 316 OHM 1/8W 1% AXIAL
[Vishay Dale](#)

RFQ



RNF14BAE4K93
RES 4.93K OHM 1/4W .1% AXIAL
[Stackpole Electronics Inc.](#)

RFQ