

BTS5562EAUMA1

International Rectifier (Infineon Technologies)

IC LED DRVR RGLTR DIM 24A 36DSO

Lead free / RoHS Compliant

Integrated Circuits (ICs)

[BTS5562EAUMA1.pdf](#)

part#BTS5562EAUMA1 is available, see description of BTS5562EAUMA1 as below . use the request quote form to request BTS5562EAUMA1 price and lead time. Buy Electronic Components at zeanoit.com .we are an independent distributor of electronic components with extensive inventory in stock. The price and lead time for BTS5562EAUMA1 depending on the quantity required, availability and warehouse location.Contact us today and our sales team will send you quotation soon. Email: sales@zeanoit.com

Shopping Process

1

Confirm the product

2

submit the order

3

payment

4

wait for delivery

5

receive the goods

Specifications

Voltage - Supply (Min):	5.5V
Voltage - Supply (Max):	28V
Voltage - Output:	-
Type:	DC DC Regulator
Topology:	Switched Capacitor (Charge Pump)
Supplier Device Package:	PG-DSO-36
Series:	-
Packaging:	Tape & Reel (TR)
Package / Case:	36-BSSOP (0.295", 7.50mm Width) Exposed Pad
Operating Temperature:	-40°C ~ 150°C (TJ)
Number of Outputs:	5
Mounting Type:	Surface Mount
Internal Switch(s):	Yes
Frequency:	-
Dimming:	SPI
Current - Output / Channel:	24A
Applications:	Automotive

Related products


BTS5576G
[Infineon](#)

RFQ


BTS5572EAUMA1

 IC LED DRVR RGLTR DIM 24A 36DSO
[Infineon Technologies](#)

RFQ


BTS5576GXUMA1

 IC LED DRIVER RGLTR DIM 36DSO
[Infineon Technologies](#)

RFQ


BTS555E3146
[INFINEON](#)

RFQ


BTS5541G
[INFINEON](#)

RFQ


BTS5572E
[INF](#)

RFQ


BTS555 E3146

 IC SW PWR HISIDE TO-218-5-146
[Infineon Technologies](#)

RFQ


BTS5562E
[INF](#)

RFQ


BTS555

 IC HISIDE PWR SWITCH TO218AB/5-1
[Infineon Technologies](#)

RFQ


BTS5566GXUMA1

 IC LED DRIVER RGLTR DIM 36DSO
[Infineon Technologies](#)

RFQ

Guess You May Looking For


HRG3216Q-10R5-D-T1

 RES SMD 10.5 OHM 0.5% 1W 1206
[Susumu](#)

RFQ


HRG3216Q-45R3-D-T1

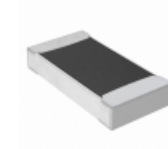
 RES SMD 45.3 OHM 0.5% 1W 1206
[Susumu](#)

RFQ


RG2012N-2670-W-T1

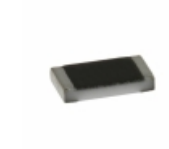
 RES SMD 267 OHM 0.05% 1/8W 0805
[Susumu](#)

RFQ


RNCF1206BKY1K00

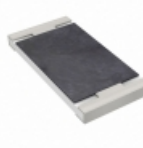
 RES SMD 1K OHM 0.1% 1/4W 1206
[Stackpole Electronics Inc.](#)

RFQ


TNPW08055K60BEEN

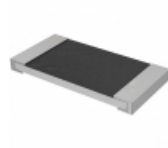
 RES SMD 5.6K OHM 0.1% 1/8W 0805
[Vishay Dale](#)

RFQ


RT2512CKB0753K6L

 RES SMD 53.6KOHM 0.25% 3/4W 2512
[Yageo](#)

RFQ


RHC2512FT200R

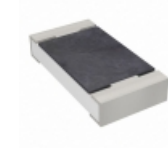
 RES SMD 200 OHM 1% 2W 2512
[Stackpole Electronics Inc.](#)

RFQ


RG2012V-431-D-T5

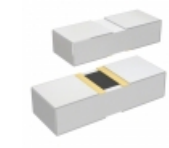
 RES SMD 430 OHM 0.5% 1/8W 0805
[Susumu](#)

RFQ


RT1206WRD0729R4L

 RES SMD 29.4 OHM 0.05% 1/4W 1206
[Yageo](#)

RFQ


PHP00603E11R8BST1

 RES SMD 11.8 OHM 0.1% 3/8W 0603
[Vishay Thin Film](#)

RFQ