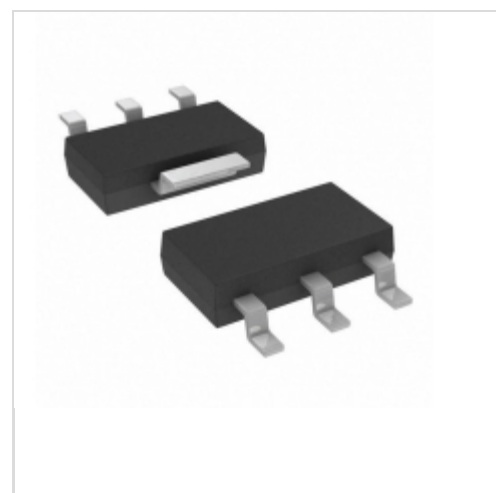


## AUIPS2041L



### International Rectifier (Infineon Technologies)

IC SW IPS 1CH LOW SIDE SOT223

Lead free / RoHS Compliant

Integrated Circuits (ICs)

[AUIPS2041L.pdf](#)

[Buy Now](#)

We can supply AUIPS2041L, use the request quote form to request AUIPS2041L price and lead time. Zeano is a professional electronic components distributor. With 3+ Million line items of available electronic components can ship in short lead-time, over 250 thousand part numbers of electronic components in stock for immediately delivery, which may include part number AUIPS2041L. The price and lead time for AUIPS2041L depending on the quantity required and warehouse location. Contact us and our sales representative will provide you price. We look forward to work with you.

## Shopping Process

1

Confirm the product

2

submit the order

3

payment

4

wait for delivery

5

receive the goods

## Specifications

<b>Voltage - Supply (Vcc/Vdd):</b>	Not Required
<b>Voltage - Load:</b>	60V (Max)
<b>Switch Type:</b>	General Purpose
<b>Supplier Device Package:</b>	SOT-223
<b>Series:</b>	Automotive, AEC-Q100
<b>Rds On (Typ):</b>	100 mOhm
<b>Ratio - Input:Output:</b>	1:1
<b>Packaging:</b>	Tube
<b>Package / Case:</b>	TO-261-4, TO-261AA
<b>Output Type:</b>	N-Channel
<b>Output Configuration:</b>	Low Side
<b>Operating Temperature:</b>	-40°C ~ 150°C (TJ)
<b>Number of Outputs:</b>	1
<b>Interface:</b>	On/Off
<b>Input Type:</b>	Non-Inverting
<b>Features:</b>	-
<b>Fault Protection:</b>	Current Limiting (Fixed), Over Temperature
<b>Current - Output (Max):</b>	1.4A

## Related products



**AUIPS2041L.**

[IR](#)

[RFQ](#)



**AUIPS2041R**

IC SWITCH IPS 1CH LOW SIDE DPAK  
[Infineon Technologies](#)

[RFQ](#)



**AUIPS1052GTRPBF.**

[IR](#)

[RFQ](#)



**AUIPS2031R**

IC SW IPS 1CH LOW SIDE DPAK  
[Infineon Technologies](#)

[RFQ](#)



**AUIPS2041RTRRPBF**

[IR](#)

[RFQ](#)



**AUIPS2041RTRL**

IC SWITCH IPS 1CH LOW SIDE DPAK  
[Infineon Technologies](#)

[RFQ](#)



**AUIPS2031RTRL**

IC SW IPS 1CH LOW SIDE DPAK  
[Infineon Technologies](#)

[RFQ](#)



**AUIPS1052GTR.**

[IR](#)

[RFQ](#)



**AUIPS2041LTR**

IC SW IPS 1CH LOW SIDE SOT223  
[Infineon Technologies](#)

[RFQ](#)

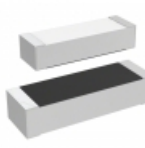


**AUIPS2031RTR**

[InternationalRectifier](#)

[RFQ](#)

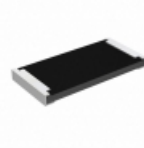
## Guess You May Looking For



**M55342H04B1E00RT5**

RES SMD 1K OHM 1% 0.15W 1505  
[Vishay Dale](#)

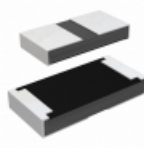
[RFQ](#)



**RCP2512B51R0GS6**

RES SMD 51 OHM 2% 22W 2512  
[Vishay Dale](#)

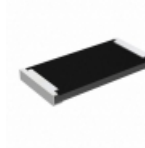
[RFQ](#)



**RCP1206W11R0JET**

RES SMD 11 OHM 5% 11W 1206  
[Vishay Dale](#)

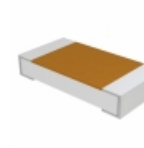
[RFQ](#)



**RCP2512B110RJWB**

RES SMD 110 OHM 5% 22W 2512  
[Vishay Dale](#)

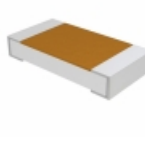
[RFQ](#)



**D55342E07B361BRWS**

RES SMD 361K OHM 0.1% 1/4W 1206  
[Vishay Dale](#)

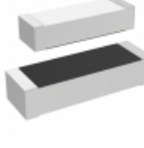
[RFQ](#)



**D55342K07B383BRWS**

RES SMD 383K OHM 0.1% 1/4W 1206  
[Vishay Dale](#)

[RFQ](#)



**M55342E04B145BRWS**

RES SMD 145K OHM 0.1% 0.15W 1505  
[Vishay Dale](#)

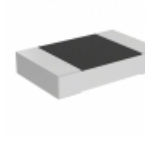
[RFQ](#)



**M55342H12B20E0RWS**

RES SMD 20K OHM 1% 1/10W 0603  
[Vishay Dale](#)

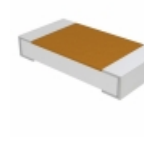
[RFQ](#)



**PLTT0805Z2231QGT5**

RES SMD 2.23KOHM 0.02% 1/4W 0805  
[Vishay Thin Film](#)

[RFQ](#)



**D55342E07B66D5RTI**

RES SMD 66.5 OHM 1% 1/4W 1206  
[Vishay Dale](#)

[RFQ](#)