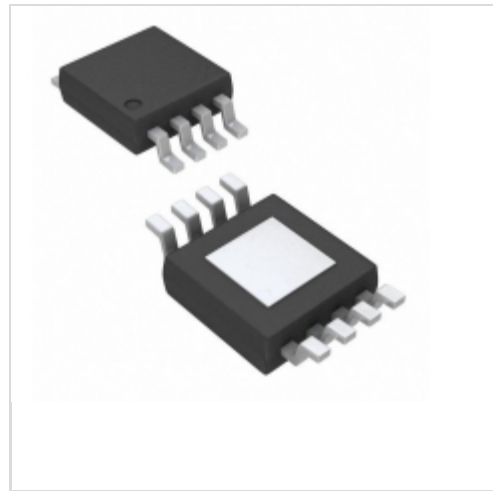


MAX17604AUA+T



Maxim Integrated

IC MOSFET DRVR 4A DUAL 8UMAX
Lead free / RoHS Compliant
Integrated Circuits (ICs)

- [1.MAX17604AUA+T.pdf](#)
- [2.MAX17604AUA+T.pdf](#)

Buy Now

Out Stock

0 pcs

Minimum:1

Multiples:100

Manufacturer lead time 10 weeks

Images are for reference only.

See Product Specifications for product details.

If you are interested to buy MAX17604AUA+T,Just Email us.

Sales@zeanoit.com

our sales team will reply you within 24 hours

Shopping Process

1

Confirm the product

2

submit the order

3

payment

4

wait for delivery

5

receive the goods

Specifications

Voltage - Supply:	4 V ~ 14 V
Supplier Device Package:	8-uMax-EP
Series:	-
Rise / Fall Time (Typ):	40ns, 25ns
Packaging:	Tape & Reel (TR)
Package / Case:	8-TSSOP, 8-MSOP (0.118", 3.00mm Width) Exposed Pad
Operating Temperature:	-40°C ~ 150°C (TJ)
Number of Drivers:	2
Mounting Type:	Surface Mount
Logic Voltage - VIL, VIH:	2V, 4.25V
Input Type:	Non-Inverting
Gate Type:	N-Channel MOSFET
Driven Configuration:	Low-Side
Current - Peak Output (Source, Sink):	4A, 4A
Channel Type:	Independent

Related products



MAX17605ASA+
IC MOSFET DRVR 4A DUAL 8SOIC
[Maxim Integrated](#)

RFQ



MAX17605ASA+T
IC MOSFET DRVR 4A DUAL 8SOIC
[Maxim Integrated](#)

RFQ



MAX17603EVKIT#
EVAL KIT FOR MAX17603
[Maxim Integrated](#)

RFQ



MAX17604EVKIT#
EVAL KIT FOR MAX17604
[Maxim Integrated](#)

RFQ



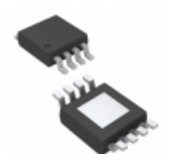
MAX17604ASA+T
IC MOSFET DRVR 4A DUAL 8SOIC
[Maxim Integrated](#)

RFQ



MAX17604ASA+
IC MOSFET DRVR 4A DUAL 8SOIC
[Maxim Integrated](#)

RFQ



MAX17605AUA+
IC MOSFET DRVR 4A DUAL 8UMAX
[Maxim Integrated](#)

RFQ



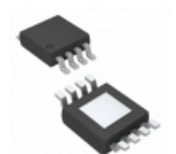
MAX17605ATA+T
IC MOSFET DRVR 4A DUAL 8TDFN
[Maxim Integrated](#)

RFQ



MAX17604ATA+T
IC MOSFET DRVR 4A DUAL 8TDFN
[Maxim Integrated](#)

RFQ



MAX17604AUA+
IC MOSFET DRVR 4A DUAL 8UMAX
[Maxim Integrated](#)

RFQ

Guess You May Looking For



RT1206CRB07649RL
RES SMD 649 OHM 0.25% 1/4W 1206
[Yageo](#)

RFQ



RNCF2010BTE360K
RES SMD 360K OHM 0.1% 1/3W 2010
[Stackpole Electronics Inc.](#)

RFQ



CRCW121895K3FKEK
RES SMD 95.3K OHM 1% 1W 1218
[Vishay Dale](#)

RFQ



CRCW12189K76FKEK
RES SMD 9.76K OHM 1% 1W 1218
[Vishay Dale](#)

RFQ



RG1608N-7321-B-T5
RES SMD 7.32KOHM 0.1% 1/10W 0603
[Susumu](#)

RFQ



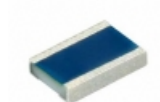
RT0805WRE0744K2L
RES SMD 44.2KOHM 0.05% 1/8W 0805
[Yageo](#)

RFQ



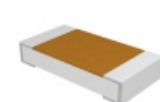
RCL12251K40FKEG
RES SMD 1.4K OHM 2W 2512 WIDE
[Vishay Dale](#)

RFQ



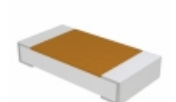
MCW0406MD6659BP100
RES SMD 66.5 OHM 1/4W 0604 WIDE
[Vishay Beyschlag](#)

RFQ



TNPW12062K32BETA
RES SMD 2.32K OHM 0.1% 1/4W 1206
[Vishay Dale](#)

RFQ



TNPW120689K8BEEA
RES SMD 89.8K OHM 0.1% 1/4W 1206
[Vishay Dale](#)

RFQ