

ADP3412JR

[AMI Semiconductor / ON Semiconductor](#)

IC MOSFET DVR DUAL N-CH 8-SOIC
 Contains lead / RoHS non-compliant
 Integrated Circuits (ICs)

part#ADP3412JR is available, see description of ADP3412JR as below .
 use the request quote form to request ADP3412JR price and lead time.
 Buy Electronic Components at zeanoit.com .we are an independent distributor of
 electronic components with extensive inventory in stock.
 The price and lead time for ADP3412JR depending on the quantity required,
 availability and warehouse location.Contact us today and our sales team will send you
 quotation soon.
 Email: sales@zeanoit.com

Shopping Process

1

Confirm the product

2

submit the order

3

payment

4

wait for delivery

5

receive the goods

Specifications

Voltage - Supply:	4.15 V ~ 7.5 V
Supplier Device Package:	8-SOIC
Series:	-
Rise / Fall Time (Typ):	20ns, 20ns
Packaging:	Tube
Package / Case:	8-SOIC (0.154", 3.90mm Width)
Operating Temperature:	0°C ~ 125°C (TJ)
Number of Drivers:	2
Mounting Type:	Surface Mount
Logic Voltage - VIL, VIH:	0.8V, 2V
Input Type:	Non-Inverting
High Side Voltage - Max (Bootstrap):	30V
Gate Type:	N-Channel MOSFET
Driven Configuration:	Half-Bridge
Current - Peak Output (Source, Sink):	-
Channel Type:	Synchronous

Related products


ADP3412JR-REEL7
[ADI](#)

RFQ


ADP3412J
 in stock
[AD](#)

RFQ


ADP3412JR
 in stock
[ADI](#)

RFQ


ADP3413
 in stock
[ADI](#)

RFQ


ADP3410KRU-REEL
 IC MOSFET DVR DUAL N-CH 14TSSOP
[ON Semiconductor](#)

RFQ


ADP3412
 in stock
[ADI](#)

RFQ


ADP3410KRU-REEL7
 IC MOSFET DVR DUAL N-CH 14TSSOP
[ON Semiconductor](#)

RFQ


ADP3412JR-REEL
 in stock
[AD](#)

RFQ

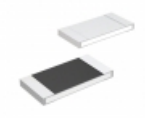

ADP3412TR
[ADI](#)

RFQ

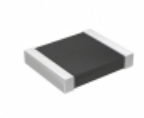

ADP3412JR-REELT
 in stock
[AD](#)

RFQ

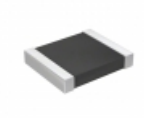
Guess You May Looking For


CRA2512-JZ-R075ELF
 RES SMD 0.075 OHM 5% 3W 2512
[Bourns Inc.](#)

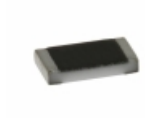
RFQ


RT1210CRE0720KL
 RES SMD 20K OHM 0.25% 1/4W 1210
[Yageo](#)

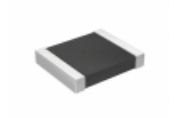
RFQ


RT1210CRE07110RL
 RES SMD 110 OHM 0.25% 1/4W 1210
[Yageo](#)

RFQ


TNPW0805182KBEEA
 RES SMD 182K OHM 0.1% 1/8W 0805
[Vishay Dale](#)

RFQ


RT1210CRD071K15L
 RES SMD 1.15KOHM 0.25% 1/4W 1210
[Yageo](#)

RFQ


RG1608P-1153-W-T1
 RES SMD 115KOHM 0.05% 1/10W 0603
[Susumu](#)

RFQ


RG1608P-113-W-T1
 RES SMD 11K OHM 0.05% 1/10W 0603
[Susumu](#)

RFQ


RT1206BRB07180KL
 RES SMD 180K OHM 0.1% 1/4W 1206
[Yageo](#)

RFQ


RT0805WRE0747R5L
 RES SMD 47.5 OHM 0.05% 1/8W 0805
[Yageo](#)

RFQ


CSNL1206FT13L0
 RES SMD 0.013 OHM 1% 1W 1206
[Stackpole Electronics Inc.](#)

RFQ