

**36107406S**



**Würth Electronics**

WE-SHC SHIELDING CABINET 44.37 X

Lead free / RoHS Compliant

RF/IF and RFID

[36107406S.pdf](#)

**Buy Now**

We can supply Würth Electronics 36107406S, use the request quote form to request 36107406S price, Würth Electronics Datasheet PDF and lead time. Zeanoit.com is a professional electronic components distributor. With 3+ Million line items of available electronic components can ship in short lead-time, over 250 thousand part numbers of electronic components in stock for immediately delivery, which may include part number 36107406S. The price and lead time for 36107406S depending on the quantity required, availability and warehouse location.

**In Stock**

**80 pcs**

Minimum:1

Multiples:100

Manufacturer lead time 10 weeks

**PRICE**

1 pcs	\$5.19
10 pcs	\$4.635
25 pcs	\$4.172

Shopping Process

**1**

Confirm the product

**2**

submit the order

**3**

payment

**4**

wait for delivery

**5**

receive the goods

Specifications

<b>Ventilation:</b>	-
<b>Type:</b>	Frame
<b>Series:</b>	WE-SHC
<b>Mounting Type:</b>	Snap Fit
<b>Height - Overall:</b>	0.384" (9.75mm)

Related products



**36106**  
TORXPLUS KEY L SHAPE IP6 1.5"  
[Wiha](#)

RFQ



**36106326S**  
WE-SHC SHIELDING CABINET 32 X 32  
[Würth Electronics Inc.](#)

RFQ



**3610IN**  
in stock  
[ST](#)

RFQ



**3610INMB58 30**  
[ST](#)

RFQ



**36107**  
TORXPLUS KEY L SHAPE IP7 1.7"  
[Wiha](#)

RFQ



**36105266S**  
WE-SHC SHIELDING CABINET 26.21 X  
[Würth Electronics Inc.](#)

RFQ



**3610KL-04W-B10-D00**  
FAN AXIAL 92X25MM 12VDC WIRE  
[NMB Technologies Corporation](#)

RFQ



**36108**  
TORXPLUS KEY L SHAPE IP8 1.77"  
[Wiha](#)

RFQ



**36103605**  
BOARD SHIELD 60X60MM SMD FRAME  
[Würth Electronics Inc.](#)

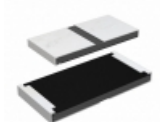
RFQ



**36109**  
TORXPLUS KEY L SHAPE IP9 1.89"  
[Wiha](#)

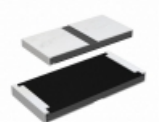
RFQ

Guess You May Looking For



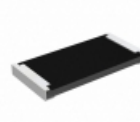
**RCP2512W12R0GS2**  
RES SMD 12 OHM 2% 22W 2512  
[Vishay Dale](#)

RFQ



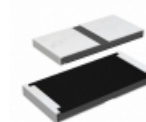
**RCP2512W270RJEC**  
RES SMD 270 OHM 5% 22W 2512  
[Vishay Dale](#)

RFQ



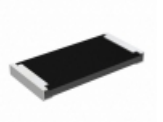
**RCP2512B820RGS2**  
RES SMD 820 OHM 2% 22W 2512  
[Vishay Dale](#)

RFQ



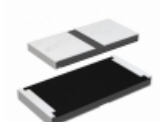
**RCP2512W300RJEC**  
RES SMD 300 OHM 5% 22W 2512  
[Vishay Dale](#)

RFQ



**RCP2512B43R0JEC**  
RES SMD 43 OHM 5% 22W 2512  
[Vishay Dale](#)

RFQ



**RCP2512W39R0JS2**  
RES SMD 39 OHM 5% 22W 2512  
[Vishay Dale](#)

RFQ



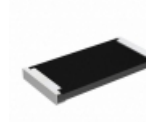
**MC102522504JE**  
RES SMD 2.5M OHM 5% 1.5W 5025  
[Ohmite](#)

RFQ



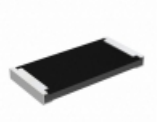
**M55342E02B249ART5**  
RES SMD 249 OHM 0.1% 1/8W 0505  
[Vishay Dale](#)

RFQ



**RCP2512B75R0GS2**  
RES SMD 75 OHM 2% 22W 2512  
[Vishay Dale](#)

RFQ



**RCP2512B390RGS2**  
RES SMD 390 OHM 2% 22W 2512  
[Vishay Dale](#)

RFQ