

## A4960KJPTR-A-T



**Allegro MicroSystems, LLC.**  
 IC MOTOR CONTROLLER SPI 32LQFP  
 Lead free / RoHS Compliant  
 Integrated Circuits (ICs)

[A4960KJPTR-A-T.pdf](#)

**Buy Now**

**Out Stock**  
**0 pcs**  
 Minimum:1  
 Multiples:100  
 Manufacturer lead time 10 weeks

part#A4960KJPTR-A-T is available, see description of A4960KJPTR-A-T as below .  
 use the request quote form to request A4960KJPTR-A-T price and lead time.  
 Buy Electronic Components at zeanoit.com .we are an independent distributor of  
 electronic components with extensive inventory in stock.  
 The price and lead time for A4960KJPTR-A-T depending on the quantity required,  
 availability and warehouse location.Contact us today and our sales team will send you  
 quotation soon.  
 Email: sales@zeanoit.com

### Shopping Process

**1**

Confirm the product

**2**

submit the order

**3**

payment

**4**

wait for delivery

**5**

receive the goods

### Specifications

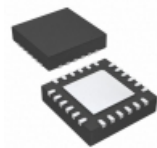
<b>Voltage - Supply:</b>	3 V ~ 5.5 V
<b>Voltage - Load:</b>	7 V ~ 50 V
<b>Technology:</b>	Power MOSFET
<b>Supplier Device Package:</b>	32-LQFP (7x7)
<b>Step Resolution:</b>	-
<b>Series:</b>	-
<b>Packaging:</b>	Tape & Reel (TR)
<b>Package / Case:</b>	32-LQFP
<b>Output Configuration:</b>	Pre-Driver - Half Bridge (3)
<b>Operating Temperature:</b>	-40°C ~ 150°C (TA)
<b>Mounting Type:</b>	Surface Mount
<b>Motor Type - Stepper:</b>	-
<b>Motor Type - AC, DC:</b>	Brushless DC (BLDC)
<b>Interface:</b>	SPI
<b>Function:</b>	Controller - Commutation, Direction Management
<b>Current - Output:</b>	-
<b>Applications:</b>	Automotive

### Related products



**A4963GLPTR-T**  
 IC MOTOR CONTROLLER  
 Allegro MicroSystems, LLC

RFQ



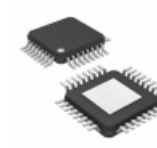
**A4957SESTR-T**  
 IC MOTOR CONTROLLER PAR 24QFN  
 Allegro MicroSystems, LLC

RFQ



**A495P2**  
 SWITCH HARDWARE  
 APEM Inc.

RFQ



**A4960KJPTR-T**  
 IC MOTOR CONTROLLER SPI 32LQFP  
 Allegro MicroSystems, LLC

RFQ



**A4970GLBTR-T**  
 IC MOTOR DRIVER PAR 24SOIC  
 Allegro MicroSystems, LLC

RFQ



**A4959LPTR-T**  
 ALLEGRO

RFQ



**A495P1**  
 SWITCH HARDWARE  
 APEM Inc.

RFQ



**A4960SJPTR-T**  
 ALLEGRO

RFQ



**A4962KLPTTR-T**  
 IC MOTOR CONTROLLER  
 Allegro MicroSystems, LLC

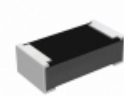
RFQ



**A4959GLPTR-T**  
 DC MOTOR DRIVER  
 Allegro MicroSystems, LLC

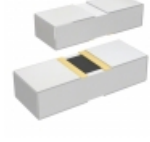
RFQ

### Guess You May Looking For



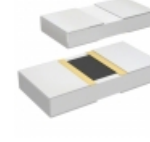
**RCP0603B1K50JEA**  
 RES SMD 1.5K OHM 5% 3.9W 0603  
 Vishay Dale

RFQ



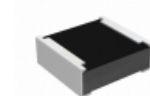
**PHP00603E1690BST1**  
 RES SMD 169 OHM 0.1% 3/8W 0603  
 Vishay Thin Film

RFQ



**PHP00805H1011BBT1**  
 RES SMD 1.01K OHM 0.1% 5/8W 0805  
 Vishay Thin Film

RFQ



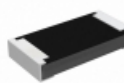
**RCP0505B39R0GTP**  
 RES SMD 39 OHM 2% 5W 0505  
 Vishay Dale

RFQ



**RP73D1J422RBTG**  
 RES SMD 422 OHM 0.1% 1/10W 0603  
 TE Connectivity Passive Product

RFQ



**RCP1206B180RJEB**  
 RES SMD 180 OHM 5% 11W 1206  
 Vishay Dale

RFQ



**RG3216V-1501-D-T5**  
 RES SMD 1.5K OHM 0.5% 1/4W 1206  
 Susumu

RFQ



**RG3216V-8251-D-T5**  
 RES SMD 8.25K OHM 0.5% 1/4W 1206  
 Susumu

RFQ



**RG1005V-431-W-T5**  
 RES SMD 430 OHM 0.05% 1/16W 0402  
 Susumu

RFQ



**RG1608V-1741-P-T1**  
 RES SMD 1.74K OHM 1/10W 0603  
 Susumu

RFQ

