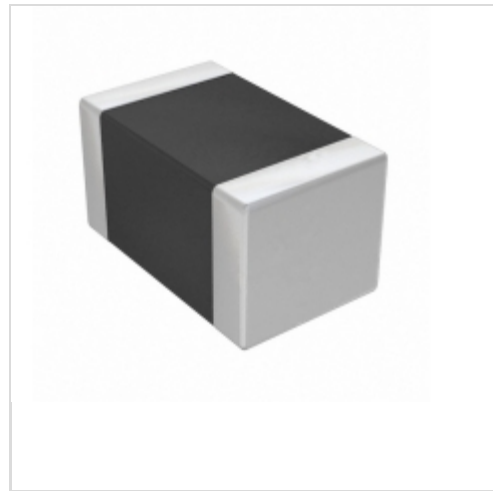


**748422245**



**Würth Electronics**

SMD-MULTILAYER LC-BALUN WE-BAL  
Lead free / RoHS Compliant  
RF/IF and RFID

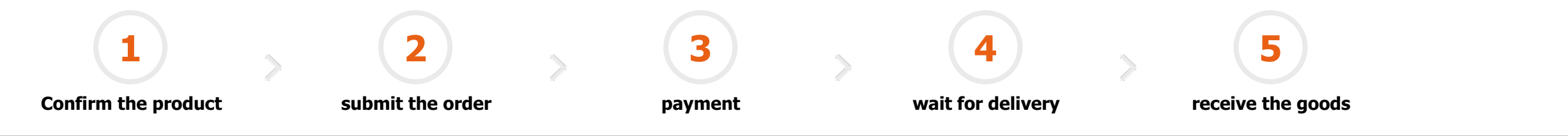
[748422245.pdf](#)

**Buy Now**

part#748422245 is available, see description of 748422245 as below .  
use the request quote form to request 748422245 price and lead time.  
Buy Electronic Components at zeanoit.com .we are an independent distributor of electronic components with extensive inventory in stock.  
The price and lead time for 748422245 depending on the quantity required, availability and warehouse location.Contact us today and our sales team will send you quotation soon.  
Email: sales@zeanoit.com

**Out Stock**  
**0 pcs**  
Minimum:1  
Multiples:100  
Manufacturer lead time 10 weeks

Shopping Process



Specifications

<b>Series:</b>	-
<b>Return Loss (Min):</b>	-
<b>Phase Difference:</b>	180° ±10
<b>Packaging:</b>	Tape & Reel (TR)
<b>Package / Case:</b>	0805 (2012 Metric)
<b>Mounting Type:</b>	Surface Mount
<b>Insertion Loss (Max):</b>	0.76dB
<b>Impedance - Unbalanced/Balanced:</b>	50 / 200 Ohm
<b>Frequency Range:</b>	2.4GHz ~ 2.5GHz

Related products

 <b>748412245</b> CHIP BALUN 2400-2500 MHZ 0603 <a href="#">Würth Electronics Inc.</a> <b>RFQ</b>	 <b>748425245</b> CHIP BALUN 2400-2500 MHZ 0805 <a href="#">Würth Electronics Inc.</a> <b>RFQ</b>	 <b>748468-1</b> CONN D-SUB HOUSING KIT PLUG 15P <a href="#">TE Connectivity AMP Connectors</a> <b>RFQ</b>	 <b>748415245</b> CHIP BALUN 2400-2500 MHZ 0603 <a href="#">Würth Electronics Inc.</a> <b>RFQ</b>	 <b>748441-2</b> CONN DSUB RCPT 25POS VERT <a href="#">TE Connectivity AMP Connectors</a> <b>RFQ</b>
 <b>748421551</b> CHIP BALUN 5150-5875 MHZ 0805 <a href="#">Würth Electronics Inc.</a> <b>RFQ</b>	 <b>748421245</b> BALUN EMBER351 & 357 0805 SMD <a href="#">Würth Electronics Inc.</a> <b>RFQ</b>	 <b>748440-2</b> CONN DSUB RCPT 15POS VERT <a href="#">TE Connectivity AMP Connectors</a> <b>RFQ</b>	 <b>748411245</b> CHIP BALUN 2400-2500 MHZ 0603 <a href="#">Würth Electronics Inc.</a> <b>RFQ</b>	 <b>748469-1</b> CONN D-SUB HOUSING KIT PLUG 26P <a href="#">TE Connectivity AMP Connectors</a> <b>RFQ</b>

Guess You May Looking For

 <b>RNC2010BTE121K</b> RES SMD 121K OHM 0.1% 1/3W 2010 <a href="#">Stackpole Electronics Inc.</a> <b>RFQ</b>	 <b>RNC2010BTE324K</b> RES SMD 324K OHM 0.1% 1/3W 2010 <a href="#">Stackpole Electronics Inc.</a> <b>RFQ</b>	 <b>RG3216N-1373-D-T5</b> RES SMD 137K OHM 0.5% 1/4W 1206 <a href="#">Susumu</a> <b>RFQ</b>	 <b>AA1218FK-072R1L</b> RES SMD 2.1 OHM 1W 1812 WIDE <a href="#">Yageo</a> <b>RFQ</b>	 <b>CPF1206B390KE1</b> RES SMD 390K OHM 0.1% 1/8W 1206 <a href="#">TE Connectivity Passive Product</a> <b>RFQ</b>
 <b>CSR1225JTR200</b> RES SMD 0.2 OHM 5% 3W 2512 WIDE <a href="#">Stackpole Electronics Inc.</a> <b>RFQ</b>	 <b>CPF1206B196RE1</b> RES SMD 196 OHM 0.1% 1/8W 1206 <a href="#">TE Connectivity Passive Product</a> <b>RFQ</b>	 <b>CPF1206B13R3E1</b> RES SMD 13.3 OHM 0.1% 1/8W 1206 <a href="#">TE Connectivity Passive Product</a> <b>RFQ</b>	 <b>CPF1206B16K2E1</b> RES SMD 16.2K OHM 0.1% 1/8W 1206 <a href="#">TE Connectivity Passive Product</a> <b>RFQ</b>	 <b>CPF1206B910RE1</b> RES SMD 910 OHM 0.1% 1/8W 1206 <a href="#">TE Connectivity Passive Product</a> <b>RFQ</b>