

## FPF12045UCX



Fairchild/ON Semiconductor

IC POWER DIST SLEW CNTRL 4WLCSP

Lead free / RoHS Compliant

Integrated Circuits (ICs)

[FPF12045UCX.pdf](#)

**Buy Now**

**In Stock**

**151 pcs**

Minimum:1

Multiples:100

Manufacturer lead time 10 weeks

### PRICE

1 pcs	\$0.77
10 pcs	\$0.68
100 pcs	\$0.521
500 pcs	\$0.412
1000 pcs	\$0.33

part#FPF12045UCX is available, see description of FPF12045UCX as below .

use the request quote form to request FPF12045UCX price and lead time.

Buy Electronic Components at zeanoit.com .we are an independent distributor of electronic components with extensive inventory in stock.

The price and lead time for FPF12045UCX depending on the quantity required, availability and warehouse location.Contact us today and our sales team will send you quotation soon.

Email: sales@zeanoit.com

## Shopping Process

**1**

Confirm the product

**2**

submit the order

**3**

payment

**4**

wait for delivery

**5**

receive the goods

## Specifications

<b>Voltage - Supply (Vcc/Vdd):</b>	Not Required
<b>Voltage - Load:</b>	1.2 V ~ 5.5 V
<b>Switch Type:</b>	General Purpose
<b>Supplier Device Package:</b>	4-WLCSP (0.76x0.76)
<b>Series:</b>	IntelliMAX™
<b>Rds On (Typ):</b>	45 mOhm
<b>Ratio - Input:Output:</b>	1:1
<b>Packaging:</b>	Original-Reel®
<b>Package / Case:</b>	4-UFBGA, WLCSP
<b>Output Type:</b>	P-Channel
<b>Output Configuration:</b>	High Side
<b>Operating Temperature:</b>	-40°C ~ 85°C (TA)
<b>Number of Outputs:</b>	1
<b>Interface:</b>	On/Off
<b>Input Type:</b>	Non-Inverting
<b>Features:</b>	Load Discharge, Slew Rate Controlled
<b>Fault Protection:</b>	-
<b>Current - Output (Max):</b>	2.2A

## Related products



**FPF1207UCX**

IC LOAD SWITCH ADV 4WLCSP

[Fairchild/ON Semiconductor](#)

RFQ



**FPF1203LUCX**

IC POWER DIST LOAD SW 4-WLCSP

[Fairchild/ON Semiconductor](#)

RFQ



**FPF1108**

IC LOAD MGMT SWITCH P-CH 4-WLCSP

[Fairchild/ON Semiconductor](#)

RFQ



**FPF1206UCX**

IC LOAD SWITCH ADV 4-WLCSP

[Fairchild/ON Semiconductor](#)

RFQ



**FPF1107**

IC LOAD MGMT SWITCH P-CH 4-WLCSP

[Fairchild/ON Semiconductor](#)

RFQ



**FPF1204UCX**

IC LOAD SWITCH INTELLIMAX 4WLCSP

[Fairchild/ON Semiconductor](#)

RFQ



**FPF1204BUCX**

IC POWER DIST SLEW CNTRL 4WLCSP

[Fairchild/ON Semiconductor](#)

RFQ



**FPF1203UCX**

IC LOAD SWITCH INTELLIMAX 4WLCSP

[Fairchild/ON Semiconductor](#)

RFQ



**FPF1104**

IC LOAD MGMT SWITCH P-CH 4-WLCSP

[Fairchild/ON Semiconductor](#)

RFQ



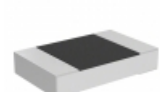
**FPF1205UCX**

IC LOAD SWITCH ADV 4-WLCSP

[Fairchild/ON Semiconductor](#)

RFQ

## Guess You May Looking For

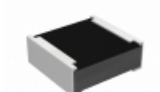


**PLTT0805Z8760AGT5**

RES SMD 876 OHM 0.05% 1/4W 0805

[Vishay Thin Film](#)

RFQ

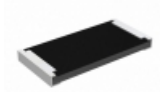


**RCP0505B820RJET**

RES SMD 820 OHM 5% 5W 0505

[Vishay Dale](#)

RFQ



**RCP2512B51R0JED**

RES SMD 51 OHM 5% 22W 2512

[Vishay Dale](#)

RFQ



**CGSSL3R01J**

RES SMD 0.01 OHM 5% 3W 6028

[TE Connectivity Passive Product](#)

RFQ

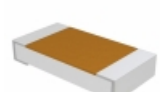


**RC0R5DB360RJE**

RES SMD 360 OHM 5% 1/2W J LEAD

[Ohmite](#)

RFQ

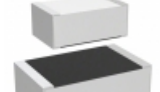


**D55342H07B33D2RWS**

RES SMD 33.2 OHM 1% 1/4W 1206

[Vishay Dale](#)

RFQ

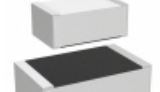


**M55342K06B9B65RWS**

RES SMD 9.65KOHM 0.1% 0.15W 0805

[Vishay Dale](#)

RFQ

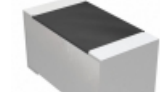


**M55342H06B6E34RWS**

RES SMD 6.34K OHM 1% 0.15W 0705

[Vishay Dale](#)

RFQ



**M55342H12B100KRWS**

RES SMD 100K OHM 5% 1/10W 0603

[Vishay Dale](#)

RFQ



**M55342H12B270GRWS**

RES SMD 270 OHM 2% 1/10W 0603

[Vishay Dale](#)

RFQ

