

## JANTX1N5293-1



**Microsemi**

DIODE CURRENT REG 100V  
Contains lead / RoHS non-compliant  
Integrated Circuits (ICs)

[JANTX1N5293-1.pdf](#)

**Buy Now**

**Out Stock**

**0 pcs**

Minimum:1

Multiples:100

Manufacturer lead time 10 weeks

Images are for reference only.

See Product Specifications for product details.

If you are interested to buy JANTX1N5293-1, Just Email us.

Sales@zeanoit.com

our sales team will reply you within 24 hours

### Shopping Process

**1**

Confirm the product

**2**

submit the order

**3**

payment

**4**

wait for delivery

**5**

receive the goods

### Specifications

<b>Voltage - Input:</b>	100V (Max)
<b>Supplier Device Package:</b>	DO-7
<b>Series:</b>	Military, MIL-PRF-19500/463
<b>Sensing Method:</b>	-
<b>Packaging:</b>	Bulk
<b>Package / Case:</b>	DO-204AA, DO-7, Axial
<b>Operating Temperature:</b>	-65°C ~ 175°C
<b>Mounting Type:</b>	Through Hole
<b>Function:</b>	Current Regulator
<b>Current - Output:</b>	680µA
<b>Accuracy:</b>	±10%

### Related products



**JANTX1N5292-1**

DIODE CURRENT REG 100V  
[Microsemi Corporation](#)

RFQ



**JANTX1N5294UR-1**

DIODE CURRENT REG 100V  
[Microsemi Corporation](#)

RFQ



**JANTX1N5293UR-1**

DIODE CURRENT REG 100V  
[Microsemi Corporation](#)

RFQ



**JANTX1N5292UR-1**

DIODE CURRENT REG 100V  
[Microsemi Corporation](#)

RFQ



**JANTX1N5294UR-1**

DIODE CURRENT REG 100V  
[Aeroflex Metelics, Division of MACOM](#)

RFQ



**JANTX1N5294-1**

DIODE CURRENT REG 100V  
[Microsemi Corporation](#)

RFQ



**JANTX1N5291UR-1**

DIODE REG 500MW DO-213AB  
[Microsemi Corporation](#)

RFQ



**JANTX1N5295-1**

DIODE CURRENT REG 100V  
[Microsemi Corporation](#)

RFQ



**JANTX1N5291UR-1**

DIODE CURRENT REG 100V  
[Aeroflex Metelics, Division of MACOM](#)

RFQ

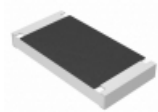


**JANTX1N5291-1**

DIODE CURRENT REG 100V  
[Microsemi Corporation](#)

RFQ

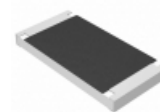
### Guess You May Looking For



**ERJ-S1DF6813U**

RES SMD 681K OHM 1% 3/4W 2010  
[Panasonic Electronic Components](#)

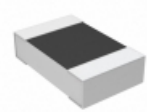
RFQ



**ERJ-S1TF24R9U**

RES SMD 24.9 OHM 1% 1W 2512  
[Panasonic Electronic Components](#)

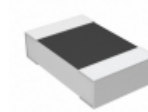
RFQ



**CPF0805B8K45E1**

RES SMD 8.45KOHM 0.1% 1/10W 0805  
[TE Connectivity Passive Product](#)

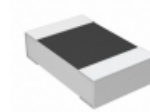
RFQ



**CPF0805B66K5E1**

RES SMD 66.5KOHM 0.1% 1/10W 0805  
[TE Connectivity Passive Product](#)

RFQ



**CPF0805B357KE1**

RES SMD 357K OHM 0.1% 1/10W 0805  
[TE Connectivity Passive Product](#)

RFQ



**AT1206CRD0740K2L**

RES SMD 40.2KOHM 0.25% 1/4W 1206  
[Yageo](#)

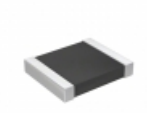
RFQ



**RG3216P-1070-B-T1**

RES SMD 107 OHM 0.1% 1/4W 1206  
[Susumu](#)

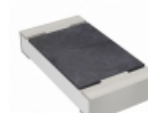
RFQ



**RT1210BRD078K87L**

RES SMD 8.87K OHM 0.1% 1/4W 1210  
[Yageo](#)

RFQ



**RT1206CRC07390KL**

RES SMD 390K OHM 0.25% 1/4W 1206  
[Yageo](#)

RFQ



**RT1206CRC0737K4L**

RES SMD 37.4KOHM 0.25% 1/4W 1206  
[Yageo](#)

RFQ