

AT28C16E-20PC

Microchip Technology

IC EEPROM 16KBIT 200NS 24DIP
 Contains lead / RoHS non-compliant
 Integrated Circuits (ICs)

[AT28C16E-20PC.pdf](#)

Buy Now

We can supply AT28C16E-20PC, use the request quote form to request AT28C16E-20PC price and lead time. Zeano is a professional electronic components distributor. With 3+ Million line items of available electronic components can ship in short lead-time, over 250 thousand part numbers of electronic components in stock for immediately delivery, which may include part number AT28C16E-20PC. The price and lead time for AT28C16E-20PC depending on the quantity required and warehouse location. Contact us and our sales representative will provide you price. We look forward to work with you.

Shopping Process

1

Confirm the product

2

submit the order

3

payment

4

wait for delivery

5

receive the goods

Specifications

Voltage - Supply:	4.5 V ~ 5.5 V
Supplier Device Package:	24-PDIP
Speed:	200ns
Series:	-
Packaging:	Tube
Package / Case:	24-DIP (0.600", 15.24mm)
Operating Temperature:	0°C ~ 70°C (TC)
Memory Type:	Non-Volatile
Memory Size:	16Kb (2K x 8)
Memory Format:	EEPROM
Interface:	Parallel

Related products


AT28C16E-20JC
 IC EEPROM 16KBIT 200NS 32PLCC
[Microchip Technology](#)

RFQ



AT28C16E-15SC
 IC EEPROM 16KBIT 150NS 24SOIC
[Microchip Technology](#)

RFQ



AT28C16E-15SI
 IC EEPROM 16KBIT 150NS 24SOIC
[Microchip Technology](#)

RFQ



AT28C16E-20SC
 IC EEPROM 16KBIT 200NS 24SOIC
[Microchip Technology](#)

RFQ



AT28C16E-25PC
[AT](#)

RFQ



AT28C16E-15SI
 in stock
[ATMEL](#)

RFQ



AT28C17
 in stock
[ATMEL](#)

RFQ



AT28C16E-20PI
 IC EEPROM 16KBIT 200NS 24DIP
[Microchip Technology](#)

RFQ



AT28C16E-20JI
 IC EEPROM 16KBIT 200NS 32PLCC
[Microchip Technology](#)

RFQ



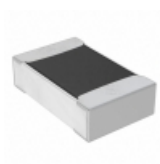
AT28C16E-20SI
 IC EEPROM 16KBIT 200NS 24SOIC
[Microchip Technology](#)

RFQ

Guess You May Looking For


RC0201FR-0716R2L
 RES SMD 16.2 OHM 1% 1/20W 0201
[Yageo](#)

RFQ



RMCF0805FT953K
 RES SMD 953K OHM 1% 1/8W 0805
[Stackpole Electronics Inc.](#)

RFQ



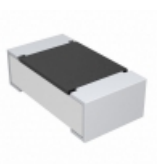
MCR10ERTF1132
 RES SMD 11.3K OHM 1% 1/8W 0805
[Rohm Semiconductor](#)

RFQ



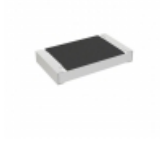
AA0603FR-072K1L
 RES SMD 2.1K OHM 1% 1/10W 0603
[Yageo](#)

RFQ



CRCW06035R90FNTA
 RES SMD 5.9 OHM 1% 1/10W 0603
[Vishay Dale](#)

RFQ



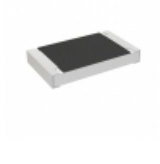
RCS060356K2FKEA
 RES SMD 56.2K OHM 1% 1/4W 0603
[Vishay Dale](#)

RFQ



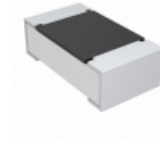
ESR18EZPJ754
 RES SMD 750K OHM 5% 1/3W 1206
[Rohm Semiconductor](#)

RFQ



RCS080543K0FKEA
 RES SMD 43K OHM 1% 0.4W 0805
[Vishay Dale](#)

RFQ



CRCW0603634KDHTAP
 RES SMD 634K OHM 0.5% 1/10W 0603
[Vishay Dale](#)

RFQ



AT0805BRD0712R1L
 RES SMD 12.1 OHM 0.1% 1/8W 0805
[Yageo](#)

RFQ