

## UCC2889NG4



N/A  
 IC OFFLINE CTRLR UVLO 8DIP  
 Lead free / RoHS Compliant  
 Integrated Circuits (ICs)

**Buy Now**

Part No. UCC2889NG4 Is this a common-used part? : Yes  
 Shipped from : HK or Singapore warehouse  
 Same model may have multiple batches, images only for reference.  
 ECAD Models : Contact us to get  
 Email:sales@zeanoit.com

**Out Stock**

**0 pcs**

Minimum:1

Multiples:1

Manufacturer lead time 10 weeks

### Shopping Process



**Confirm the product**



**submit the order**



**payment**



**wait for delivery**



**receive the goods**

### Specifications

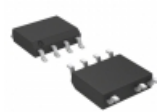
<b>Voltage - Supply (Vcc/Vdd):</b>	6.3 V ~ 9.3 V
<b>Voltage - Start Up:</b>	8.4V
<b>Voltage - Breakdown:</b>	-
<b>Topology:</b>	Flyback
<b>Supplier Device Package:</b>	8-PDIP
<b>Series:</b>	-
<b>Power (Watts):</b>	-
<b>Packaging:</b>	Tube
<b>Package / Case:</b>	8-DIP (0.300", 7.62mm)
<b>Output Isolation:</b>	Non-Isolated
<b>Operating Temperature:</b>	-40°C ~ 85°C (TA)
<b>Mounting Type:</b>	Through Hole
<b>Internal Switch(s):</b>	No
<b>Frequency - Switching:</b>	-
<b>Fault Protection:</b>	Short Circuit
<b>Duty Cycle:</b>	-
<b>Control Features:</b>	-

### Related products



**UCC2889DG4**  
 IC OFFLINE CTRLR UVLO 8SOIC  
[N/A](#)

[RFQ](#)



**UCC28911D**  
 IC OFF-LINE SWITCH PWM 7SOIC  
[N/A](#)

[RFQ](#)



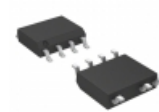
**UCC2889DTRG4**  
 IC OFFLINE CTRLR UVLO 8SOIC  
[N/A](#)

[RFQ](#)



**UCC2889DTR**  
 IC OFFLINE CTRLR UVLO 8SOIC  
[N/A](#)

[RFQ](#)



**UCC28910DR**  
 IC OFF-LINE SWITCH PWM 7SOIC  
[N/A](#)

[RFQ](#)



**UCC2889N**  
 IC OFFLINE CTRLR UVLO 8DIP  
[N/A](#)

[RFQ](#)



**UCC2889D**  
 IC OFFLINE CTRLR UVLO 8SOIC  
[N/A](#)

[RFQ](#)



**UCC28910FBEVM-526**  
 EVAL BOARD PWM SWITCHER  
 UCC28910  
[N/A](#)

[RFQ](#)



**UCC2891**  
 in stock  
[N/A](#)

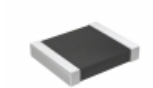
[RFQ](#)



**UCC28910D**  
 IC OFF-LINE SWITCH PWM 7SOIC  
[N/A](#)

[RFQ](#)

### Guess You May Looking For



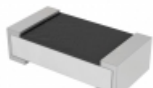
**RT1210FRD07820RL**  
 RES SMD 820 OHM 1% 1/4W 1210  
[Yageo](#)

[RFQ](#)



**AC2512FK-075K76L**  
 RES SMD 5.76K OHM 1% 1W 2512  
[Yageo](#)

[RFQ](#)



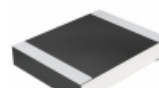
**PT0402FR-070R1L**  
 RES SMD 0.1 OHM 1% 1/16W 0402  
[Yageo](#)

[RFQ](#)



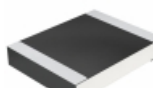
**CRCW1210120RJNEAHP**  
 RES SMD 120 OHM 5% 3/4W 1210  
[Vishay Dale](#)

[RFQ](#)



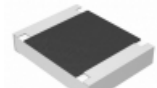
**CRCW12105K36FKEAHP**  
 RES SMD 5.36K OHM 1% 3/4W 1210  
[Vishay Dale](#)

[RFQ](#)



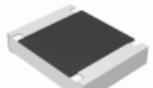
**CRCW121016K2FKEAHP**  
 RES SMD 16.2K OHM 1% 3/4W 1210  
[Vishay Dale](#)

[RFQ](#)



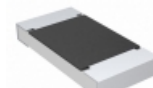
**ERJ-S14F2670U**  
 RES SMD 267 OHM 1% 1/2W 1210  
[Panasonic Electronic Components](#)

[RFQ](#)



**ERJ-S14F7153U**  
 RES SMD 715K OHM 1% 1/2W 1210  
[Panasonic Electronic Components](#)

[RFQ](#)



**CRCW20101K05FKTF**  
 RES SMD 1.05K OHM 1% 3/4W 2010  
[Vishay Dale](#)

[RFQ](#)



**CRGV2512F102K**  
 RES SMD 102K OHM 1% 1W 2512  
[TE Connectivity Passive Product](#)

[RFQ](#)

