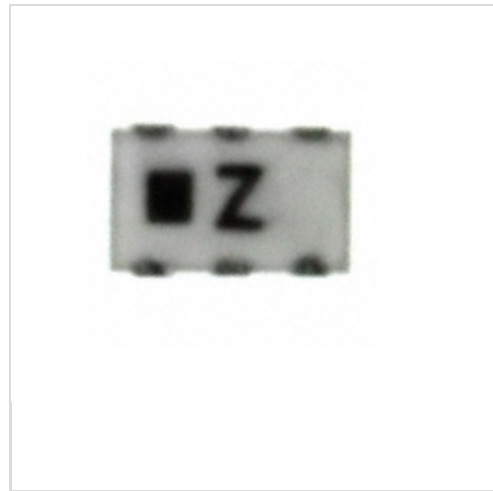


EHF-2BG1800



Panasonic

BALUN 1700-1900 MHZ 50/200 OHM

Lead free / RoHS Compliant

RF/IF and RFID

[EHF-2BG1800.pdf](#)

Buy Now

We can supply Panasonic EHF-2BG1800, use the request quote form to request EHF-2BG1800 price, Panasonic Datasheet PDF and lead time. Zeanoit.com is a professional electronic components distributor. With 3+ Million line items of available electronic components can ship in short lead-time, over 250 thousand part numbers of electronic components in stock for immediately delivery, which may include part number EHF-2BG1800. The price and lead time for EHF-2BG1800 depending on the quantity required, availability and warehouse location.

Shopping Process

1

Confirm the product



2

submit the order



3

payment



4

wait for delivery



5

receive the goods

Specifications

| | |
|---|--------------------|
| Series: | EHF |
| Return Loss (Min): | - |
| Phase Difference: | 180° ±15 |
| Packaging: | Tape & Reel (TR) |
| Package / Case: | 0805 (2012 Metric) |
| Mounting Type: | Surface Mount |
| Insertion Loss (Max): | 1.0dB |
| Impedance - Unbalanced/Balanced: | 50 / 200 Ohm |
| Frequency Range: | 1.7GHz ~ 1.9GHz |

Related products

Panasonic

EHF-2CM0900
COUPLER DIRECTIONAL 900 MHZ
[Panasonic Electronic Components](#)

RFQ



EHF-2BG2450
BALUN 2400-2500 MHZ 50/200 OHM
[Panasonic Electronic Components](#)

RFQ

Panasonic

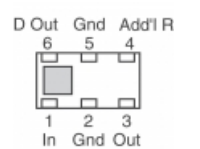
EHF-2BG0920
BALUN 880-960 MHZ 50/200 OHM
[Panasonic Electronic Components](#)

RFQ



EHF-2BE1800
BALUN 1700-1900 MHZ 50/100 OHM
[Panasonic Electronic Components](#)

RFQ



EHF-4CM1747
COUPLER DIRECTIONAL 1747.5 MHZ
[Panasonic Electronic Components](#)

RFQ

Panasonic

EHF-2BE2450
BALUN 2400-2500 MHZ 50/50 OHM
[Panasonic Electronic Components](#)

RFQ



EHF-2BG2060
BALUN 1920-2170 MHZ 50/200 OHM
[Panasonic Electronic Components](#)

RFQ

Panasonic

EHF-2BE2060
BALUN 1920-2170 MHZ 50/100 OHM
[Panasonic Electronic Components](#)

RFQ



EHF-4BE5250
BALUN 5150-5350 MHZ 50/100 OHM
[Panasonic Electronic Components](#)

RFQ

Panasonic

EHF-2BE0920
BALUN 880-960 MHZ 50/100OHM
[Panasonic Electronic Components](#)

RFQ

Guess You May Looking For

SEI
Stackpole Electronics, Inc.
Resistor Product Solutions

RNCF2010BTE768K
RES SMD 768K OHM 0.1% 1/3W 2010
[Stackpole Electronics Inc.](#)

RFQ



RG3216N-6191-D-T5
RES SMD 6.19K OHM 0.5% 1/4W 1206
[Susumu](#)

RFQ

SEI
Stackpole Electronics, Inc.
Resistor Product Solutions

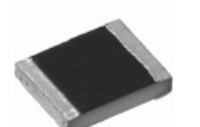
RNCF2010BTE324K
RES SMD 324K OHM 0.1% 1/3W 2010
[Stackpole Electronics Inc.](#)

RFQ



RG3216N-4422-D-T5
RES SMD 44.2K OHM 0.5% 1/4W 1206
[Susumu](#)

RFQ



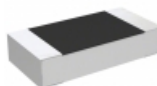
CRCW12103R60JNEAHP
RES SMD 3.6 OHM 5% 3/4W 1210
[Vishay Dale](#)

RFQ

SEI
Stackpole Electronics, Inc.
Resistor Product Solutions

RNCF0805BTT10R0
RES SMD 10 OHM 0.1% 1/8W 0805
[Stackpole Electronics Inc.](#)

RFQ



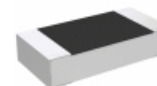
CPF1206B1K18E1
RES SMD 1.18K OHM 0.1% 1/8W 1206
[TE Connectivity Passive Product](#)

RFQ

SEI
Stackpole Electronics, Inc.
Resistor Product Solutions

RNCF2010BTC866K
RES SMD 866K OHM 0.1% 1/3W 2010
[Stackpole Electronics Inc.](#)

RFQ



CPF1206B35R7E1
RES SMD 35.7 OHM 0.1% 1/8W 1206
[TE Connectivity Passive Product](#)

RFQ

SEI
Stackpole Electronics, Inc.
Resistor Product Solutions

RNCF1210BTE20R5
RES SMD 20.5 OHM 0.1% 1/3W 1210
[Stackpole Electronics Inc.](#)

RFQ