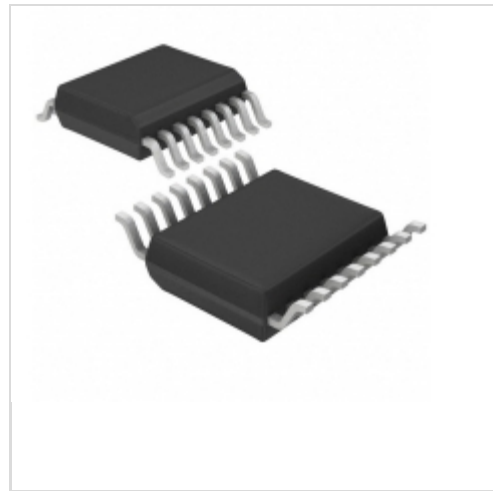


## LTC1642AIGN#TRPBF



[Linear Technology / Analog Devices](#)

IC CONTROLLER HOTSWAP ADJ 16SSOP

Lead free / RoHS Compliant

Integrated Circuits (ICs)

[LTC1642AIGN#TRPBF.pdf](#)

**Buy Now**

**Out Stock**

**0 pcs**

Minimum:1

Multiples:100

Manufacturer lead time 10 weeks

part#LTC1642AIGN#TRPBF is available, see description of LTC1642AIGN#TRPBF as below .

use the request quote form to request LTC1642AIGN#TRPBF price and lead time.

Buy Electronic Components at zeanoit.com .we are an independent distributor of electronic components with extensive inventory in stock.

The price and lead time for LTC1642AIGN#TRPBF depending on the quantity required, availability and warehouse location.Contact us today and our sales team will send you quotation soon.

Email: sales@zeanoit.com

### Shopping Process

**1**

**Confirm the product**

**2**

**submit the order**

**3**

**payment**

**4**

**wait for delivery**

**5**

**receive the goods**

### Specifications

<b>Voltage - Supply:</b>	2.97 V ~ 16.5 V
<b>Type:</b>	Hot Swap Controller
<b>Supplier Device Package:</b>	16-SSOP
<b>Series:</b>	-
<b>Programmable Features:</b>	Auto Retry, Current Limit, Fault Timeout, Latched Fault, UVLO
<b>Packaging:</b>	Tape & Reel (TR)
<b>Package / Case:</b>	16-SSOP (0.154", 3.90mm Width)
<b>Operating Temperature:</b>	-40°C ~ 85°C
<b>Number of Channels:</b>	1
<b>Mounting Type:</b>	Surface Mount
<b>Internal Switch(s):</b>	No
<b>Features:</b>	-
<b>Feature Pins:</b>	BRK TMR, CRWBR, /FAULT, FB, ON, /RESET, RST TMR
<b>Current - Supply:</b>	1.25mA
<b>Current - Output (Max):</b>	-
<b>Applications:</b>	InfiniBand™

### Related products



**LTC1642CGN#TRPBF**

IC CONTROLLER HOTSWAP ADJ 16SSOP  
[Linear Technology](#)

RFQ



**LTC1642CGN**

[LINEAR](#)

RFQ



**LTC1642ACGN#TRPBF**

IC CONTROLLER HOTSWAP ADJ 16SSOP  
[Linear Technology](#)

RFQ



**LTC1642CGN#PBF**

IC CONTROLLER HOTSWAP ADJ 16SSOP  
[Linear Technology](#)

RFQ



**LTC1642CGN#**

[LT](#)

RFQ



**LTC1642AIGN#PBF**

IC CONTROLLER HOTSWAP ADJ 16SSOP  
[Linear Technology](#)

RFQ



**LTC1642IGN**

[LINEAR](#)

RFQ



**LTC1642ACGN#PBF**

IC CONTROLLER HOTSWAP ADJ 16SSOP  
[Linear Technology](#)

RFQ



**LTC1640LCS8**

[LINEAR](#)

RFQ

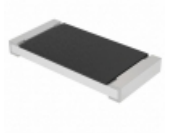


**LTC1642ACGN**

[LINEAR](#)

RFQ

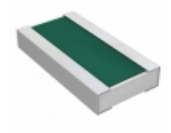
### Guess You May Looking For



**CRCW251243R0FKEGHP**

RES SMD 43 OHM 1% 1.5W 2512  
[Vishay Dale](#)

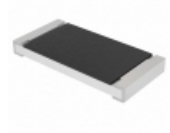
RFQ



**PRG3216P-2202-B-T5**

RES SMD 22K OHM 1W 1206 WIDE  
[Susumu](#)

RFQ



**CRCW25122R20FKEGHP**

RES SMD 2.2 OHM 1% 1.5W 2512  
[Vishay Dale](#)

RFQ



**ERA-2HRB2320X**

RES SMD 232 OHM 0.1% 1/16W 0402  
[Panasonic Electronic Components](#)

RFQ



**ERA-2HRB7501X**

RES SMD 7.5K OHM 0.1% 1/16W 0402  
[Panasonic Electronic Components](#)

RFQ



**ERA-2HRB1182X**

RES SMD 11.8KOHM 0.1% 1/16W 0402  
[Panasonic Electronic Components](#)

RFQ



**ERA-2HRB2670X**

RES SMD 267 OHM 0.1% 1/16W 0402  
[Panasonic Electronic Components](#)

RFQ



**RT0805BRB07300RL**

RES SMD 300 OHM 0.1% 1/8W 0805  
[Yageo](#)

RFQ



**HRG3216Q-22R1-D-T5**

RES SMD 22.1 OHM 0.5% 1W 1206  
[Susumu](#)

RFQ



**RG1608P-3240-P-T1**

RES SMD 324 OHM 0.02% 1/10W 0603  
[Susumu](#)

RFQ