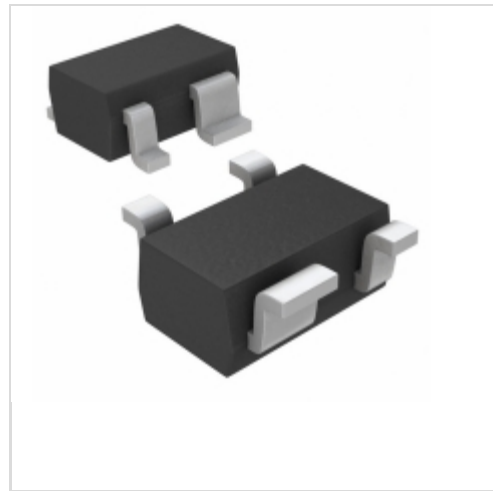


MAX6388XS42D1-T



Maxim Integrated

IC MPU/RESET CIRC 4.20V SC70-4
Contains lead / RoHS non-compliant
Integrated Circuits (ICs)

- [1.MAX6388XS42D1-T.pdf](#)
- [2.MAX6388XS42D1-T.pdf](#)

Buy Now

Images are for reference only.

See Product Specifications for product details.

If you are interested to buy MAX6388XS42D1-T, Just Email us.

Sales@zeanoit.com

our sales team will reply you within 24 hours

Shopping Process



Confirm the product



submit the order



payment



wait for delivery



receive the goods

Specifications

Voltage - Threshold:	4.2V, Adj
Type:	Multi-Voltage Supervisor
Supplier Device Package:	SC-70-4
Series:	-
Reset Timeout:	1 ms Minimum
Reset:	Active High
Packaging:	Tape & Reel (TR)
Package / Case:	SC-82A, SOT-343
Output:	Push-Pull, Totem Pole
Operating Temperature:	-40°C ~ 125°C (TA)
Number of Voltages Monitored:	2
Mounting Type:	Surface Mount

Related products



MAX6388XS42D2-T
IC MPU/RESET CIRC 4.20V SC70-4
[Maxim Integrated](#)

RFQ



MAX6388XS41D6-T
in stock
[MAXIM](#)

RFQ



MAX6388XS42D2-T
in stock
[MAXIM](#)

RFQ



MAX6388XS42D3-T
in stock
[MAXIM](#)

RFQ



MAX6388XS41D7-T
IC MPU/RESET CIRC 4.10V SC70-4
[Maxim Integrated](#)

RFQ



MAX6388XS42D3-T
IC MPU/RESET CIRC 4.20V SC70-4
[Maxim Integrated](#)

RFQ



MAX6388XS42D4-T
IC MPU/RESET CIRC 4.20V SC70-4
[Maxim Integrated](#)

RFQ



MAX6388XS41D6-T
IC MPU/RESET CIRC 4.10V SC70-4
[Maxim Integrated](#)

RFQ



MAX6388XS41D7-T
in stock
[MAXIM](#)

RFQ



MAX6388XS42D1-T
in stock
[MAXIM](#)

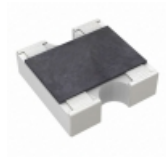
RFQ

Guess You May Looking For



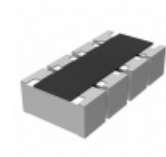
MCR006YZPF4303
RES SMD 430K OHM 1% 1/20W 0201
[Rohm Semiconductor](#)

RFQ



YC162-FR-07475KL
RES ARRAY 2 RES 475K OHM 0606
[Yageo](#)

RFQ



YC124-FR-0730R1L
RES ARRAY 4 RES 30.1 OHM 0804
[Yageo](#)

RFQ



AF122-FR-07309KL
RES ARRAY 2 RES 309K OHM 0404
[Yageo](#)

RFQ



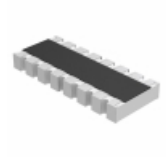
SOMC1603680RGEA
RES ARRAY 8 RES 680 OHM 16SOIC
[Vishay Dale](#)

RFQ



767161152G
RES ARRAY 15 RES 1.5K OHM 16SOIC
[CTS Resistor Products](#)

RFQ



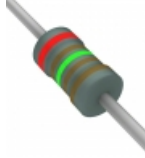
MNR18E0APJ470
RES ARRAY 8 RES 47 OHM 1506
[Rohm Semiconductor](#)

RFQ



PAC100005600FA1000
RES 560 OHM 1W 1% AXIAL
[Vishay BC Components](#)

RFQ



RNF14FTE2K15
RES 2.15K OHM 1/4W 1% AXIAL
[Stackpole Electronics Inc.](#)

RFQ



RN55C56R0FB14
RES 56 OHM 1/8W 1% AXIAL
[Vishay Dale](#)

RFQ