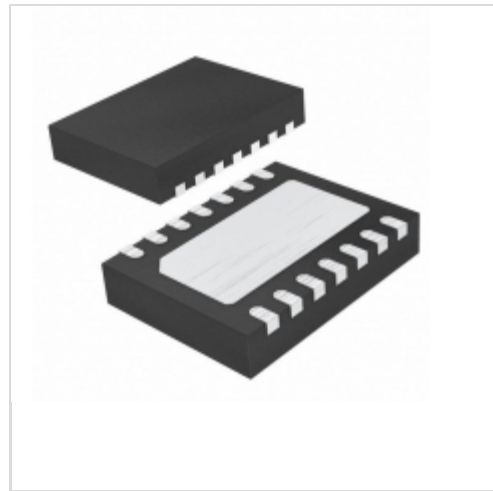


**LTC4355IDE#PBF**



Linear Technology / Analog Devices

IC OR CTRLR SRC SELECT 14DFN

Lead free / RoHS Compliant

Integrated Circuits (ICs)

[LTC4355IDE#PBF.pdf](#)

**Buy Now**

**In Stock**

**521 pcs**

Minimum:1

Multiples:100

Manufacturer lead time 10 weeks

**PRICE**

1 pcs	\$6.03
25 pcs	\$4.30
100 pcs	\$3.50

part#LTC4355IDE#PBF is available, see description of LTC4355IDE#PBF as below .

use the request quote form to request LTC4355IDE#PBF price and lead time.

Buy Electronic Components at zeanoit.com .we are an independent distributor of electronic components with extensive inventory in stock.

The price and lead time for LTC4355IDE#PBF depending on the quantity required, availability and warehouse location.Contact us today and our sales team will send you quotation soon.

Email: sales@zeanoit.com

Shopping Process

**1**

**Confirm the product**

**2**

**submit the order**

**3**

**payment**

**4**

**wait for delivery**

**5**

**receive the goods**

Specifications

<b>Voltage - Supply:</b>	48V, -48V
<b>Type:</b>	N+1 ORing Controller
<b>Supplier Device Package:</b>	14-DFN (4x3)
<b>Series:</b>	-
<b>Ratio - Input:Output:</b>	2:1
<b>Packaging:</b>	Tube
<b>Package / Case:</b>	14-WDFDN Exposed Pad
<b>Operating Temperature:</b>	-40°C ~ 85°C
<b>Mounting Type:</b>	Surface Mount
<b>Internal Switch(s):</b>	No
<b>FET Type:</b>	N-Channel
<b>Delay Time - OFF:</b>	300ns
<b>Current - Supply:</b>	2mA
<b>Current - Output (Max):</b>	-
<b>Applications:</b>	-48V Dist Power Systems, AdvancedTCA® Systems

Related products



**LTC4355CS#TRPBF**  
IC OR CTRLR SRC SELECT 16SOIC  
[Linear Technology](#)

RFQ



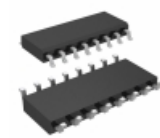
**LTC4355HMS#TRPBF**  
IC OR CTRLR SRC SELECT 16MSOP  
[Linear Technology](#)

RFQ



**LTC4355IMS#PBF**  
IC OR CTRLR SRC SELECT 16MSOP  
[Linear Technology](#)

RFQ



**LTC4355CS#PBF**  
IC OR CTRLR SRC SELECT 16SOIC  
[Linear Technology](#)

RFQ



**LTC4355IS**  
LT

RFQ



**LTC4355EMS#PBF**  
in stock  
[LINEAR](#)

RFQ



**LTC4355IMS#TRPBF**  
IC OR CTRLR SRC SELECT 16MSOP  
[Linear Technology](#)

RFQ



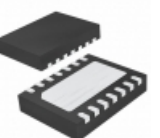
**LTC4355IS#PBF**  
IC OR CTRLR SRC SELECT 16SOIC  
[Linear Technology](#)

RFQ



**LTC4355HMS#PBF**  
IC OR CTRLR SRC SELECT 16MSOP  
[Linear Technology](#)

RFQ



**LTC4355IDE#TRPBF**  
IC OR CTRLR SRC SELECT 14DFN  
[Linear Technology](#)

RFQ

Guess You May Looking For



**PWR163S-25-R033JE**  
RES SMD 0.033 OHM 5% 25W DPAK  
[Bourns Inc.](#)

RFQ



**S1-0R024J8**  
RES SMD 0.024 OHM 5% 1/2W 1913  
[Riedon](#)

RFQ



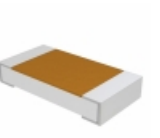
**S1-0R05J1**  
RES SMD 0.05 OHM 5% 1/2W 1913  
[Riedon](#)

RFQ



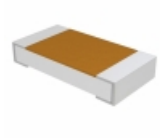
**HVS0805-15MJ8**  
RES SMD 15M OHM 5% 1/8W 0805  
[Riedon](#)

RFQ



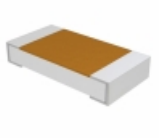
**TNPU12063K65BZEN00**  
RES SMD 3.65K OHM 0.1% 1/4W 1206  
[Vishay Dale](#)

RFQ



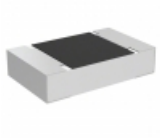
**TNPU12063K92BZEN00**  
RES SMD 3.92K OHM 0.1% 1/4W 1206  
[Vishay Dale](#)

RFQ



**TNPU120615K0BZEN00**  
RES SMD 15K OHM 0.1% 1/4W 1206  
[Vishay Dale](#)

RFQ



**TNPU0805487RAZEN00**  
RES SMD 487 OHM 0.05% 1/8W 0805  
[Vishay Dale](#)

RFQ



**RG2012V-131-P-T1**  
RES SMD 130 OHM 0.02% 1/8W 0805  
[Susumu](#)

RFQ



**RG2012V-622-P-T1**  
RES SMD 6.2K OHM 0.02% 1/8W 0805  
[Susumu](#)

RFQ