

MAX6463XR22+T



Maxim Integrated

IC VOLT DETECTOR LP SC70-3
Lead free / RoHS Compliant
Integrated Circuits (ICs)

- [1.MAX6463XR22+T.pdf](#)
- [2.MAX6463XR22+T.pdf](#)

Buy Now

In Stock
980 pcs
Minimum:1
Multiples:100
Manufacturer lead time 10 weeks

PRICE	
1 pcs	\$2.95
10 pcs	\$2.78
25 pcs	\$2.22
50 pcs	\$2.11
100 pcs	\$1.95
250 pcs	\$1.85
500 pcs	\$1.39

Images are for reference only.

See Product Specifications for product details.

If you are interested to buy MAX6463XR22+T,Just Email us.

Sales@zeanoit.com

our sales team will reply you within 24 hours

Shopping Process

1

Confirm the product

2

submit the order

3

payment

4

wait for delivery

5

receive the goods

Specifications

Voltage - Threshold:	2.2V
Type:	Simple Reset/Power-On Reset
Supplier Device Package:	SC-70-3
Series:	-
Reset Timeout:	14 μ s Typical Propagation Delay
Reset:	Active Low
Packaging:	Cut Tape (CT)
Package / Case:	SC-70, SOT-323
Output:	Open Drain or Open Collector
Operating Temperature:	-40°C ~ 125°C (TA)
Number of Voltages Monitored:	1
Mounting Type:	Surface Mount

Related products



MAX6463XR29+
IC VOLT DETECTOR LP SC70-3
[Maxim Integrated](#)

RFQ



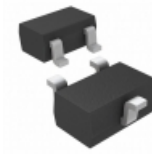
MAX6463XR22-T
in stock
[MAXIM](#)

RFQ



MAX6463XR26-T
in stock
[MAXIM](#)

RFQ



MAX6463XR16+T
IC VOLT DETECTOR LP SC70-3
[Maxim Integrated](#)

RFQ



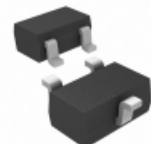
MAX6463XR17+T
IC VOLT DETECTOR LP SC70-3
[Maxim Integrated](#)

RFQ



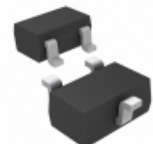
MAX6463XR16-T
in stock
[MAXIM](#)

RFQ



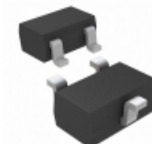
MAX6463XR26+T
IC VOLT DETECTOR LP SC70-3
[Maxim Integrated](#)

RFQ



MAX6463XR21+T
IC VOLT DETECTOR LP SC70-3
[Maxim Integrated](#)

RFQ



MAX6463XR18+T
IC VOLT DETECTOR LP SC70-3
[Maxim Integrated](#)

RFQ



MAX6463XR29+T
IC VOLT DETECTOR LP SC70-3
[Maxim Integrated](#)

RFQ

Guess You May Looking For



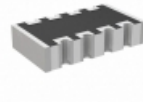
9T06031A6491BBHFT
RES SMD 6.49KOHM 0.1% 1/10W 0603
[Yageo](#)

RFQ



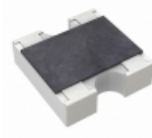
RG1005P-3831-C-T10
RES SMD 3.83K OHM 1/16W 0402
[Susumu](#)

RFQ



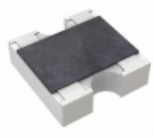
TC164-FR-07953RL
RES ARRAY 4 RES 953 OHM 1206
[Yageo](#)

RFQ



YC162-FR-07475RL
RES ARRAY 2 RES 475 OHM 0606
[Yageo](#)

RFQ



YC162-FR-07619KL
RES ARRAY 2 RES 619K OHM 0606
[Yageo](#)

RFQ



RSMF2JTR750
RES 0.75 OHM 2W 5% AXIAL
[Stackpole Electronics Inc.](#)

RFQ



FCB422RJ
RES 22.0 OHM 4W 5% RADIAL
[TE Connectivity Passive Product](#)

RFQ



RNF14FAC100K
RES 100K OHM 1/4W 1% AXIAL
[Stackpole Electronics Inc.](#)

RFQ



RN55D3651FRE6
RES 3.65K OHM 1/8W 1% AXIAL
[Vishay Dale](#)

RFQ



CMF55255K00DHRE
RES 255K OHM 1/2W .5% AXIAL
[Vishay Dale](#)

RFQ