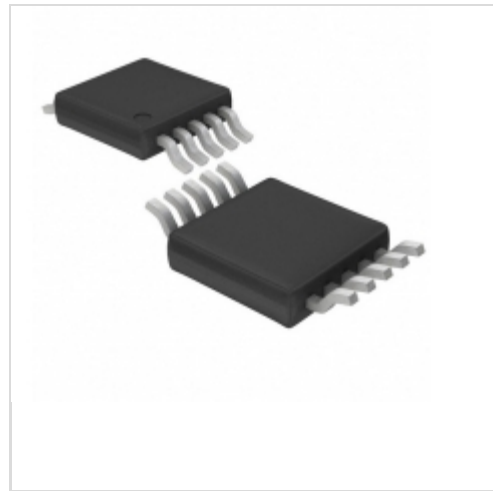


LTC1758-2EMS#PBF



[Linear Technology / Analog Devices](#)

IC RF PWR CNTRL 2GHZ DUAL 10MSOP

Lead free / RoHS Compliant

RF/IF and RFID

[LTC1758-2EMS#PBF.pdf](#)

Buy Now

We can supply Linear Technology / Analog Devices LTC1758-2EMS#PBF, use the request quote form to request LTC1758-2EMS#PBF price, Linear Technology / Analog Devices Datasheet PDF and lead time. Zeanoit.com is a professional electronic components distributor. With 3+ Million line items of available electronic components can ship in short lead-time, over 250 thousand part numbers of electronic components in stock for immediately delivery, which may include part number LTC1758-2EMS#PBF. The price and lead time for LTC1758-2EMS#PBF depending on the quantity required, availability and warehouse location.

Out Stock

0 pcs

Minimum:1

Multiples:100

Manufacturer lead time 10 weeks

Shopping Process

1

Confirm the product

2

submit the order

3

payment

4

wait for delivery

5

receive the goods

Specifications

Supplier Device Package:	10-MSOP
Series:	-
RF Type:	Cellular, GSM, GPRS, PCS, Wireless Modem, TDMA
Packaging:	Tube
Package / Case:	10-TFSOP, 10-MSOP (0.118", 3.00mm Width)
Frequency:	850MHz ~ 2GHz
Features:	Dual Output

Related products



LTC1757A-2EMS(LTPM)

[LT](#)

RFQ



LTC1758-2EMS#TR

[LINEAR](#)

RFQ



LTC1758-1EMS8#PBF

IC RF PWR CNTRL 2GHZ SGL 8MSOP

[Linear Technology](#)

RFQ



LTC1758-1EMS8#TRPBF

IC RF PWR CNTRL 2GHZ SGL 8MSOP

[Linear Technology](#)

RFQ



LTC1759CG

[LT](#)

RFQ



LTC1758-2EMS#TRPBF

IC RF PWR CNTRL 2GHZ DUAL 10MSOP

[Linear Technology](#)

RFQ



LTC1759CG#PBF

IC SMART BATTERY CHARGER 36SSOP

[Linear Technology](#)

RFQ



LTC1759CG#TRPBF

IC SMART BATTERY CHARGER 36SSOP

[Linear Technology](#)

RFQ



LTC1758-2EMS

[LT](#)

RFQ



LTC1758

[QFN24](#)

RFQ

Guess You May Looking For



NSM6227FT64R9

RES SMD 64.9 OHM 1% 3W 6227

[Stackpole Electronics Inc.](#)

RFQ



S4-57R6F8

RES SMD 57.6 OHM 1% 2W 4525

[Riedon](#)

RFQ



WSLT59313L000FEB

RES SMD 0.003 OHM 1% 5W 5931

[Vishay Dale](#)

RFQ



RG1608V-5900-W-T1

RES SMD 590 OHM 0.05% 1/10W 0603

[Susumu](#)

RFQ

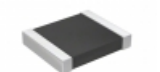


S3-0R02F2

RES SMD 0.02 OHM 1% 3W 6327

[Riedon](#)

RFQ

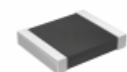


RT1210WRD07178RL

RES SMD 178 OHM 0.05% 1/4W 1210

[Yageo](#)

RFQ



RT1210WRD07931KL

RES SMD 931K OHM 0.05% 1/4W 1210

[Yageo](#)

RFQ

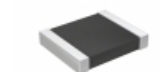


RG1005V-2941-W-T5

RES SMD 2.94K OHM 1/16W 0402

[Susumu](#)

RFQ

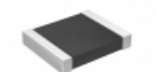


RT1210WRD07300KL

RES SMD 300K OHM 0.05% 1/4W 1210

[Yageo](#)

RFQ



RT1210WRD07332KL

RES SMD 332K OHM 0.05% 1/4W 1210

[Yageo](#)

RFQ