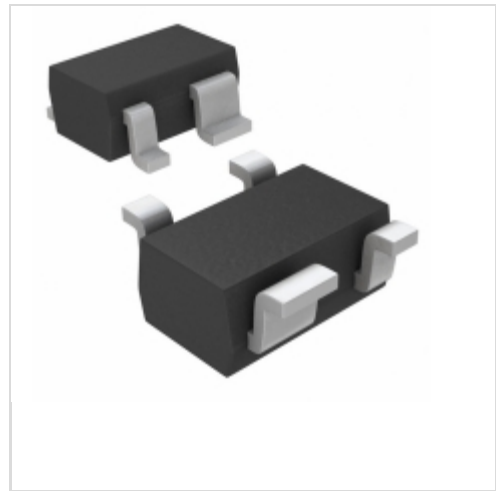


MAX6384XS29D3+T



Maxim Integrated

IC MPU/RESET CIRC 2.93V SC70-4

Lead free / RoHS Compliant

Integrated Circuits (ICs)

[1.MAX6384XS29D3+T.pdf](#)

[2.MAX6384XS29D3+T.pdf](#)

Buy Now

Out Stock

0 pcs

Minimum:1

Multiples:100

Manufacturer lead time 10 weeks

PRICE

1 pcs	\$5.89
10 pcs	\$5.56
25 pcs	\$4.45
50 pcs	\$4.22
100 pcs	\$3.89
250 pcs	\$3.69
500 pcs	\$2.78

We can supply Maxim Integrated MAX6384XS29D3+T, use the request quote form to request MAX6384XS29D3+T price, Maxim Integrated Datasheet PDF and lead time. Zeanoit.com is a professional electronic components distributor. With 3+ Million line items of available electronic components can ship in short lead-time, over 250 thousand part numbers of electronic components in stock for immediately delivery, which may include part number MAX6384XS29D3+T. The price and lead time for MAX6384XS29D3+T depending on the quantity required, availability and warehouse location.

Shopping Process

1

Confirm the product

2

submit the order

3

payment

4

wait for delivery

5

receive the goods

Specifications

Voltage - Threshold:	2.93V
Type:	Simple Reset/Power-On Reset
Supplier Device Package:	SC-70-4
Series:	-
Reset Timeout:	140 ms Minimum
Reset:	Active Low
Packaging:	Tape & Reel (TR)
Package / Case:	SC-82A, SOT-343
Output:	Push-Pull, Totem Pole
Operating Temperature:	-40°C ~ 125°C (TA)
Number of Voltages Monitored:	1
Mounting Type:	Surface Mount

Related products

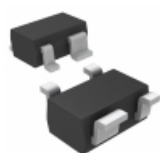


MAX6384XS29D4-T

in stock

[MAXIM](#)

RFQ



MAX6384XS29D2-T

IC MPU/RESET CIRC 2.93V SC70-4

[Maxim Integrated](#)

RFQ



MAX6384XS29D5-T

in stock

[MAXIM](#)

RFQ



MAX6384XS29D4+T

IC MPU/RESET CIRC 2.93V SC70-4

[Maxim Integrated](#)

RFQ



MAX6384XS29D3

[MAXIM](#)

RFQ



MAX6384XS29D3-T

in stock

[MAXIM](#)

RFQ



MAX6384XS29D6-T

in stock

[MAXIM](#)

RFQ



MAX6384XS29D1-T

in stock

[MAXIM](#)

RFQ



MAX6384XS29D2-T

in stock

[MAXIM](#)

RFQ



MAX6384XS29D1+T

IC MPU/RESET CIRC 2.93V SC70-4

[Maxim Integrated](#)

RFQ

Guess You May Looking For



RG1608P-274-C-T5

RES SMD 270KOHM 0.25% 1/10W 0603

[Susumu](#)

RFQ



RG1608P-63R4-C-T5

RES SMD 63.4OHM 0.25% 1/10W 0603

[Susumu](#)

RFQ



RG1608P-683-B-T1

RES SMD 68K OHM 0.1% 1/10W 0603

[Susumu](#)

RFQ



LRMAM2512-R005FT4

RES SMD 0.005 OHM 1% 2W 2512

[TT Electronics/Welwyn](#)

RFQ

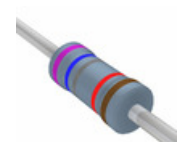


UB3C-180RF1

RES 180 OHM 3W 1% AXIAL

[Riedon](#)

RFQ

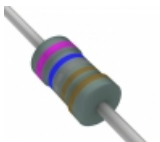


MFR-25FRF52-76K8

RES 76.8K OHM 1/4W 1% AXIAL

[Yageo](#)

RFQ

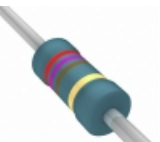


RNF18FTD7K68

RES 7.68K OHM 1/8W 1% AXIAL

[Stackpole Electronics Inc.](#)

RFQ



SFR2500002700JA500

RES 270 OHM 0.4W 5% AXIAL

[Vishay BC Components](#)

RFQ



RN55D3752FR36

RES 37.5K OHM 1/8W 1% AXIAL

[Vishay Dale](#)

RFQ



RN60C1180FRE6

RES 118 OHM 1/4W 1% AXIAL

[Vishay Dale](#)

RFQ