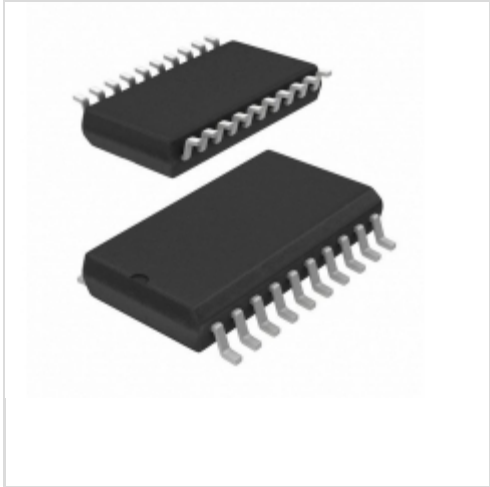



IRS21956SPBF



International Rectifier (Infineon Technologies)

IC DVR HI SIDE/DUAL LOW 20-SOIC
Lead free / RoHS Compliant
Integrated Circuits (ICs)

 [IRS21956SPBF.pdf](#)

 Buy Now

We can supply International Rectifier (Infineon Technologies) IRS21956SPBF, use the request quote form to request IRS21956SPBF pirce, International Rectifier (Infineon Technologies) Datasheet PDF and lead time.Zeanoit.com is a professional electronic components distributor. With 3+ Million line items of available electronic components can ship in short lead-time, over 250 thousand part numbers of electronic components in stock for immediately delivery, which may include part number IRS21956SPBF.The price and lead time for IRS21956SPBF depending on the quantity required, availability and warehouse location.

Shopping Process

1

Confirm the product



2

submit the order



3

payment



4

wait for delivery



5

receive the goods

Specifications

Voltage - Supply:	10 V ~ 20 V
Supplier Device Package:	20-SOIC
Series:	-
Rise / Fall Time (Typ):	25ns, 15ns
Packaging:	Tube
Package / Case:	20-SOIC (0.295", 7.50mm Width)
Operating Temperature:	-55°C ~ 150°C (TJ)
Number of Drivers:	2
Mounting Type:	Surface Mount
Logic Voltage - VIL, VIH:	0.8V, 3.5V
Input Type:	Non-Inverting
High Side Voltage - Max (Bootstrap):	600V
Gate Type:	IGBT, N-Channel MOSFET
Driven Configuration:	Half-Bridge
Current - Peak Output (Source, Sink):	500mA, 500mA
Channel Type:	Independent

Related products



IRS21953SPBF

IC DVR HISIDE DUAL LOSIDE 16SOIC
[Infineon Technologies](#)

RFQ



IRS21962STRPBF.

[IR](#)

RFQ



IRS21962STRPBF

IC DVR HI SIDE DUAL 600V 16SOIC
[Infineon Technologies](#)

RFQ



IRS21956STRPBF

IC DVR HI/LOW SIDE 600V 20SOIC
[Infineon Technologies](#)

RFQ



IRS21952STRPBF

IC DRIVER HI/LO SIDE DUAL 16SOIC
[Infineon Technologies](#)

RFQ



IRS21962SPBF

IC DVR HI SIDE DUAL 600V 16-SOIC
[Infineon Technologies](#)

RFQ



IRS21952STRPBF.

[IR](#)

RFQ



IRS21953STRPBF

IC DRIVER HI/LO SIDE DUAL 16SOIC
[Infineon Technologies](#)

RFQ



IRS21953S

in stock
[IR](#)

RFQ



IRS2301SPBF

IC DVR HI/LOW SIDE 600V 8-SOIC
[Infineon Technologies](#)

RFQ

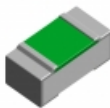
Guess You May Looking For



RG3216N-3741-D-T5

RES SMD 3.74K OHM 0.5% 1/4W 1206
[Susumu](#)

RFQ



ERA-2HRC7501X

RES SMD 7.5KOHM 0.25% 1/16W 0402
[Panasonic Electronic Components](#)

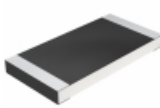
RFQ



RG1608P-273-W-T5

RES SMD 27K OHM 0.05% 1/10W 0603
[Susumu](#)

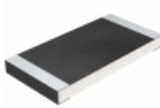
RFQ



CRCW2512240RFKEH

RES SMD 240 OHM 1% 1W 2512
[Vishay Dale](#)

RFQ



CRCW251226R7FKEH

RES SMD 26.7 OHM 1% 1W 2512
[Vishay Dale](#)

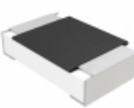
RFQ



RG2012P-304-W-T5

RES SMD 300K OHM 0.05% 1/8W 0805
[Susumu](#)

RFQ



MCU08050D3651BP100

RES SMD 3.65K OHM 0.1% 1/8W 0805
[Vishay Beyschlag](#)

RFQ



RG1608P-9312-W-T1

RES SMD 93.1K OHM 1/10W 0603
[Susumu](#)

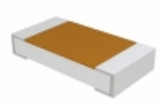
RFQ



ERJ-B1BJ1R6U

RES SMD 1.6 OHM 2W 2010 WIDE
[Panasonic Electronic Components](#)

RFQ



TNPW1206560RBETA

RES SMD 560 OHM 0.1% 1/4W 1206
[Vishay Dale](#)

RFQ