

**INA139QPWRG4Q1**


N/A  
 IC CURRENT SHUNT MONITOR 8TSSOP  
 Lead free / RoHS Compliant  
 Integrated Circuits (ICs)

**Buy Now**

**Out Stock**
**0 pcs**

Minimum:1

Multiples:1

Manufacturer lead time 10 weeks

parts#INA139QPWRG4Q1 is available, see description of INA139QPWRG4Q1 as below

use the request quote form to request INA139QPWRG4Q1 price and lead time.  
 Buy Electronic Components at zeanoit.com .we are an independent distributor of electronic components with extensive inventory in stock.

The price and lead time for INA139QPWRG4Q1 depend on the quantity required, availability and warehouse location.Contact us today and our sales team will send you quotation soon.

Email: sales@zeanoit.com

## Shopping Process

**1**
**Confirm the product**
**2**
**submit the order**
**3**
**payment**
**4**
**wait for delivery**
**5**
**receive the goods**

## Specifications

<b>Voltage - Input:</b>	2.7 V ~ 40 V
<b>Supplier Device Package:</b>	8-TSSOP
<b>Series:</b>	Automotive, AEC-Q100
<b>Sensing Method:</b>	High-Side
<b>Packaging:</b>	Tape & Reel (TR)
<b>Package / Case:</b>	8-TSSOP (0.173", 4.40mm Width)
<b>Operating Temperature:</b>	-40°C ~ 125°C
<b>Mounting Type:</b>	Surface Mount
<b>Function:</b>	Current Monitor
<b>Current - Output:</b>	-
<b>Accuracy:</b>	±0.5%

## Related products


**INA139NA/250**

IC CURRENT MONITOR 0.5% SOT23-5  
[N/A](#)

RFQ


**INA141U**

IC OPAMP INSTR 1MHZ 8SOIC  
[N/A](#)

RFQ


**INA139NA/250G4**

IC CURRENT MONITOR 0.5% SOT23-5  
[N/A](#)

RFQ


**INA141P**
[TI](#)

RFQ


**INA139NA/3KG4**

IC CURRENT MONITOR 0.5% SOT23-5  
[N/A](#)

RFQ


**INA139NA/3K**

IC CURRENT MONITOR 0.5% SOT23-5  
[N/A](#)

RFQ


**INA141U/2K5**

IC OPAMP INSTR 1MHZ 8SOIC  
[N/A](#)

RFQ


**INA141PA**
[TI](#)

RFQ


**INA139QPWRQ1**

IC CURRENT MONITOR 0.5% 8TSSOP  
[N/A](#)

RFQ


**INA139QPW**

in stock  
[N/A](#)

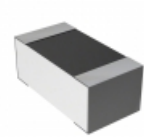
RFQ

## Guess You May Looking For


**RT0805CRB0711R8L**

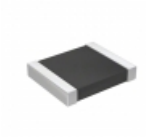
RES SMD 11.8 OHM 0.25% 1/8W 0805  
[Yageo](#)

RFQ


**CPF0603B59RE1**

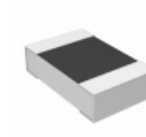
RES SMD 59 OHM 0.1% 1/16W 0603  
[TE Connectivity Passive Product](#)

RFQ


**RT1210BRD07340KL**

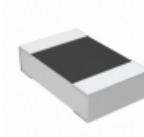
RES SMD 340K OHM 0.1% 1/4W 1210  
[Yageo](#)

RFQ


**CPF0805B6K65E1**

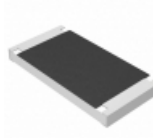
RES SMD 6.65KOHM 0.1% 1/10W 0805  
[TE Connectivity Passive Product](#)

RFQ


**CPF0805B59RE1**

RES SMD 59 OHM 0.1% 1/10W 0805  
[TE Connectivity Passive Product](#)

RFQ


**ERJ-S1TF6043U**

RES SMD 604K OHM 1% 1W 2512  
[Panasonic Electronic Components](#)

RFQ


**AT1206CRD0726R1L**

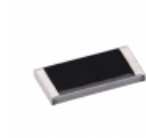
RES SMD 26.1 OHM 0.25% 1/4W 1206  
[Yageo](#)

RFQ


**AT1206CRD0782KL**

RES SMD 82K OHM 0.25% 1/4W 1206  
[Yageo](#)

RFQ


**CPF-A-0603B14KE1**

RES SMD 14K OHM 0.1% 1/16W 0603  
[TE Connectivity Passive Product](#)

RFQ


**RT1206CRC0738K3L**

RES SMD 38.3KOHM 0.25% 1/4W 1206  
[Yageo](#)

RFQ