

CY7C1339G-133AXIT



Cypress Semiconductor

IC SRAM 4MBIT 133MHZ 100LQFP
Lead free / RoHS Compliant
Integrated Circuits (ICs)

[CY7C1339G-133AXIT.pdf](#)

Buy Now

Images are for reference only.

See Product Specifications for product details.

If you are interested to buy CY7C1339G-133AXIT,Just Email us.

Sales@zeanoit.com

our sales team will reply you within 24 hours

Shopping Process

1

Confirm the product

2

submit the order

3

payment

4

wait for delivery

5

receive the goods

Specifications

Voltage - Supply:	3.15 V ~ 3.6 V
Supplier Device Package:	100-TQFP (14x20)
Speed:	133MHz
Series:	-
Packaging:	Tape & Reel (TR)
Package / Case:	100-LQFP
Operating Temperature:	-40°C ~ 85°C (TA)
Memory Type:	Volatile
Memory Size:	4Mb (128K x 32)
Memory Format:	SRAM
Interface:	Parallel

Related products



CY7C1339G-133AXI
IC SRAM 4MBIT 133MHZ 100TQFP
[Cypress Semiconductor Corp](#)

RFQ



CY7C1339G-133AXE
IC SRAM 4MBIT 133MHZ 100LQFP
[Cypress Semiconductor Corp](#)

RFQ



CY7C1339G-133AXET
IC SRAM 4MBIT 133MHZ 100LQFP
[Cypress Semiconductor Corp](#)

RFQ



CY7C1339G-133BGI
in stock
[CYPRESS](#)

RFQ



CY7C1339G-133BGC
in stock
[CYPRESS](#)

RFQ



CY7C1339G-133AXCT
IC SRAM 4MBIT 133MHZ 100TQFP
[Cypress Semiconductor Corp](#)

RFQ



CY7C1339G-133AXC
IC SRAM 4MBIT 133MHZ 100TQFP
[Cypress Semiconductor Corp](#)

RFQ



CY7C1339G-133BGXC
in stock
[CYPRESS](#)

RFQ



CY7C1339G-166AXC
in stock
[CYPRESS](#)

RFQ



CY7C1339G-133BGXI
in stock
[CYPRESS](#)

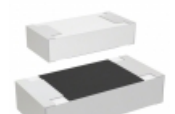
RFQ

Guess You May Looking For



RG2012P-2552-B-T5
RES SMD 25.5K OHM 0.1% 1/8W 0805
[Susumu](#)

RFQ



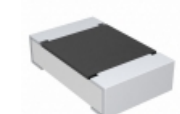
CR1206-FX-3601GLF
RES SMD 3.6K OHM 1% 1/4W 1206
[Bourns Inc.](#)

RFQ



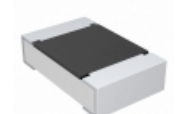
CR0805-FX-2610ELF
RES SMD 261 OHM 1% 1/8W 0805
[Bourns Inc.](#)

RFQ



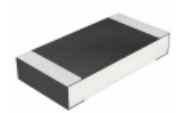
CRCW080543R0FKEB
RES SMD 43 OHM 1% 1/8W 0805
[Vishay Dale](#)

RFQ



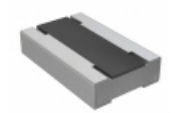
CRCW08052K55FKEB
RES SMD 2.55K OHM 1% 1/8W 0805
[Vishay Dale](#)

RFQ



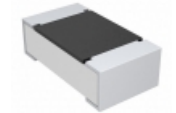
CRCW12064K22FKEB
RES SMD 4.22K OHM 1% 1/4W 1206
[Vishay Dale](#)

RFQ



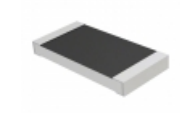
RCL040636R0FKEA
RES SMD 36 OHM 1/4W 0604 WIDE
[Vishay Dale](#)

RFQ



CRCW060338R3FKEAHP
RES SMD 38.3 OHM 1% 1/4W 0603
[Vishay Dale](#)

RFQ



RMCF2010FT115K
RES SMD 115K OHM 1% 3/4W 2010
[Stackpole Electronics Inc.](#)

RFQ



AT1206DRD07280KL
RES SMD 280K OHM 0.5% 1/4W 1206
[Yageo](#)

RFQ