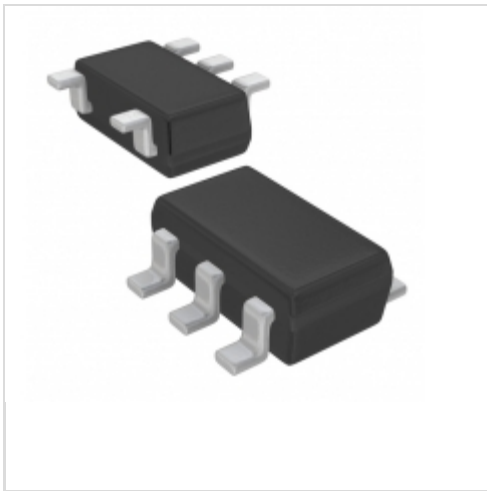


XC6122A418MR-G



Torex Semiconductor Ltd.

IC WATCHDOG TIMER SOT-25
Lead free / RoHS Compliant
Integrated Circuits (ICs)

[XC6122A418MR-G.pdf](#)

Buy Now

Out Stock

0 pcs

Minimum:1

Multiples:100

Manufacturer lead time 10 weeks

Images are for reference only.

See Product Specifications for product details.

If you are interested to buy XC6122A418MR-G,Just Email us.

Sales@zeanoit.com

our sales team will reply you within 24 hours

Shopping Process

1

Confirm the product

2

submit the order

3

payment

4

wait for delivery

5

receive the goods

Specifications

Voltage - Threshold:	1.8V
Type:	Watchdog Circuit
Supplier Device Package:	SOT-25
Series:	-
Reset Timeout:	200 ms Typical
Reset:	Active Low
Packaging:	Tape & Reel (TR)
Package / Case:	SC-74A, SOT-753
Output:	Open Drain or Open Collector
Operating Temperature:	-40°C ~ 85°C (TA)
Number of Voltages Monitored:	1
Mounting Type:	Surface Mount

Related products



XC6122A417ER-G
IC WATCHDOG TIMER 6-USP
[Torex Semiconductor Ltd](#)

RFQ



XC6122A416ER-G
IC WATCHDOG TIMER 6-USP
[Torex Semiconductor Ltd](#)

RFQ



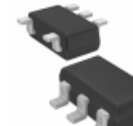
XC6122A419ER-G
IC WATCHDOG TIMER 6-USP
[Torex Semiconductor Ltd](#)

RFQ



XC6122A418ER-G
IC WATCHDOG TIMER 6-USP
[Torex Semiconductor Ltd](#)

RFQ



XC6122A416MR-G
IC WATCHDOG TIMER SOT-25
[Torex Semiconductor Ltd](#)

RFQ



XC6122A420ER-G
IC WATCHDOG TIMER 6-USP
[Torex Semiconductor Ltd](#)

RFQ



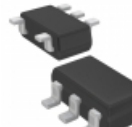
XC6122A421ER-G
IC WATCHDOG TIMER 6-USP
[Torex Semiconductor Ltd](#)

RFQ



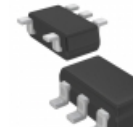
XC6122A419MR-G
IC WATCHDOG TIMER SOT-25
[Torex Semiconductor Ltd](#)

RFQ



XC6122A417MR-G
IC WATCHDOG TIMER SOT-25
[Torex Semiconductor Ltd](#)

RFQ



XC6122A420MR-G
IC WATCHDOG TIMER SOT-25
[Torex Semiconductor Ltd](#)

RFQ

Guess You May Looking For



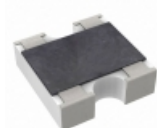
RR1220P-8450-B-M-T5
RES SMD 845 OHM 0.1% 1/10W 0805
[Susumu](#)

RFQ



RG2012P-4870-C-T5
RES SMD 487 OHM 0.25% 1/8W 0805
[Susumu](#)

RFQ



YC122-JR-0743KL
RES ARRAY 2 RES 43K OHM 0404
[Yageo](#)

RFQ



AF164-FR-0716RL
RES ARRAY 4 RES 16 OHM 1206
[Yageo](#)

RFQ



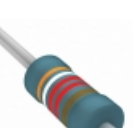
745C101474JTR
RES ARRAY 8 RES 470K OHM 2512
[CTS Resistor Products](#)

RFQ



OY103KE
RES 10K OHM 2W 10% AXIAL
[Ohmite](#)

RFQ



MRS25000C3922FC100
RES 39.2K OHM 0.6W 1% AXIAL
[Vishay BC Components](#)

RFQ



CMF55200K00DHEA
RES 200K OHM 1/2W 0.5% AXIAL
[Vishay Dale](#)

RFQ



CMF559K6500DHEA
RES 9.65K OHM 1/2W .5% AXIAL
[Vishay Dale](#)

RFQ



RN60C4422FR36
RES 44.2K OHM 1/4W 1% AXIAL
[Vishay Dale](#)

RFQ