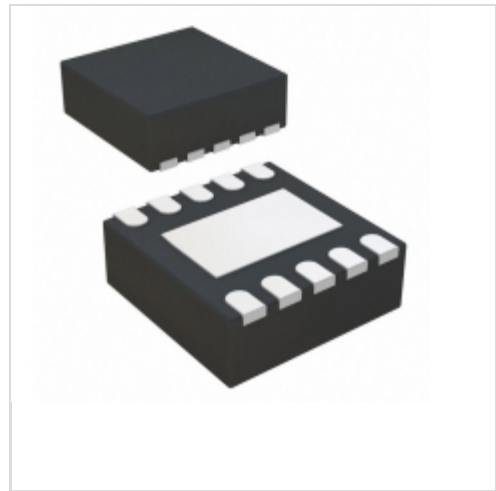


CHL8510CRT



International Rectifier (Infineon Technologies)

IC GATE DRVR HI/LOW SIDE 10DFN

Lead free / RoHS Compliant

Integrated Circuits (ICs)

[1.CHL8510CRT.pdf](#)

[2.CHL8510CRT.pdf](#)

Buy Now

We can supply CHL8510CRT, use the request quote form to request CHL8510CRT price and lead time. Zeano is a professional electronic components distributor. With 3+ Million line items of available electronic components can ship in short lead-time, over 250 thousand part numbers of electronic components in stock for immediately delivery, which may include part number CHL8510CRT. The price and lead time for CHL8510CRT depending on the quantity required and warehouse location. Contact us and our sales representative will provide you price. We look forward to work with you.

Out Stock

0 pcs

Minimum: 1

Multiples: 100

Manufacturer lead time 10 weeks

PRICE

3000 pcs	\$0.455
6000 pcs	\$0.432
15000 pcs	\$0.416

Shopping Process

1

Confirm the product

2

submit the order

3

payment

4

wait for delivery

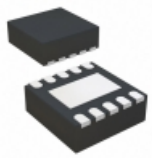
5

receive the goods

Specifications

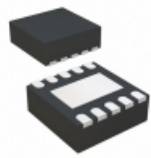
Voltage - Supply:	10.8 V ~ 13.2 V
Supplier Device Package:	10-DFN (3x3)
Series:	-
Rise / Fall Time (Typ):	21ns, 18ns
Packaging:	Tape & Reel (TR)
Package / Case:	10-VDFDN Exposed Pad
Operating Temperature:	0°C ~ 125°C (TJ)
Number of Drivers:	2
Mounting Type:	Surface Mount
Logic Voltage - VIL, VIH:	0.8V, 1V
Input Type:	Non-Inverting
High Side Voltage - Max (Bootstrap):	35V
Gate Type:	N-Channel MOSFET
Driven Configuration:	Half-Bridge
Current - Peak Output (Source, Sink):	3A, 4A
Channel Type:	Synchronous

Related products



CHL8550CRT
IC GATE DRVR HI/LOW SIDE 10DFN
[Infineon Technologies](#)

RFQ



CHL8515CRT
IC GATE DRVR HI/LOW SIDE 10DFN
[Infineon Technologies](#)

RFQ



CHL8338 E1
[CHIL](#)

RFQ



CHL8510CRT
in stock
[TI](#)

RFQ



CHL8328.
[CHIL](#)

RFQ



CHL8500
in stock
[TI](#)

RFQ



CHL8550CRT.
[CHL](#)

RFQ



CHL8505CRT
IC GATE DRIVER 5V 10DFN
[Infineon Technologies](#)

RFQ



CHL8328-32CRT
[CHIL](#)

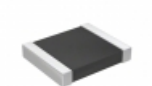
RFQ



CHL8338
[CHIL](#)

RFQ

Guess You May Looking For



RT1210CRE0742K2L
RES SMD 42.2KOHM 0.25% 1/4W 1210
[Yageo](#)

RFQ



RNCF1210BTC7R50
RES SMD 7.5 OHM 0.1% 1/3W 1210
[Stackpole Electronics Inc.](#)

RFQ



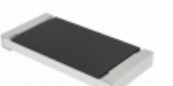
RCL1218332RFKEK
RES SMD 332 OHM 1W 1812 WIDE
[Vishay Dale](#)

RFQ



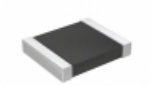
RNCF1210BTC68R1
RES SMD 68.1 OHM 0.1% 1/3W 1210
[Stackpole Electronics Inc.](#)

RFQ



CRCW251212R0JNEGHP
RES SMD 12 OHM 5% 1.5W 2512
[Vishay Dale](#)

RFQ



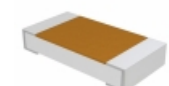
RT1210CRD0780R6L
RES SMD 80.6 OHM 0.25% 1/4W 1210
[Yageo](#)

RFQ



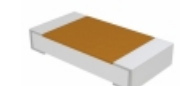
RG1608P-1743-W-T1
RES SMD 174KOHM 0.05% 1/10W 0603
[Susumu](#)

RFQ



TNPW12062K55BETA
RES SMD 2.55K OHM 0.1% 1/4W 1206
[Vishay Dale](#)

RFQ



TNPW120639K2BETA
RES SMD 39.2K OHM 0.1% 1/4W 1206
[Vishay Dale](#)

RFQ



RT1206BRC07430KL
RES SMD 430K OHM 0.1% 1/4W 1206
[Yageo](#)

RFQ