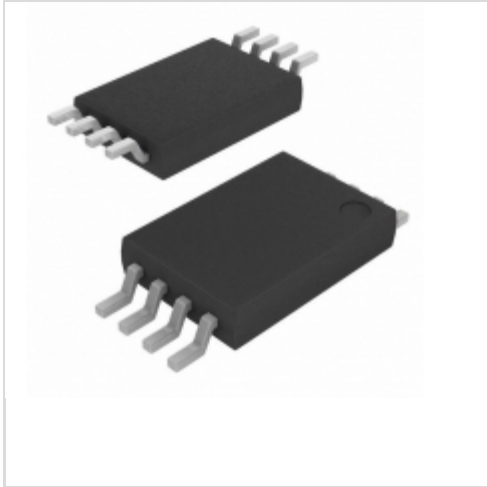


AT93C86A-10TI-2.7

Microchip Technology

IC EEPROM 16KBIT 2MHZ 8TSSOP
 Contains lead / RoHS non-compliant
 Integrated Circuits (ICs)

[AT93C86A-10TI-2.7.pdf](#)

Buy Now

part#AT93C86A-10TI-2.7 is available, see description of AT93C86A-10TI-2.7 as below

use the request quote form to request AT93C86A-10TI-2.7 price and lead time.
 Buy Electronic Components at zeanoit.com .we are an independent distributor of electronic components with extensive inventory in stock.
 The price and lead time for AT93C86A-10TI-2.7 depending on the quantity required, availability and warehouse location.Contact us today and our sales team will send you quotation soon.
 Email: sales@zeanoit.com

Shopping Process

1

Confirm the product



2

submit the order



3

payment



4

wait for delivery



5

receive the goods

Specifications

Voltage - Supply:	2.7 V ~ 5.5 V
Supplier Device Package:	8-TSSOP
Speed:	2MHz
Series:	-
Packaging:	Tube
Package / Case:	8-TSSOP (0.173", 4.40mm Width)
Operating Temperature:	-40°C ~ 85°C (TA)
Memory Type:	Non-Volatile
Memory Size:	16Kb (2K x 8, 1K x 16)
Memory Format:	EEPROM
Interface:	Microwire, 3-Wire Serial

Related products


AT93C86A-10SU
[ATMEL](#)

RFQ



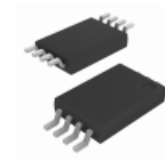
AT93C86A-10SU-1.8
 IC EEPROM 16KBIT 2MHZ 8SOIC
[Microchip Technology](#)

RFQ



AT93C86A-SQ27
[ATMEL](#)

RFQ



AT93C86A-10TI-1.8
 IC EEPROM 16KBIT 2MHZ 8TSSOP
[Microchip Technology](#)

RFQ



AT93C86A-10SQ-2.7
 Three-wire Automotive Temperature
 Serial EEPROM 16K (2048 x 8 or 1024 x 16)

RFQ



AT93C86A-10TU-1.8
 IC EEPROM 16KBIT 2MHZ 8TSSOP
[Microchip Technology](#)

RFQ



AT93C86A-10TU-2.7
 IC EEPROM 16KBIT 2MHZ 8TSSOP
[Microchip Technology](#)

RFQ



AT93C86A-W1.8-11
 Three-wire Serial EEPROM
[ATMEL](#)

RFQ



AT93C86A-10SU-2.7
 IC EEPROM 16KBIT 2MHZ 8SOIC
[Microchip Technology](#)

RFQ



AT93C86A-10TQ-2.7
 Three-wire Automotive Temperature
 Serial EEPROM 16K (2048 x 8 or 1024 x 16)

RFQ

Guess You May Looking For


RC1206FR-076R65L
 RES SMD 6.65 OHM 1% 1/4W 1206
[Yageo](#)

RFQ



ERA-1ARB8871C
 RES SMD 8.87KOHM 0.1% 1/20W 0201
[Panasonic Electronic Components](#)

RFQ



RC0201DR-07499KL
 RES SMD 499K OHM 0.5% 1/20W 0201
[Yageo](#)

RFQ



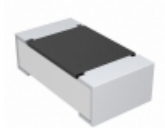
AF0603FR-07576RL
 RES SMD 576 OHM 1% 1/10W 0603
[Yageo](#)

RFQ



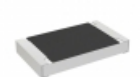
RR1220P-7873-D-M
 RES SMD 787K OHM 0.5% 1/10W 0805
[Susumu](#)

RFQ



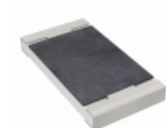
CRCW060341K2FKEAHP
 RES SMD 41.2K OHM 1% 1/4W 0603
[Vishay Dale](#)

RFQ



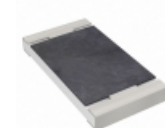
RCS0805187KFKEA
 RES SMD 187K OHM 1% 0.4W 0805
[Vishay Dale](#)

RFQ



RC2010FK-076R98L
 RES SMD 6.98 OHM 1% 3/4W 2010
[Yageo](#)

RFQ



AC2010FK-07309KL
 RES SMD 309K OHM 1% 3/4W 2010
[Yageo](#)

RFQ



RT0603CRE07261KL
 RES SMD 261KOHM 0.25% 1/10W 0603
[Yageo](#)

RFQ