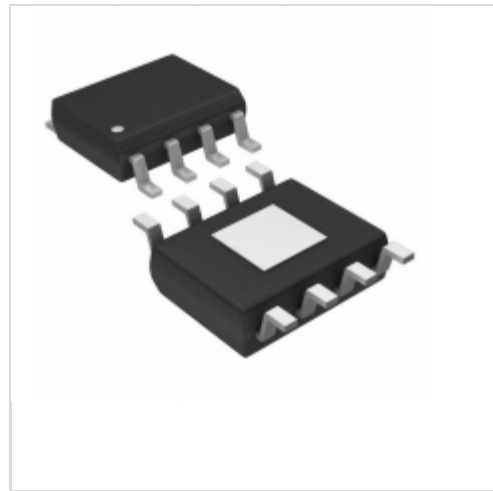


**SR037SG-G**

**Microchip Technology**

IC REG CONTROLLER SWITCH 8SOIC  
Lead free / RoHS Compliant  
Integrated Circuits (ICs)

[SR037SG-G.pdf](#)

**Buy Now**

Images are for reference only.

See Product Specifications for product details.

If you are interested to buy SR037SG-G,Just Email us.

Sales@zeanoit.com

our sales team will reply you within 24 hours

**Shopping Process**

**1**

Confirm the product

**2**

submit the order

**3**

payment

**4**

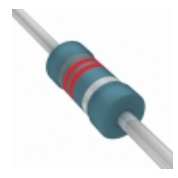
wait for delivery

**5**

receive the goods

**Specifications**

<b>Voltage - Supply (Vcc/Vdd):</b>	-
<b>Voltage - Breakdown:</b>	-
<b>Topology:</b>	Inductorless
<b>Supplier Device Package:</b>	8-SOIC
<b>Series:</b>	-
<b>Power (Watts):</b>	1W
<b>Packaging:</b>	Tape & Reel (TR)
<b>Package / Case:</b>	8-SOIC (0.154", 3.90mm Width) Exposed Pad
<b>Output Isolation:</b>	Non-Isolated
<b>Operating Temperature:</b>	0°C ~ 125°C (TA)
<b>Mounting Type:</b>	Surface Mount
<b>Internal Switch(s):</b>	No
<b>Frequency - Switching:</b>	-
<b>Fault Protection:</b>	-
<b>Duty Cycle:</b>	-
<b>Control Features:</b>	-

**Related products**


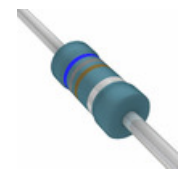
**SR03700008201KR500**  
RES 8.2K OHM 1/2W 10% AXIAL  
[Vishay BC Components](#)

RFQ



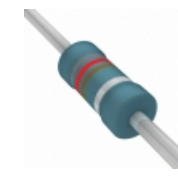
**SR038-5.140**  
FRAME LOC EXTRUSION 65" ALUMINUM  
[Vector Electronics](#)

RFQ



**SR03700006800KR500**  
RES 680 OHM 1/2W 10% AXIAL  
[Vishay BC Components](#)

RFQ



**SR03700008200KR500**  
RES 820 OHM 1/2W 10% AXIAL  
[Vishay BC Components](#)

RFQ



**SR0402FR-07100RL**  
RES SMD 100 OHM 1% 1/16W 0402  
[Yageo](#)

RFQ



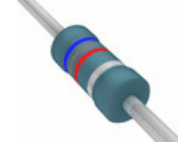
**SR039F**  
SMD

RFQ



**SR0402FR-07100KL**  
RES SMD 100K OHM 1% 1/16W 0402  
[Yageo](#)

RFQ



**SR03700006801KR500**  
RES 6.8K OHM 1/2W 10% AXIAL  
[Vishay BC Components](#)

RFQ



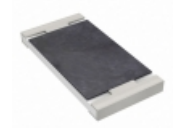
**SR04**  
CABLE STRAIN RELIEF YELLW 25/PKG  
[Switchcraft Inc.](#)

RFQ



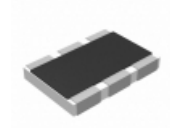
**SR037SG**  
SUPERTEX

RFQ

**Guess You May Looking For**


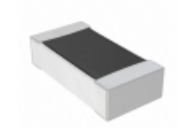
**AC2512FK-0730K1L**  
RES SMD 30.1K OHM 1% 1W 2512  
[Yageo](#)

RFQ



**RC1218FK-0780K6L**  
RES SMD 80.6K OHM 1W 1812 WIDE  
[Yageo](#)

RFQ



**RNCF0603BTE511K**  
RES SMD 511K OHM 0.1% 1/10W 0603  
[Stackpole Electronics Inc.](#)

RFQ



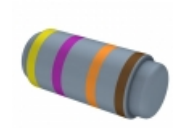
**RNCF1206BTC374R**  
RES SMD 374 OHM 0.1% 1/3W 1206  
[Stackpole Electronics Inc.](#)

RFQ



**ERA-2HEC1330X**  
RES SMD 133 OHM 0.25% 1/16W 0402  
[Panasonic Electronic Components](#)

RFQ



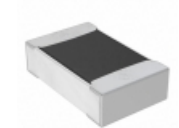
**MMF-50FRF47K**  
RES SMD 47K OHM 1% 1/2W MELF  
[Yageo](#)

RFQ



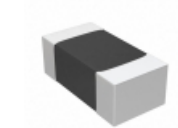
**RT0805BRE07562KL**  
RES SMD 562K OHM 0.1% 1/8W 0805  
[Yageo](#)

RFQ



**RNCF0805BTE22K1**  
RES SMD 22.1K OHM 0.1% 1/8W 0805  
[Stackpole Electronics Inc.](#)

RFQ



**RNCF0402BKE16K9**  
RES SMD 16.9KOHM 0.1% 1/16W 0402  
[Stackpole Electronics Inc.](#)

RFQ



**RNCF0402BKE1K37**  
RES SMD 1.37KOHM 0.1% 1/16W 0402  
[Stackpole Electronics Inc.](#)

RFQ