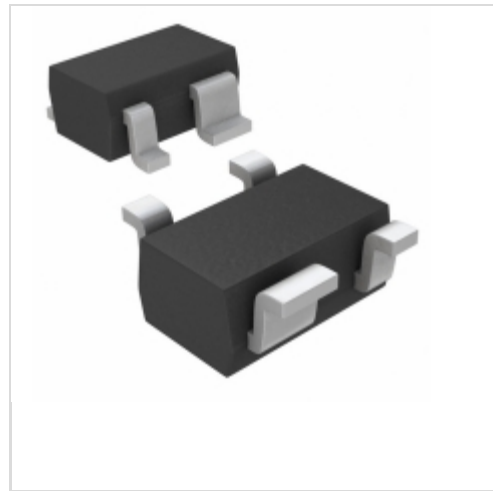


MAX6385XS46D4-T



Maxim Integrated

IC MPU/RESET CIRC 4.63V SC70-4
Contains lead / RoHS non-compliant
Integrated Circuits (ICs)

- [1.MAX6385XS46D4-T.pdf](#)
- [2.MAX6385XS46D4-T.pdf](#)

[Buy Now](#)

We can supply MAX6385XS46D4-T, use the request quote form to request MAX6385XS46D4-T price and lead time. Zeano is a professional electronic components distributor. With 3+ Million line items of available electronic components can ship in short lead-time, over 250 thousand part numbers of electronic components in stock for immediately delivery, which may include part number MAX6385XS46D4-T. The price and lead time for MAX6385XS46D4-T depending on the quantity required and warehouse location. Contact us and our sales representative will provide you price. We look forward to work with you.

Shopping Process

1

Confirm the product

2

submit the order

3

payment

4

wait for delivery

5

receive the goods

Specifications

Voltage - Threshold:	4.63V
Type:	Simple Reset/Power-On Reset
Supplier Device Package:	SC-70-4
Series:	-
Reset Timeout:	1.12 s Minimum
Reset:	Active High
Packaging:	Tape & Reel (TR)
Package / Case:	SC-82A, SOT-343
Output:	Push-Pull, Totem Pole
Operating Temperature:	-40°C ~ 125°C (TA)
Number of Voltages Monitored:	1
Mounting Type:	Surface Mount

Related products



MAX6385XS46D2-T
in stock
[MAXIM](#)

RFQ



MAX6385XS46D3-T
in stock
[MAXIM](#)

RFQ



MAX6385XS46D2-T
IC MPU/RESET CIRC 4.63V SC70-4
[Maxim Integrated](#)

RFQ



MAX6385XS46D3+T
IC MPU/RESET CIRC 4.63V SC70-4
[Maxim Integrated](#)

RFQ



MAX6385XS46D6-T
IC MPU/RESET CIRC 4.63V SC70-4
[Maxim Integrated](#)

RFQ



MAX6385XS46D5-T
IC MPU/RESET CIRC 4.63V SC70-4
[Maxim Integrated](#)

RFQ



MAX6385XS46D6-T
in stock
[MAXIM](#)

RFQ



MAX6385XS46D7-T
IC MPU/RESET CIRC 4.63V SC70-4
[Maxim Integrated](#)

RFQ



MAX6385XS46D5-T
in stock
[MAXIM](#)

RFQ



MAX6385XS46D4-T
in stock
[MAXIM](#)

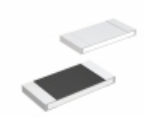
RFQ

Guess You May Looking For



MCR18EZH7502
RES SMD 75K OHM 1% 1/4W 1206
[Rohm Semiconductor](#)

RFQ



MCR18EZH2101
RES SMD 2.1K OHM 1% 1/4W 1206
[Rohm Semiconductor](#)

RFQ



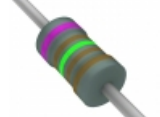
MCR18EZH2741
RES SMD 2.74K OHM 1% 1/4W 1206
[Rohm Semiconductor](#)

RFQ



4610X-102-222LF
RES ARRAY 5 RES 2.2K OHM 10SIP
[Bourns Inc.](#)

RFQ



RNF14FTD7K15
RES 7.15K OHM 1/4W 1% AXIAL
[Stackpole Electronics Inc.](#)

RFQ



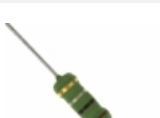
40J1R0E
RES 1 OHM 10W 5% AXIAL
[Ohmite](#)

RFQ



PRNF14FTD698R
RES 698 OHM 1/4W 1% AXIAL
[Stackpole Electronics Inc.](#)

RFQ



RSMF2JT5R60
RES 5.6 OHM 2W 5% AXIAL
[Stackpole Electronics Inc.](#)

RFQ



CMF551K9600FHEA
RES 1.96K OHM 1/2W 1% AXIAL
[Vishay Dale](#)

RFQ



RC14KT180K
RES 180K OHM 1/4W 10% AXIAL
[Stackpole Electronics Inc.](#)

RFQ