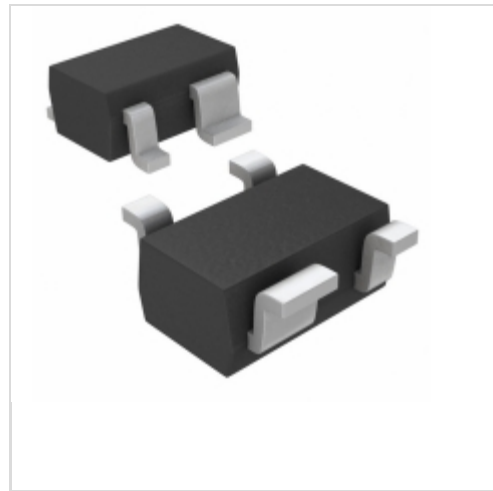


## MAX6388XS28D5-T



**Maxim Integrated**

IC MPU/RESET CIRC 2.80V SC70-4  
Contains lead / RoHS non-compliant  
Integrated Circuits (ICs)

- [1.MAX6388XS28D5-T.pdf](#)
- [2.MAX6388XS28D5-T.pdf](#)

**Buy Now**

We can supply MAX6388XS28D5-T, use the request quote form to request MAX6388XS28D5-T price and lead time. Zeano is a professional electronic components distributor. With 3+ Million line items of available electronic components can ship in short lead-time, over 250 thousand part numbers of electronic components in stock for immediately delivery, which may include part number MAX6388XS28D5-T. The price and lead time for MAX6388XS28D5-T depending on the quantity required and warehouse location. Contact us and our sales representative will provide you price. We look forward to work with you.

### Shopping Process

**1**

Confirm the product

**2**

submit the order

**3**

payment

**4**

wait for delivery

**5**

receive the goods

### Specifications

<b>Voltage - Threshold:</b>	2.8V, Adj
<b>Type:</b>	Multi-Voltage Supervisor
<b>Supplier Device Package:</b>	SC-70-4
<b>Series:</b>	-
<b>Reset Timeout:</b>	280 ms Minimum
<b>Reset:</b>	Active High
<b>Packaging:</b>	Tape & Reel (TR)
<b>Package / Case:</b>	SC-82A, SOT-343
<b>Output:</b>	Push-Pull, Totem Pole
<b>Operating Temperature:</b>	-40°C ~ 125°C (TA)
<b>Number of Voltages Monitored:</b>	2
<b>Mounting Type:</b>	Surface Mount

### Related products



**MAX6388XS28D7-T**  
IC MPU/RESET CIRC 2.80V SC70-4  
[Maxim Integrated](#)

RFQ



**MAX6388XS28D5-T**  
in stock  
[MAXIM](#)

RFQ



**MAX6388XS28D4-T**  
IC MPU/RESET CIRC 2.80V SC70-4  
[Maxim Integrated](#)

RFQ



**MAX6388XS28D7-T**  
in stock  
[MAXIM](#)

RFQ



**MAX6388XS28D4-T**  
in stock  
[MAXIM](#)

RFQ



**MAX6388XS28D3-T**  
IC MPU/RESET CIRC 2.80V SC70-4  
[Maxim Integrated](#)

RFQ



**MAX6388XS28D6-T**  
IC MPU/RESET CIRC 2.80V SC70-4  
[Maxim Integrated](#)

RFQ



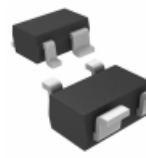
**MAX6388XS28D6-T**  
in stock  
[MAXIM](#)

RFQ



**MAX6388XS28D3-T**  
in stock  
[MAXIM](#)

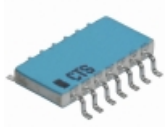
RFQ



**MAX6388XS28D2-T**  
IC MPU/RESET CIRC 2.80V SC70-4  
[Maxim Integrated](#)

RFQ

### Guess You May Looking For



**767143474GPTR13**  
RES ARRAY 7 RES 470K OHM 14SOIC  
[CTS Resistor Products](#)

RFQ



**OY470KE**  
RES 47 OHM 2W 10% AXIAL  
[Ohmite](#)

RFQ



**23J5R0E**  
RES 5 OHM 3W 5% AXIAL  
[Ohmite](#)

RFQ



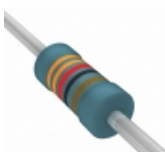
**RL20S104GB14**  
RES 100K OHM 1/2W 2% AXIAL  
[Vishay Dale](#)

RFQ



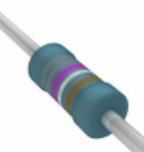
**PR03000201003JAC00**  
RES 100K OHM 3W 5% AXIAL  
[Vishay BC Components](#)

RFQ



**SFR25H0003320FR500**  
RES 332 OHM 1/2W 1% AXIAL  
[Vishay BC Components](#)

RFQ



**MRS25000C8878FRP00**  
RES 8.87 OHM 0.6W 1% AXIAL  
[Vishay BC Components](#)

RFQ



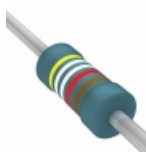
**RN55C6652FR36**  
RES 66.5K OHM 1/8W 1% AXIAL  
[Vishay Dale](#)

RFQ



**RN55E3652FR36**  
RES 36.5K OHM 1/8W 1% AXIAL  
[Vishay Dale](#)

RFQ



**MBB02070D4992FC100**  
RES 49.9K OHM 0.6W 1% AXIAL  
[Vishay BC Components](#)

RFQ