

CAT1021WI-28-GT3



[AMI Semiconductor / ON Semiconductor](#)

IC SUPERVISR CPU 2K EEPROM 8SOIC

Lead free / RoHS Compliant

Integrated Circuits (ICs)

[CAT1021WI-28-GT3.pdf](#)

[Buy Now](#)

We can supply AMI Semiconductor / ON Semiconductor CAT1021WI-28-GT3, use the request quote form to request CAT1021WI-28-GT3 pirce, AMI Semiconductor / ON Semiconductor Datasheet PDF and lead time.Zeanoit.com is a professional electronic components distributor. With 3+ Million line items of available electronic components can ship in short lead-time, over 250 thousand part numbers of electronic components in stock for immediately delivery, which may include part number CAT1021WI-28-GT3.The price and lead time for CAT1021WI-28-GT3 depending on the quantity required, availability and warehouse location.

Out Stock

0 pcs

Minimum:1

Multiples:100

Manufacturer lead time 10 weeks

Shopping Process

1

Confirm the product

2

submit the order

3

payment

4

wait for delivery

5

receive the goods

Specifications

Voltage - Threshold:	2.85V
Type:	Simple Reset/Power-On Reset
Supplier Device Package:	8-SOIC
Series:	-
Reset Timeout:	130 ms Minimum
Reset:	Active High/Active Low
Packaging:	Tape & Reel (TR)
Package / Case:	8-SOIC (0.154", 3.90mm Width)
Output:	Open Drain or Open Collector
Operating Temperature:	-40°C ~ 85°C (TA)
Number of Voltages Monitored:	1
Mounting Type:	Surface Mount

Related products



CAT1021WI-45-GT3

IC SUPERVISR CPU 2K EEPROM 8SOIC
[ON Semiconductor](#)

[RFQ](#)



CAT1021WI

[CAT](#)

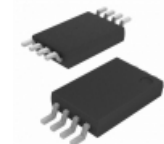
[RFQ](#)



CAT1021WI-25-GT3

IC SUPERVISR CPU 2K EEPROM 8SOIC
[ON Semiconductor](#)

[RFQ](#)



CAT1021YI-28-GT3

IC SUPERVISOR CPU 2K EEPR 8TSSOP
[ON Semiconductor](#)

[RFQ](#)



CAT1021YI-25-GT3

IC SUPERVISOR CPU 2K EEPR 8TSSOP
[ON Semiconductor](#)

[RFQ](#)



CAT1021SI-30

[CAT](#)

[RFQ](#)



CAT1021WI-42-GT3

IC SUPERVISR CPU 2K EEPROM 8SOIC
[ON Semiconductor](#)

[RFQ](#)



CAT1021LI42

IC SUPERVISR CPU 2K EEPROM 8DIP
[ON Semiconductor](#)

[RFQ](#)



CAT1021LI45

IC SUPERVISR CPU 2K EEPROM 8DIP
[ON Semiconductor](#)

[RFQ](#)

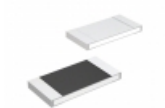


CAT1021WI-30-GT3

IC SUPERVISR CPU 2K EEPROM 8SOIC
[ON Semiconductor](#)

[RFQ](#)

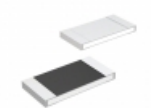
Guess You May Looking For



MCR18EZH59R0

RES SMD 59 OHM 1% 1/4W 1206
[Rohm Semiconductor](#)

[RFQ](#)



MCR18EZH1584

RES SMD 1.58M OHM 1% 1/4W 1206
[Rohm Semiconductor](#)

[RFQ](#)



RG1608N-2552-C-T5

RES SMD 25.5K OHM 1/10W 0603
[Susumu](#)

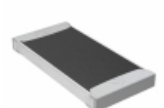
[RFQ](#)



RG1608P-5361-C-T5

RES SMD 5.36K OHM 1/10W 0603
[Susumu](#)

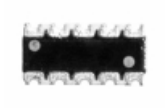
[RFQ](#)



TNPW25128K45BEEY

RES SMD 8.45K OHM 0.1% 1/2W 2512
[Vishay Dale](#)

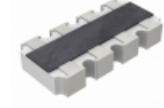
[RFQ](#)



RACF164DJT560R

RES ARRAY 4 RES 560 OHM 1206
[Stackpole Electronics Inc.](#)

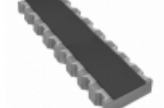
[RFQ](#)



YC164-FR-075K1L

RES ARRAY 4 RES 5.1K OHM 1206
[Yageo](#)

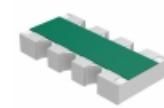
[RFQ](#)



742C163240JP

RES ARRAY 8 RES 24 OHM 2506
[CTS Resistor Products](#)

[RFQ](#)



MNR14E0ABJ431

RES ARRAY 4 RES 430 OHM 1206
[Rohm Semiconductor](#)

[RFQ](#)



RNF14BTC84K5

RES 84.5K OHM 1/4W 0.1% AXIAL
[Stackpole Electronics Inc.](#)

[RFQ](#)