

APX810S-44SR-7



Diodes Incorporated
IC RESET GENERATOR SOT23
Lead free / RoHS Compliant
Integrated Circuits (ICs)

[APX810S-44SR-7.pdf](#)

Buy Now

Out Stock
0 pcs
Minimum:1
Multiples:100
Manufacturer lead time 10 weeks

PRICE	
3000 pcs	\$0.103
6000 pcs	\$0.097
15000 pcs	\$0.091
30000 pcs	\$0.083
65535 pcs	\$0.08

part#APX810S-44SR-7 is available, see description of APX810S-44SR-7 as below . use the request quote form to request APX810S-44SR-7 price and lead time. Buy Electronic Components at zeanoit.com .we are an independent distributor of electronic components with extensive inventory in stock. The price and lead time for APX810S-44SR-7 depending on the quantity required, availability and warehouse location.Contact us today and our sales team will send you quotation soon.
Email: sales@zeanoit.com

Shopping Process

1

Confirm the product

2

submit the order

3

payment

4

wait for delivery

5

receive the goods

Specifications

Voltage - Threshold:	4.38V
Type:	Simple Reset/Power-On Reset
Supplier Device Package:	SOT-23
Series:	-
Reset Timeout:	140 ms Minimum
Reset:	Active High
Packaging:	Tape & Reel (TR)
Package / Case:	TO-236-3, SC-59, SOT-23-3
Output:	Push-Pull, Totem Pole
Operating Temperature:	-40°C ~ 125°C (TA)
Number of Voltages Monitored:	1
Mounting Type:	Surface Mount

Related products



APX810S-29SA-7
IC RESET GENERATOR SOT23
[Diodes Incorporated](#)

RFQ



APX810-44SRG-7
IC MPU RESET CIRC 4.38V SOT23R-3
[Diodes Incorporated](#)

RFQ



APX810-46SRG-7
IC MPU RESET CIRC 4.63V SOT23R-3
[Diodes Incorporated](#)

RFQ



APX810-46SAG-7
IC MPU RESET CIRC 4.63V SOT23-3
[Diodes Incorporated](#)

RFQ



APX811-26UG-7
IC SUPERVISOR 2.63V SOT143-4
[Diodes Incorporated](#)

RFQ



APX810S00-29SR-7
IC RESET GENERATOR SOT23
[Diodes Incorporated](#)

RFQ



APX810S-44SA-7
IC RESET GENERATOR SOT23
[Diodes Incorporated](#)

RFQ



APX811-23UG-7
IC SUPERVISOR 2.25V SOT143-4
[Diodes Incorporated](#)

RFQ



APX811-29UG-7
IC SUPERVISOR 2.93V SOT143-4
[Diodes Incorporated](#)

RFQ



APX810S05-29SR-7
IC RESET GENERATOR SOT23
[Diodes Incorporated](#)

RFQ

Guess You May Looking For



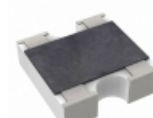
RG1608P-8450-B-T5-90A
RES SMD 845 OHM 0.1% 1/10W 0603
[Susumu](#)

RFQ



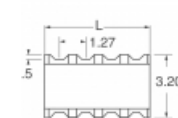
RG3216P-5362-W-T1
RES SMD 53.6KOHM 0.05% 1/4W 1206
[Susumu](#)

RFQ



AF162-JR-071ML
RES ARRAY 2 RES 1M OHM 0606
[Yageo](#)

RFQ



744C043332JPTR
RES ARRAY 2 RES 3.3K OHM 1210
[CTS Resistor Products](#)

RFQ



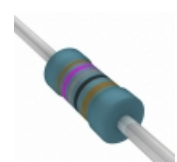
4606M-101-223LF
RES ARRAY 5 RES 22K OHM 6SIP
[Bourns Inc.](#)

RFQ



YC324-FK-0735R7L
RES ARRAY 4 RES 35.7 OHM 2012
[Yageo](#)

RFQ



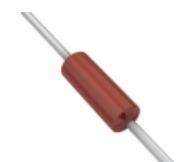
MRS25000C1780FCT00
RES 178 OHM 0.6W 1% AXIAL
[Vishay BC Components](#)

RFQ



CMF07220R00JKR6
RES 220 OHM 1/2W 5% AXIAL
[Vishay Dale](#)

RFQ



CMF6011R800FHR6
RES 11.8 OHM 1W 1% AXIAL
[Vishay Dale](#)

RFQ



CMF55590R00DHEB
RES 590 OHM 1/2W .5% AXIAL
[Vishay Dale](#)

RFQ