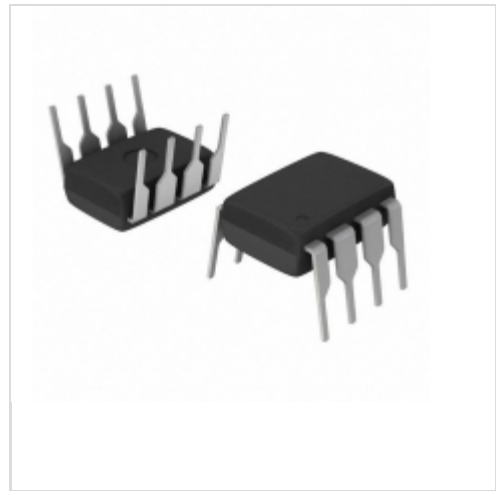


IRS2111PBF



International Rectifier (Infineon Technologies)

IC DRIVER HALF-BRIDGE 8-DIP
Lead free / RoHS Compliant
Integrated Circuits (ICs)

[IRS2111PBF.pdf](#)

Buy Now

Out Stock

0 pcs

Minimum:1

Multiples:100

Manufacturer lead time 10 weeks

Images are for reference only.

See Product Specifications for product details.

If you are interested to buy IRS2111PBF,Just Email us.

Sales@zeanoit.com

our sales team will reply you within 24 hours

Shopping Process

1

Confirm the product

2

submit the order

3

payment

4

wait for delivery

5

receive the goods

Specifications

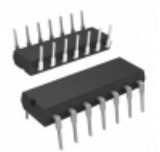
Voltage - Supply:	10 V ~ 20 V
Supplier Device Package:	8-DIP
Series:	-
Rise / Fall Time (Typ):	75ns, 35ns
Packaging:	Tube
Package / Case:	8-DIP (0.300", 7.62mm)
Operating Temperature:	-40°C ~ 150°C (TJ)
Number of Drivers:	2
Mounting Type:	Through Hole
Logic Voltage - VIL, VIH:	8.3V, 12.6V
Input Type:	Inverting, Non-Inverting
High Side Voltage - Max (Bootstrap):	600V
Gate Type:	IGBT, N-Channel MOSFET
Driven Configuration:	Half-Bridge
Current - Peak Output (Source, Sink):	290mA, 600mA
Channel Type:	Synchronous

Related products



IRS2111STRPBF
IC DRIVER HALF-BRIDGE 8-SOIC
[Infineon Technologies](#)

RFQ



IRS2112PBF
IC DRIVER HI/LO SIDE 600V 14-DIP
[Infineon Technologies](#)

RFQ



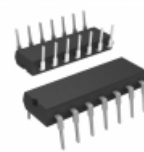
IRS2112
[IR](#)

RFQ



IRS2112S
[IR](#)

RFQ



IRS2110PBF
IC DRIVER HI/LO SIDE 500V 14-DIP
[Infineon Technologies](#)

RFQ



IRS2110STRPBF
IC DRIVER HIGH/LOW SIDE 16-SOIC
[Infineon Technologies](#)

RFQ



IRS2111SPBF
IC DRIVER HALF-BRIDGE 8-SOIC
[Infineon Technologies](#)

RFQ



IRS2110S
[IOR](#)

RFQ



IRS2110SPBF
IC DRIVER HIGH/LOW SIDE 16-SOIC
[Infineon Technologies](#)

RFQ



IRS2111
[IR](#)

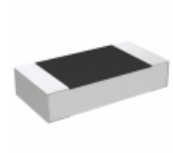
RFQ

Guess You May Looking For



ERJ-B1AJ300U
RES SMD 30 OHM 1W 2010 WIDE
[Panasonic Electronic Components](#)

RFQ



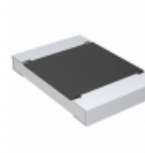
CPF1206B80R6E1
RES SMD 80.6 OHM 0.1% 1/8W 1206
[TE Connectivity Passive Product](#)

RFQ



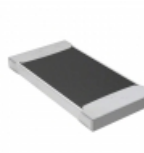
RNCF2010BKE73K2
RES SMD 73.2K OHM 0.1% 1/3W 2010
[Stackpole Electronics Inc.](#)

RFQ



CRCW12189R10FKEK
RES SMD 9.1 OHM 1% 1W 1218
[Vishay Dale](#)

RFQ



CSNL2512JT5L00
RES SMD 0.005 OHM 5% 2W 2512
[Stackpole Electronics Inc.](#)

RFQ



RNCF1210BKE130K
RES SMD 130K OHM 0.1% 1/3W 1210
[Stackpole Electronics Inc.](#)

RFQ



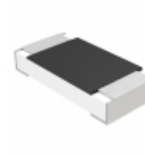
RNCF1210BKE2M43
RES SMD 2.43M OHM 0.1% 1/4W 1210
[Stackpole Electronics Inc.](#)

RFQ



ERJ-B1BJ5R6U
RES SMD 5.6 OHM 2W 2010 WIDE
[Panasonic Electronic Components](#)

RFQ



MCA12060D2051BP500
RES SMD 2.05K OHM 0.1% 1/4W 1206
[Vishay Beyschlag](#)

RFQ



RNCF2512BTE39R2
RES SMD 39.2 OHM 0.1% 1W 2512
[Stackpole Electronics Inc.](#)

RFQ