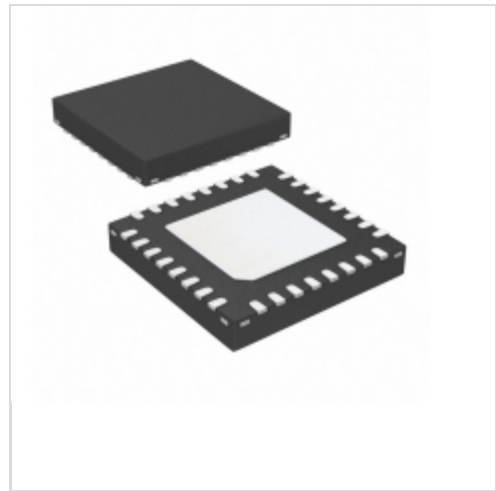


AMIS30623C623BRG



[AMI Semiconductor / ON Semiconductor](#)

IC MOTOR DRIVER PAR 32NQP

Lead free / RoHS Compliant

Integrated Circuits (ICs)

[AMIS30623C623BRG.pdf](#)

Buy Now

Images are for reference only.

See Product Specifications for product details.

If you are interested to buy AMIS30623C623BRG,Just Email us.

Sales@zeanoit.com

our sales team will reply you within 24 hours

Out Stock

0 pcs

Minimum:1

Multiples:100

Manufacturer lead time 10 weeks

Shopping Process

1

Confirm the product

2

submit the order

3

payment

4

wait for delivery

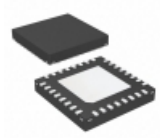
5

receive the goods

Specifications

Voltage - Supply:	6.5 V ~ 29 V
Voltage - Load:	6.5 V ~ 29 V
Technology:	-
Supplier Device Package:	32-NQFP (7x7)
Step Resolution:	1/2, 1/4, 1/8, 1/16
Series:	-
Packaging:	Tape & Reel (TR)
Package / Case:	32-VQFN Exposed Pad
Output Configuration:	Half Bridge (4)
Operating Temperature:	-40°C ~ 165°C (TJ)
Mounting Type:	Surface Mount
Motor Type - Stepper:	Bipolar
Motor Type - AC, DC:	-
Interface:	LIN
Function:	Driver - Fully Integrated, Control and Power Stage
Current - Output:	570mA
Applications:	General Purpose

Related products



AMIS30624C6245G
IC MOTOR DRIVER I2C 32NQP
[ON Semiconductor](#)

RFQ



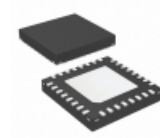
AMIS30624C6244RG
IC MOTOR DRIVER I2C 20SOIC
[ON Semiconductor](#)

RFQ



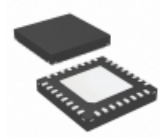
AMIS30623C6239G
IC MOTOR DRIVER PAR 20SOIC
[ON Semiconductor](#)

RFQ



AMIS30623C623ARG
IC MOTOR DRIVER PAR 32NQP
[ON Semiconductor](#)

RFQ



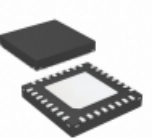
AMIS30624C6245RG
IC MOTOR DRIVER I2C 32NQP
[ON Semiconductor](#)

RFQ



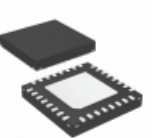
AMIS30623PGA
[AMIS](#)

RFQ



AMIS30623C623AG
IC MOTOR DRIVER PAR 32NQP
[ON Semiconductor](#)

RFQ



AMIS30623C623BG
IC MOTOR DRIVER PAR 32NQP
[ON Semiconductor](#)

RFQ



AMIS30623C6239RG
IC MOTOR DRIVER PAR 20SOIC
[ON Semiconductor](#)

RFQ



AMIS30624C6244G
IC MOTOR DRIVER I2C 20SOIC
[ON Semiconductor](#)

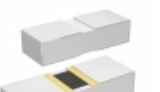
RFQ

Guess You May Looking For



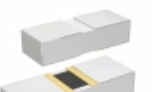
RG1005V-162-D-T10
RES SMD 1.6K OHM 0.5% 1/16W 0402
[Susumu](#)

RFQ



PHP00603E1961BBT1
RES SMD 1.96K OHM 0.1% 3/8W 0603
[Vishay Thin Film](#)

RFQ



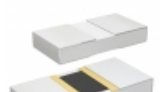
PHP00603E21R0BBT1
RES SMD 21 OHM 0.1% 3/8W 0603
[Vishay Thin Film](#)

RFQ



PHP00805E6571BST1
RES SMD 6.57K OHM 0.1% 5/8W 0805
[Vishay Thin Film](#)

RFQ



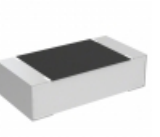
PHP00805H1180BST1
RES SMD 118 OHM 0.1% 5/8W 0805
[Vishay Thin Film](#)

RFQ



PWR4525W33R0J
RES SMD 33 OHM 5% 2W 4525
[Bourns Inc.](#)

RFQ



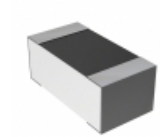
TNPU0603165RBZEN00
RES SMD 165 OHM 0.1% 1/10W 0603
[Vishay Dale](#)

RFQ



S5-100RJ2
RES SMD 100 OHM 5% 4W 8230
[Riedon](#)

RFQ



RN73C1J36R5BTG
RES SMD 36.5 OHM 0.1% 1/16W 0603
[TE Connectivity Passive Product](#)

RFQ



RG1005V-8060-W-T1
RES SMD 806 OHM 0.05% 1/16W 0402
[Susumu](#)

RFQ

