

MAX6307UK39D4-T



[Maxim Integrated](#)

IC PROGRAM 3.900V RESET SOT23-5

Contains lead / RoHS non-compliant

Integrated Circuits (ICs)

[1.MAX6307UK39D4-T.pdf](#)

[2.MAX6307UK39D4-T.pdf](#)

Buy Now

part#MAX6307UK39D4-T is available, see description of MAX6307UK39D4-T as below

use the request quote form to request MAX6307UK39D4-T price and lead time.
Buy Electronic Components at zeanoit.com .we are an independent distributor of electronic components with extensive inventory in stock.

The price and lead time for MAX6307UK39D4-T depending on the quantity required, availability and warehouse location.Contact us today and our sales team will send you quotation soon.

Email: sales@zeanoit.com

Shopping Process

1

Confirm the product

2

submit the order

3

payment

4

wait for delivery

5

receive the goods

Specifications

Voltage - Threshold:	3.9V, Adj
Type:	Multi-Voltage Supervisor
Supplier Device Package:	SOT-23-5
Series:	-
Reset Timeout:	1.12 s Minimum
Reset:	Active Low
Packaging:	Tape & Reel (TR)
Package / Case:	SC-74A, SOT-753
Output:	Open Drain or Open Collector
Operating Temperature:	0°C ~ 70°C (TA)
Number of Voltages Monitored:	2
Mounting Type:	Surface Mount

Related products



MAX6307UK39D1-T

IC PROGRAM 3.900V RESET SOT23-5
[Maxim Integrated](#)

RFQ



MAX6307UK39D3-T

in stock
[MAXIM](#)

RFQ



MAX6307UK39D3-T

IC PROGRAM 3.900V RESET SOT23-5
[Maxim Integrated](#)

RFQ



MAX6307UK40D1-T

IC PROGRAM 4.000V RESET SOT23-5
[Maxim Integrated](#)

RFQ



MAX6307UK40D2-T

IC PROGRAM 4.000V RESET SOT23-5
[Maxim Integrated](#)

RFQ



MAX6307UK39D4-T

in stock
[MAXIM](#)

RFQ



MAX6307UK39D2-T

in stock
[MAXIM](#)

RFQ



MAX6307UK40D1-T

in stock
[MAXIM](#)

RFQ



MAX6307UK40D2-T

in stock
[MAXIM](#)

RFQ



MAX6307UK39D2-T

IC PROGRAM 3.900V RESET SOT23-5
[Maxim Integrated](#)

RFQ

Guess You May Looking For



RG1005P-8661-B-T1

RES SMD 8.66KOHM 0.1% 1/16W 0402
[Susumu](#)

RFQ



RG1608V-1820-C-T5

RES SMD 182 OHM 0.25% 1/10W 0603
[Susumu](#)

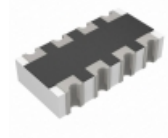
RFQ



RG3216V-2000-B-T1

RES SMD 200 OHM 0.1% 1/4W 1206
[Susumu](#)

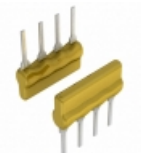
RFQ



TC124-FR-073K4L

RES ARRAY 4 RES 3.4K OHM 0804
[Yageo](#)

RFQ



4604X-102-560LF

RES ARRAY 2 RES 56 OHM 4SIP
[Bourns Inc.](#)

RFQ



AF122-FR-07887KL

RES ARRAY 2 RES 887K OHM 0404
[Yageo](#)

RFQ



4610X-AP1-561LF

RES ARRAY 9 RES 560 OHM 10SIP
[Bourns Inc.](#)

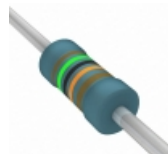
RFQ



Y1485V0313QT39W

RES NETWORK 2 RES MULT OHM 1610
[Vishay Foil Resistors \(Division of Vishay Precisio](#)

RFQ



SFR16S0001503FR500

RES 150K OHM 1/2W 1% AXIAL
[Vishay BC Components](#)

RFQ



CMF5511K000FEEB

RES 11K OHM 1/2W 1% AXIAL
[Vishay Dale](#)

RFQ