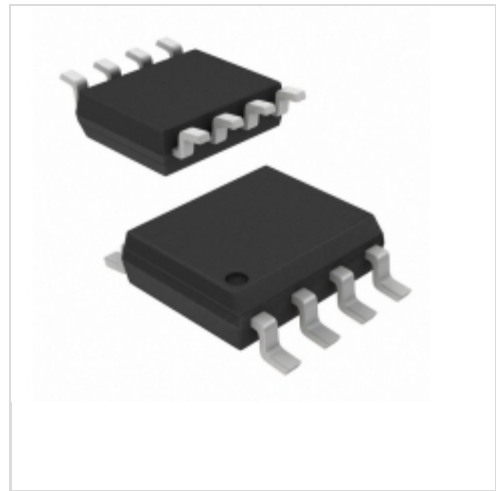


### MB85RS16NPNF-G-JNERE1



Fujitsu Electronics America, Inc.

IC FRAM 16KBIT 20MHZ 8SOP

Lead free / RoHS Compliant

Integrated Circuits (ICs)

[1.MB85RS16NPNF-G-JNERE1.pdf](#)

[2.MB85RS16NPNF-G-JNERE1.pdf](#)

**Buy Now**

**In Stock**

**628 pcs**

Minimum:1

Multiples:100

Manufacturer lead time 10 weeks

**PRICE**

1 pcs	\$1.18
10 pcs	\$1.075
25 pcs	\$1.046
50 pcs	\$1.041
100 pcs	\$0.93
250 pcs	\$0.927
500 pcs	\$0.914

part#MB85RS16NPNF-G-JNERE1 is available, see description of MB85RS16NPNF-G-JNERE1 as below .

use the request quote form to request MB85RS16NPNF-G-JNERE1 price and lead time. Buy Electronic Components at zeanoit.com .we are an independent distributor of electronic components with extensive inventory in stock.

The price and lead time for MB85RS16NPNF-G-JNERE1 depending on the quantity required, availability and warehouse location.Contact us today and our sales team will send you quotation soon.

Email: sales@zeanoit.com

### Shopping Process

**1**

**Confirm the product**

**2**

**submit the order**

**3**

**payment**

**4**

**wait for delivery**

**5**

**receive the goods**

### Specifications

<b>Voltage - Supply:</b>	2.7 V ~ 3.6 V
<b>Supplier Device Package:</b>	8-SOP
<b>Speed:</b>	20MHz
<b>Series:</b>	-
<b>Packaging:</b>	Original-Reel®
<b>Package / Case:</b>	8-SOIC (0.154", 3.90mm Width)
<b>Operating Temperature:</b>	-40°C ~ 85°C (TA)
<b>Memory Type:</b>	Non-Volatile
<b>Memory Size:</b>	16Kb (2K x 8)
<b>Memory Format:</b>	FRAM
<b>Interface:</b>	SPI Serial

### Related products

**FUJITSU**

**MB85RS128APNF-G-JNERE1**  
FUJITSU

RFQ

**FUJITSU**

**MB85RS16PNF-G-JNERE**  
FUJITSU

RFQ



**MB85RS1MTPH-G-JNE1**  
IC FRAM 1MBIT 40MHZ 8DIP  
Fujitsu Electronics America, Inc.

RFQ



**MB85RS128BPNF-G-JNE1**  
IC FRAM 128KBIT 25MHZ 8SOP  
Fujitsu Electronics America, Inc.

RFQ



**MB85RS16PNF-G-JNERE1**  
IC FRAM 16KBIT 20MHZ 8SOP  
Fujitsu Electronics America, Inc.

RFQ

**FUJITSU**

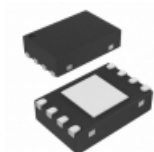
**MB85RS128BPNF-G-JNERE**  
FUJITSU

RFQ



**MB85RS128BPNF-G-JNERE1**  
IC FRAM 128KBIT 33MHZ 8SOP  
Fujitsu Electronics America, Inc.

RFQ



**MB85RS16NPN-G-AMEWE1**  
IC FRAM 16KBIT 20MHZ 8SON  
Fujitsu Electronics America, Inc.

RFQ

**FUJITSU**

**MB85RS16PNF-G-JNERE1.**  
FUJITSU

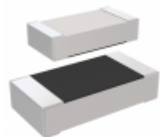
RFQ

**FUJITSU**

**MB85RS1MTPNF**  
FUJITSU

RFQ

### Guess You May Looking For



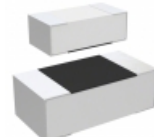
**RC3216F2800CS**  
RES SMD 280 OHM 1% 1/4W 1206  
Samsung Electro-Mechanics America, Inc.

RFQ



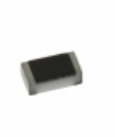
**RV0603FR-0764K9L**  
RES SMD 64.9K OHM 1% 1/10W 0603  
Yageo

RFQ



**CRGH0603F15R4**  
RES SMD 15.4 OHM 1% 1/5W 0603  
TE Connectivity Passive Product

RFQ



**CRCW04021M21FKTD**  
RES SMD 1.21M OHM 1% 1/16W 0402  
Vishay Dale

RFQ



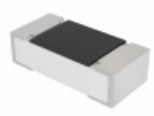
**RT0603DRE07442RL**  
RES SMD 442 OHM 0.5% 1/10W 0603  
Yageo

RFQ

**YAGEO**

**AA1206FR-07187RL**  
RES SMD 187 OHM 1% 1/4W 1206  
Yageo

RFQ



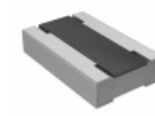
**CRCW040246K4FKEDHP**  
RES SMD 46.4K OHM 1% 1/5W 0402  
Vishay Dale

RFQ



**AT0805DRE07634RL**  
RES SMD 634 OHM 0.5% 1/8W 0805  
Yageo

RFQ



**RCL0406845KFKEA**  
RES SMD 845K OHM 1/4W 0604 WIDE  
Vishay Dale

RFQ



**ESR18EZPF2004**  
RES SMD 2M OHM 1% 1/3W 1206  
Rohm Semiconductor

RFQ