

MAX6855UK22D5+T

[Maxim Integrated](#)

IC MPU SUPERVISOR SOT23-5

Lead free / RoHS Compliant

Integrated Circuits (ICs)

[1.MAX6855UK22D5+T.pdf](#)
[2.MAX6855UK22D5+T.pdf](#)

We can supply Maxim Integrated MAX6855UK22D5+T, use the request quote form to request MAX6855UK22D5+T price, Maxim Integrated Datasheet PDF and lead time. Zeanoit.com is a professional electronic components distributor. With 3+ Million line items of available electronic components can ship in short lead-time, over 250 thousand part numbers of electronic components in stock for immediately delivery, which may include part number MAX6855UK22D5+T. The price and lead time for MAX6855UK22D5+T depending on the quantity required, availability and warehouse location.

Shopping Process

1

Confirm the product


2

submit the order


3

payment


4

wait for delivery


5

receive the goods

Specifications

Voltage - Threshold:	2.188V
Type:	Simple Reset/Power-On Reset
Supplier Device Package:	SOT-23-5
Series:	-
Reset Timeout:	300 ms Minimum
Reset:	Active High
Packaging:	Tape & Reel (TR)
Package / Case:	SC-74A, SOT-753
Output:	Push-Pull, Totem Pole
Operating Temperature:	-40°C ~ 85°C (TA)
Number of Voltages Monitored:	1
Mounting Type:	Surface Mount

Related products


MAX6855UK23D4+T
 IC MPU SUPERVISOR SOT23-5
[Maxim Integrated](#)

RFQ


MAX6855UK22D2+T
 IC MPU SUPERVISOR SOT23-5
[Maxim Integrated](#)

RFQ


MAX6855UK23D1+T
 IC MPU SUPERVISOR SOT23-5
[Maxim Integrated](#)

RFQ


MAX6855UK23D3+T
 IC MPU SUPERVISOR SOT23-5
[Maxim Integrated](#)

RFQ


MAX6855UK22D6+T
 IC MPU SUPERVISOR SOT23-5
[Maxim Integrated](#)

RFQ


MAX6855UK21D6+T
 IC MPU SUPERVISOR SOT23-5
[Maxim Integrated](#)

RFQ


MAX6855UK23D2+T
 IC MPU SUPERVISOR SOT23-5
[Maxim Integrated](#)

RFQ


MAX6855UK22D1+T
 IC MPU SUPERVISOR SOT23-5
[Maxim Integrated](#)

RFQ


MAX6855UK22D3+T
 IC MPU SUPERVISOR SOT23-5
[Maxim Integrated](#)

RFQ

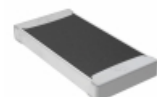

MAX6855UK22D4+T
 IC MPU SUPERVISOR SOT23-5
[Maxim Integrated](#)

RFQ

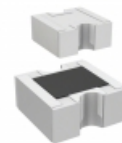
Guess You May Looking For


RG1005P-3652-W-T1
 RES SMD 36.5K OHM 1/16W 0402
[Susumu](#)

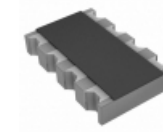
RFQ


TNPW20101K87BEEF
 RES SMD 1.87K OHM 0.1% 0.4W 2010
[Vishay Dale](#)

RFQ


RAVF102DJT100R
 RES ARRAY 2 RES 100 OHM 0404
[Stackpole Electronics Inc.](#)

RFQ


742C0836201FP
 RES ARRAY 4 RES 6.2K OHM 1206
[CTS Resistor Products](#)

RFQ


SM102032004FE
 RES 2M OHM 1W 1% RADIAL
[Ohmite](#)

RFQ


CMF554M0200FHEB
 RES 4.02M OHM 1/2W 1% AXIAL
[Vishay Dale](#)

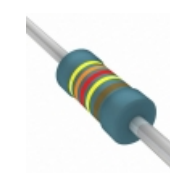
RFQ


43F680E
 RES 680 OHM 3W 1% AXIAL
[Ohmite](#)

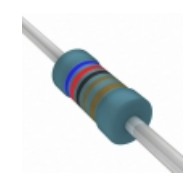
RFQ


ERG-1SJ160A
 RES 16 OHM 1W 5% AXIAL
[Panasonic Electronic Components](#)

RFQ


MBA02040C4324FRP00
 RES 4.32M OHM 0.4W 1% AXIAL
[Vishay BC Components](#)

RFQ


MBB02070C6201FC100
 RES 6.2K OHM 0.6W 1% AXIAL
[Vishay BC Components](#)

RFQ