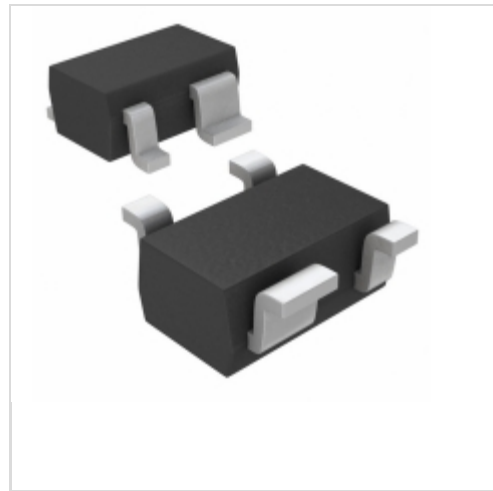


MAX6388XS33D2-T



Maxim Integrated

IC MPU/RESET CIRC 3.30V SC70-4
 Contains lead / RoHS non-compliant
 Integrated Circuits (ICs)

- [1.MAX6388XS33D2-T.pdf](#)
- [2.MAX6388XS33D2-T.pdf](#)

Buy Now

part#MAX6388XS33D2-T is available, see description of MAX6388XS33D2-T as below .
 use the request quote form to request MAX6388XS33D2-T price and lead time.
 Buy Electronic Components at zeanoit.com .we are an independent distributor of
 electronic components with extensive inventory in stock.
 The price and lead time for MAX6388XS33D2-T depending on the quantity required,
 availability and warehouse location.Contact us today and our sales team will send you
 quotation soon.
 Email: sales@zeanoit.com

Shopping Process

1

Confirm the product

2

submit the order

3

payment

4

wait for delivery

5

receive the goods

Specifications

| | |
|--------------------------------------|--------------------------|
| Voltage - Threshold: | 3.3V, Adj |
| Type: | Multi-Voltage Supervisor |
| Supplier Device Package: | SC-70-4 |
| Series: | - |
| Reset Timeout: | 20 ms Minimum |
| Reset: | Active High |
| Packaging: | Tape & Reel (TR) |
| Package / Case: | SC-82A, SOT-343 |
| Output: | Push-Pull, Totem Pole |
| Operating Temperature: | -40°C ~ 125°C (TA) |
| Number of Voltages Monitored: | 2 |
| Mounting Type: | Surface Mount |

Related products



MAX6388XS33D5-T
 IC MPU/RESET CIRC 3.30V SC70-4
[Maxim Integrated](#)

RFQ



MAX6388XS33D3-T
 IC MPU/RESET CIRC 3.30V SC70-4
[Maxim Integrated](#)

RFQ



MAX6388XS33D4-T
 in stock
[MAXIM](#)

RFQ



MAX6388XS32D7-T
 in stock
[MAXIM](#)

RFQ



MAX6388XS33D2-T
 in stock
[MAXIM](#)

RFQ



MAX6388XS33D3-T
 in stock
[MAXIM](#)

RFQ



MAX6388XS33D1-T
 IC MPU/RESET CIRC 3.30V SC70-4
[Maxim Integrated](#)

RFQ



MAX6388XS32D7-T
 IC MPU/RESET CIRC 3.20V SC70-4
[Maxim Integrated](#)

RFQ



MAX6388XS33D1-T
 in stock
[MAXIM](#)

RFQ



MAX6388XS33D4-T
 IC MPU/RESET CIRC 3.30V SC70-4
[Maxim Integrated](#)

RFQ

Guess You May Looking For



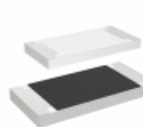
9T12062A1962FBHFT
 RES SMD 19.6K OHM 1% 1/8W 1206
[Yageo](#)

RFQ



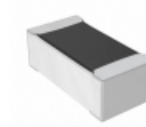
RG3216P-8200-W-T1
 RES SMD 820 OHM 0.05% 1/4W 1206
[Susumu](#)

RFQ



CRF2512-FX-R007ELF
 RES SMD 0.007 OHM 1% 2W 2512
[Bourns Inc.](#)

RFQ



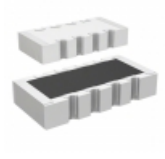
PCF0603PR-39RBT1
 RES SMD 39 OHM 0.1% 1/16W 0603
[TT Electronics/Welwyn](#)

RFQ



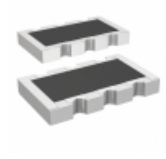
VSSR1603100GUF
 RES ARRAY 8 RES 10 OHM 16SSOP
[Vishay Thin Film](#)

RFQ



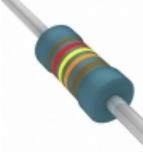
CAY16-5492F4LF
 RES ARRAY 4 RES 54.9K OHM 1206
[Bourns Inc.](#)

RFQ



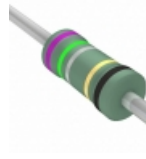
RAVF324DJT470K
 RES ARRAY 4 RES 470K OHM 2012
[Stackpole Electronics Inc.](#)

RFQ



MRS25000C1243FRP00
 RES 124K OHM 0.6W 1% AXIAL
[Vishay BC Components](#)

RFQ



NKN1WSJR-52-0R75
 RES 0.75 OHM 1W 5% AXIAL
[Yageo](#)

RFQ



CMF55240R00FHEK
 RES 240 OHM 1/2W 1% AXIAL
[Vishay Dale](#)

RFQ