

## MIC2560-1YWM-TR



### Microchip Technology

IC PCMCIA CARD SW MATRIX 16-SOIC

Lead free / RoHS Compliant

Integrated Circuits (ICs)

[MIC2560-1YWM-TR.pdf](#)

[Buy Now](#)

#### Out Stock

0 pcs

Minimum:1

Multiples:100

Manufacturer lead time 10 weeks

We can supply MIC2560-1YWM-TR, use the request quote form to request MIC2560-1YWM-TR price and lead time. Zeano is a professional electronic components distributor. With 3+ Million line items of available electronic components can ship in short lead-time, over 250 thousand part numbers of electronic components in stock for immediately delivery, which may include part number MIC2560-1YWM-TR. The price and lead time for MIC2560-1YWM-TR depending on the quantity required and warehouse location. Contact us and our sales representative will provide you price. We look forward to work with you.

### Shopping Process

1

Confirm the product

2

submit the order

3

payment

4

wait for delivery

5

receive the goods

### Specifications

<b>Voltage - Supply (Vcc/Vdd):</b>	Not Required
<b>Voltage - Load:</b>	3.3V, 5V, 12V
<b>Switch Type:</b>	PCMCIA Switch
<b>Supplier Device Package:</b>	16-SOIC
<b>Series:</b>	-
<b>Rds On (Typ):</b>	550 mOhm
<b>Ratio - Input:Output:</b>	3:2
<b>Packaging:</b>	Tape & Reel (TR)
<b>Package / Case:</b>	16-SOIC (0.295", 7.50mm Width)
<b>Output Type:</b>	N-Channel
<b>Output Configuration:</b>	Low Side
<b>Operating Temperature:</b>	-40°C ~ 85°C (TA)
<b>Number of Outputs:</b>	2
<b>Interface:</b>	Logic
<b>Input Type:</b>	Non-Inverting
<b>Features:</b>	Status Flag
<b>Fault Protection:</b>	Current Limiting (Fixed), Over Temperature
<b>Current - Output (Max):</b>	200mA

### Related products



#### MIC2561-0YM

IC PCMCIA CARD SW MATRIX 14-SOIC  
[Microchip Technology](#)

RFQ



#### MIC2560-1BWM TR

IC PCMCIA CARD SW MATRIX 16-SOIC  
[Microchip Technology](#)

RFQ



#### MIC2560-OBWM

[MICREL](#)

RFQ



#### MIC2560-0YWM

IC PCMCIA CARD SW MATRIX 16-SOIC  
[Microchip Technology](#)

RFQ



#### MIC2561-0BM-TR

IC PCMCIA CARD SW MATRIX 14-SOIC  
[Microchip Technology](#)

RFQ



#### MIC2561-0BM

IC PCMCIA CARD SW MATRIX 14-SOIC  
[Microchip Technology](#)

RFQ



#### MIC2560-0YWM-TR

IC PCMCIA CARD SW MATRIX 16-SOIC  
[Microchip Technology](#)

RFQ



#### MIC2560-1YWM

IC PCMCIA CARD SW MATRIX 16-SOIC  
[Microchip Technology](#)

RFQ



#### MIC2560-1BWM

IC PCMCIA CARD SW MATRIX 16-SOIC  
[Microchip Technology](#)

RFQ

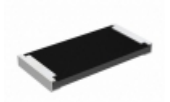


#### MIC2560-1YWMTR

[ON](#)

RFQ

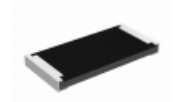
### Guess You May Looking For



#### RCP2512B120RJEC

RES SMD 120 OHM 5% 22W 2512  
[Vishay Dale](#)

RFQ



#### RCP2512B12R0GEC

RES SMD 12 OHM 2% 22W 2512  
[Vishay Dale](#)

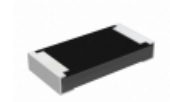
RFQ



#### M55342K02B54B2RT5

RES SMD 54.2K OHM 0.1% 1/8W 0505  
[Vishay Dale](#)

RFQ



#### RCP1206B33R0GWB

RES SMD 33 OHM 2% 11W 1206  
[Vishay Dale](#)

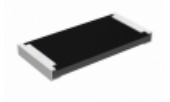
RFQ



#### RCP2512W180RGET

RES SMD 180 OHM 2% 22W 2512  
[Vishay Dale](#)

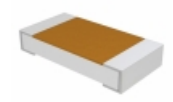
RFQ



#### RCP2512B16R0JWB

RES SMD 16 OHM 5% 22W 2512  
[Vishay Dale](#)

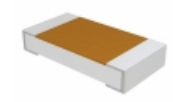
RFQ



#### D55342E07B287BRWS

RES SMD 287K OHM 0.1% 1/4W 1206  
[Vishay Dale](#)

RFQ



#### D55342E07B101ARWS

RES SMD 101 OHM 0.1% 1/4W 1206  
[Vishay Dale](#)

RFQ



#### M55342K06B64B9RWS

RES SMD 64.9KOHM 0.1% 0.15W 0805  
[Vishay Dale](#)

RFQ



#### M55342K12B61B2RWS

RES SMD 61.2KOHM 0.1% 1/10W 0603  
[Vishay Dale](#)

RFQ

