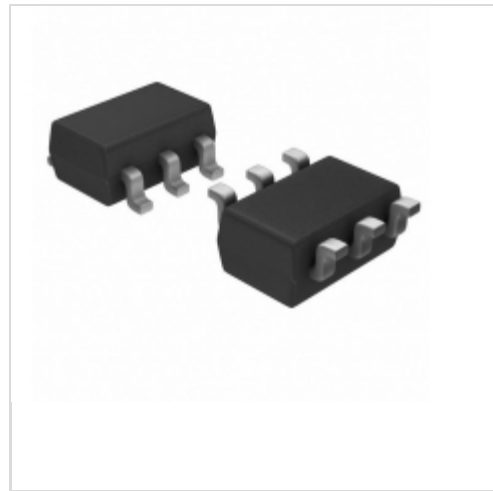


**MAX6360SWUT+T**


[Maxim Integrated](#)  
 IC SUPERVISOR MPU SOT23-6  
 Lead free / RoHS Compliant  
 Integrated Circuits (ICs)

- [1.MAX6360SWUT+T.pdf](#)
- [2.MAX6360SWUT+T.pdf](#)

**Buy Now**

We can supply Maxim Integrated MAX6360SWUT+T, use the request quote form to request MAX6360SWUT+T price, Maxim Integrated Datasheet PDF and lead time. Zeanoit.com is a professional electronic components distributor. With 3+ Million line items of available electronic components can ship in short lead-time, over 250 thousand part numbers of electronic components in stock for immediately delivery, which may include part number MAX6360SWUT+T. The price and lead time for MAX6360SWUT+T depending on the quantity required, availability and warehouse location.

**Shopping Process**

**1**

Confirm the product

**2**

submit the order

**3**

payment

**4**

wait for delivery

**5**

receive the goods

**Specifications**

<b>Voltage - Threshold:</b>	1.67V, 2.93V
<b>Type:</b>	Multi-Voltage Supervisor
<b>Supplier Device Package:</b>	SOT-23-6
<b>Series:</b>	-
<b>Reset Timeout:</b>	100 ms Minimum
<b>Reset:</b>	Active Low
<b>Packaging:</b>	Tape & Reel (TR)
<b>Package / Case:</b>	SOT-23-6
<b>Output:</b>	Push-Pull, Totem Pole
<b>Operating Temperature:</b>	-40°C ~ 85°C (TA)
<b>Number of Voltages Monitored:</b>	2
<b>Mounting Type:</b>	Surface Mount

**Related products**


**MAX6360MSUK-T**  
in stock  
[MAXIM](#)

RFQ



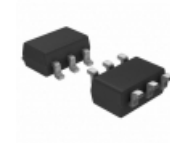
**MAX6360MSUT-T**  
in stock  
[MAXIM](#)

RFQ



**MAX6360MTUT-T**  
in stock  
[MAXIM](#)

RFQ



**MAX6360SYUT+T**  
IC SUPERVISOR MPU SOT23-6  
[Maxim Integrated](#)

RFQ



**MAX6360SYUK-T**  
in stock  
[MAXIM](#)

RFQ



**MAX6360SVUT+T**  
IC SUPERVISOR MPU SOT23-6  
[Maxim Integrated](#)

RFQ



**MAX6360TWUT+T**  
IC SUPERVISOR MPU SOT23-6  
[Maxim Integrated](#)

RFQ



**MAX6360TYUK-T**  
in stock  
[MAXIM](#)

RFQ



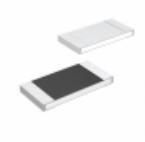
**MAX6360SYUT-T**  
in stock  
[MAXIM](#)

RFQ



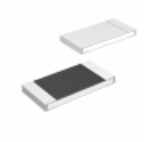
**MAX6360MTUK-T**  
in stock  
[MAXIM](#)

RFQ

**Guess You May Looking For**


**MCR01MZPJ201**  
RES SMD 200 OHM 5% 1/16W 0402  
[Rohm Semiconductor](#)

RFQ



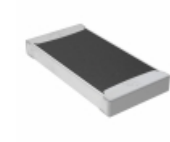
**MCR01MZPJ820**  
RES SMD 82 OHM 5% 1/16W 0402  
[Rohm Semiconductor](#)

RFQ



**RG3216N-2322-C-T5**  
RES SMD 23.2KOHM 0.25% 1/4W 1206  
[Susumu](#)

RFQ



**TNPW20105K60BEEY**  
RES SMD 5.6K OHM 0.1% 0.4W 2010  
[Vishay Dale](#)

RFQ



**MCR25JZHf6812**  
RES SMD 68.1K OHM 1% 1/4W 1210  
[Rohm Semiconductor](#)

RFQ



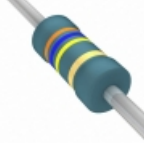
**766141473GPTR13**  
RES ARRAY 13 RES 47K OHM 14SOIC  
[CTS Resistor Products](#)

RFQ



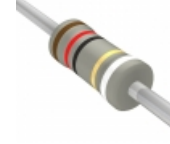
**766143101G**  
RES ARRAY 7 RES 100 OHM 14SOIC  
[CTS Resistor Products](#)

RFQ



**SFR25H0003603JR500**  
RES 360K OHM 1/2W 5% AXIAL  
[Vishay BC Components](#)

RFQ



**FRM200JR-73-220R**  
RES 220 OHM 2W 5% AXIAL  
[Yageo](#)

RFQ



**RSMF3JT8K20**  
RES 8.2K OHM 3W 5% AXIAL  
[Stackpole Electronics Inc.](#)

RFQ