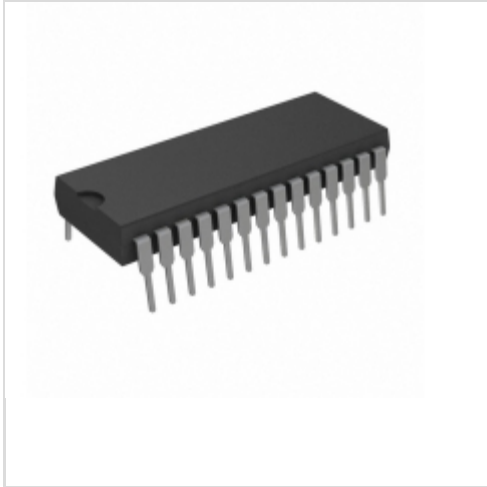


AT28C17-20PC

Microchip Technology

IC EEPROM 16KBIT 200NS 28DIP
 Contains lead / RoHS non-compliant
 Integrated Circuits (ICs)

[AT28C17-20PC.pdf](#)

Buy Now

part#AT28C17-20PC is available, see description of AT28C17-20PC as below .
 use the request quote form to request AT28C17-20PC price and lead time.
 Buy Electronic Components at zeanoit.com .we are an independent distributor of
 electronic components with extensive inventory in stock.
 The price and lead time for AT28C17-20PC depending on the quantity required,
 availability and warehouse location.Contact us today and our sales team will send you
 quotation soon.
 Email: sales@zeanoit.com

Shopping Process

1

Confirm the product

2

submit the order

3

payment

4

wait for delivery

5

receive the goods

Specifications

Voltage - Supply:	4.5 V ~ 5.5 V
Supplier Device Package:	28-PDIP
Speed:	200ns
Series:	-
Packaging:	Tube
Package / Case:	28-DIP (0.600", 15.24mm)
Operating Temperature:	0°C ~ 70°C (TC)
Memory Type:	Non-Volatile
Memory Size:	16Kb (2K x 8)
Memory Format:	EEPROM
Interface:	Parallel

Related products


AT28C17-20JC
 IC EEPROM 16KBIT 200NS 32PLCC
[Microchip Technology](#)

RFQ



AT28C17-20DI
 in stock
[ATMEL](#)

RFQ



AT28C17-20JI
 IC EEPROM 16KBIT 200NS 32PLCC
[Microchip Technology](#)

RFQ



AT28C17-W
 in stock
[ATMEL](#)

RFQ



AT28C17-20SC
 IC EEPROM 16KBIT 200NS 28SOIC
[Microchip Technology](#)

RFQ



AT28C17-20SI
 IC EEPROM 16KBIT 200NS 28SOIC
[Microchip Technology](#)

RFQ



AT28C17-20JI
 in stock
[ATMEL](#)

RFQ



AT28C17-20JC
 in stock
[ATMEL](#)

RFQ



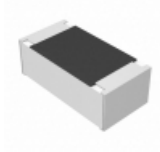
AT28C17-20PI
 IC EEPROM 16KBIT 200NS 28DIP
[Microchip Technology](#)

RFQ



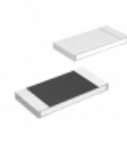
AT28C17-25DC
 in stock
[ATMEL](#)

RFQ

Guess You May Looking For


ERA-2AEB49R9X
 RES SMD 49.9 OHM 0.1% 1/16W 0402
[Panasonic Electronic Components](#)

RFQ



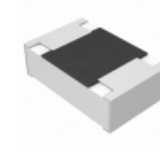
MCR50JZHf82R5
 RES SMD 82.5 OHM 1% 1/2W 2010
[Rohm Semiconductor](#)

RFQ



RC0603DR-073K9L
 RES SMD 3.9K OHM 0.5% 1/10W 0603
[Yageo](#)

RFQ



ERJ-T06J3R3V
 RES SMD 3.3 OHM 5% 1/4W 0805
[Panasonic Electronic Components](#)

RFQ



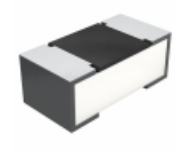
RT0402BRD07200KL
 RES SMD 200K OHM 0.1% 1/16W 0402
[Yageo](#)

RFQ



RG1005P-2612-D-T10
 RES SMD 26.1KOHM 0.5% 1/16W 0402
[Susumu](#)

RFQ



CRCW02012M21FNED
 RES SMD 2.21M OHM 1% 1/20W 0201
[Vishay Dale](#)

RFQ



RNCf0402DKE165R
 RES SMD 165 OHM 0.5% 1/16W 0402
[Stackpole Electronics Inc.](#)

RFQ



RNCf1206DTC1R80
 RES SMD 1.8 OHM 0.5% 1/4W 1206
[Stackpole Electronics Inc.](#)

RFQ



RT0805CRD073R48L
 RES SMD 3.48 OHM 0.25% 1/8W 0805
[Yageo](#)

RFQ