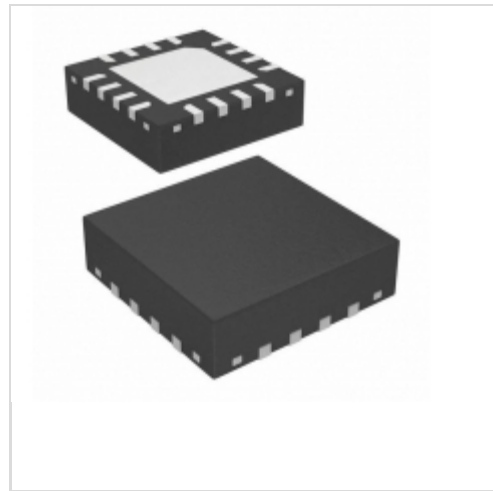


## RT8462ZQW



**Richtek**

IC LED DRIVER CTRLR DIM 16WQFN

Lead free / RoHS Compliant

Integrated Circuits (ICs)

[RT8462ZQW.pdf](#)

**Buy Now**

**Out Stock**

**0 pcs**

Minimum:1

Multiples:100

Manufacturer lead time 10 weeks

### PRICE

1500 pcs	\$0.643
3000 pcs	\$0.60
7500 pcs	\$0.57
10500 pcs	\$0.548

part#RT8462ZQW is available, see description of RT8462ZQW as below .  
use the request quote form to request RT8462ZQW price and lead time.  
Buy Electronic Components at zeanoit.com .we are an independent distributor of electronic components with extensive inventory in stock.  
The price and lead time for RT8462ZQW depending on the quantity required, availability and warehouse location.Contact us today and our sales team will send you quotation soon.  
Email: sales@zeanoit.com

## Shopping Process

**1**

**Confirm the product**

**2**

**submit the order**

**3**

**payment**

**4**

**wait for delivery**

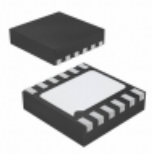
**5**

**receive the goods**

## Specifications

<b>Voltage - Supply (Min):</b>	4.5V
<b>Voltage - Supply (Max):</b>	36V
<b>Voltage - Output:</b>	-
<b>Type:</b>	DC DC Controller
<b>Topology:</b>	Step-Down (Buck), Step-Up (Boost)
<b>Supplier Device Package:</b>	16-WQFN (3x3)
<b>Series:</b>	-
<b>Packaging:</b>	Tape & Reel (TR)
<b>Package / Case:</b>	16-WFQFN Exposed Pad
<b>Operating Temperature:</b>	-40°C ~ 125°C (TJ)
<b>Number of Outputs:</b>	1
<b>Mounting Type:</b>	Surface Mount
<b>Internal Switch(s):</b>	No
<b>Frequency:</b>	100kHz ~ 1MHz
<b>Dimming:</b>	Analog, PWM
<b>Current - Output / Channel:</b>	-
<b>Applications:</b>	Backlight, Lighting

## Related products

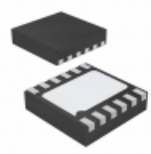


**RT8463ZQW**

IC LED DRVR RGLTR DIM 2A 12WDFN

[Richtek USA Inc.](#)

[RFQ](#)



**RT8463GQW**

IC LED DRVR DIM 12WDFN

[Richtek USA Inc.](#)

[RFQ](#)

**RICHTEK**  
your power partner.

**RT8458DGJ6**

[RICHTEK](#)

[RFQ](#)



**RT8458GJ6**

IC LED DRIVER OFFL DIM TSOT23-6

[Richtek USA Inc.](#)

[RFQ](#)



**RT8462GS**

IC LED DRIVER CTRLR DIM 14SOP

[Richtek USA Inc.](#)

[RFQ](#)



**RT8465ZS**

IC LED DRIVER OFFL SWITCHER 8SOP

[Richtek USA Inc.](#)

[RFQ](#)

**RICHTEK**  
your power partner.

**RT8463GCP**

[RICHTEK](#)

[RFQ](#)

**RICHTEK**  
your power partner.

**RT8465ZS SOP8**

[RICHTEK](#)

[RFQ](#)

**RICHTEK**  
your power partner.

**RT8458CGJ6**

[RICHTEK](#)

[RFQ](#)

**RICHTEK**  
your power partner.

**RT8458EGJ6**

[RICHTEK](#)

[RFQ](#)

## Guess You May Looking For

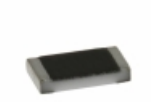


**RT0805WRC07619RL**

RES SMD 619 OHM 0.05% 1/8W 0805

[Yageo](#)

[RFQ](#)

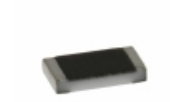


**TNPW08056K34BEEN**

RES SMD 6.34K OHM 0.1% 1/8W 0805

[Vishay Dale](#)

[RFQ](#)



**TNPW0805332KBEEN**

RES SMD 332K OHM 0.1% 1/8W 0805

[Vishay Dale](#)

[RFQ](#)

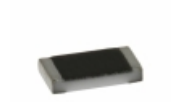


**RT2512CKB0773R2L**

RES SMD 73.2 OHM 0.25% 3/4W 2512

[Yageo](#)

[RFQ](#)



**TNPW0805806KBEEN**

RES SMD 806K OHM 0.1% 1/8W 0805

[Vishay Dale](#)

[RFQ](#)



**TNPW121084K5BEEA**

RES SMD 84.5K OHM 0.1% 1/3W 1210

[Vishay Dale](#)

[RFQ](#)



**RT1206WRD0711R8L**

RES SMD 11.8 OHM 0.05% 1/4W 1206

[Yageo](#)

[RFQ](#)



**RT1206WRD076K98L**

RES SMD 6.98KOHM 0.05% 1/4W 1206

[Yageo](#)

[RFQ](#)



**RT0603WRB07182RL**

RES SMD 182 OHM 0.05% 1/10W 0603

[Yageo](#)

[RFQ](#)



**SM6227JTR430**

RES SMD 0.43 OHM 5% 3W 6227

[Stackpole Electronics Inc.](#)

[RFQ](#)

