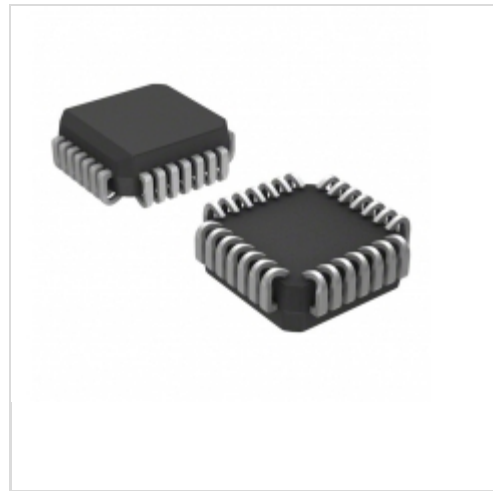


A6812EEPTR-T



Allegro MicroSystems, LLC.
 IC SOURCE DRVR 20BIT SER 28PLCC
 Lead free / RoHS Compliant
 Integrated Circuits (ICs)

[A6812EEPTR-T.pdf](#)

Buy Now

Images are for reference only.

See Product Specifications for product details.

If you are interested to buy A6812EEPTR-T, Just Email us.

Sales@zeanoit.com

our sales team will reply you within 24 hours

Shopping Process

1

Confirm the product

2

submit the order

3

payment

4

wait for delivery

5

receive the goods

Specifications

Voltage - Supply (Vcc/Vdd):	3 V ~ 5.5 V
Voltage - Load:	60V (Max)
Switch Type:	Latched Driver
Supplier Device Package:	28-PLCC (11.51x11.51)
Series:	-
Rds On (Typ):	-
Ratio - Input:Output:	1:20
Packaging:	Tape & Reel (TR)
Package / Case:	28-LCC (J-Lead)
Output Type:	Bipolar
Output Configuration:	High Side
Operating Temperature:	-40°C ~ 85°C (TA)
Number of Outputs:	20
Interface:	Strobe, Serial
Input Type:	Non-Inverting
Features:	-
Fault Protection:	-
Current - Output (Max):	40mA

Related products



A6812EEPTR
 IC SOURCE DRVR 20BIT SER 28PLCC
 Allegro MicroSystems, LLC

RFQ



A6812EEP
 IC SOURCE DRVR 20BIT SER 28PLCC
 Allegro MicroSystems, LLC

RFQ



A6812KLWTR
 IC SOURCE DRVR 20BIT SER 28SOIC
 Allegro MicroSystems, LLC

RFQ



A6812ELWTR
 IC SOURCE DRVR 20BIT SER 28SOIC
 Allegro MicroSystems, LLC

RFQ



A6810SLWTR-T
 IC SOURCE DVR 10BIT SER 20SOIC
 Allegro MicroSystems, LLC

RFQ



A6812EEP-T
 IC SOURCE DRVR 20BIT SER 28PLCC
 Allegro MicroSystems, LLC

RFQ



A6812ELW-T
 IC SOURCE DRVR 20BIT SER 28SOIC
 Allegro MicroSystems, LLC

RFQ



A6812ELWTR-T
 IC SOURCE DRVR 20BIT SER 28SOIC
 Allegro MicroSystems, LLC

RFQ



A6812ELW
 IC SOURCE DRVR 20BIT SER 28SOIC
 Allegro MicroSystems, LLC

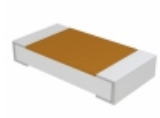
RFQ



A6812EA
 in stock
 ATMEL

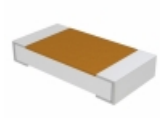
RFQ

Guess You May Looking For



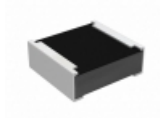
D55342E07B1F00RT5
 RES SMD 1M OHM 1% 1/4W 1206
 Vishay Dale

RFQ



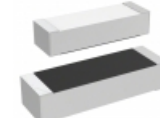
D55342H07B237ERT5
 RES SMD 237K OHM 1% 1/4W 1206
 Vishay Dale

RFQ



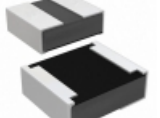
RCP0505B750RJS2
 RES SMD 750 OHM 5% 5W 0505
 Vishay Dale

RFQ



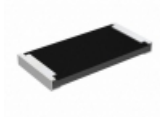
M55342E04B196ERT1
 RES SMD 196K OHM 1% 0.15W 1505
 Vishay Dale

RFQ



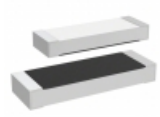
RCP0505W680RJED
 RES SMD 680 OHM 5% 5W 0505
 Vishay Dale

RFQ



RCP2512B240RGS6
 RES SMD 240 OHM 2% 22W 2512
 Vishay Dale

RFQ



M55342K05B2B67RWS
 RES SMD 2.67K OHM 0.225W 2208
 Vishay Dale

RFQ



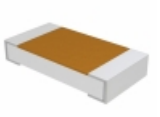
Y11211K00000A0L
 RES SMD 1K OHM 0.05% 1/4W J LEAD
 Vishay Foil Resistors (Division of Vishay
 Precisio

RFQ



Y149611K3000Q0W
 RES SMD 11.3K OHM 0.15W 1206
 Vishay Foil Resistors (Division of Vishay
 Precisio

RFQ



D55342K07B10B0RWI
 RES SMD 10K OHM 0.1% 1/4W 1206
 Vishay Dale

RFQ