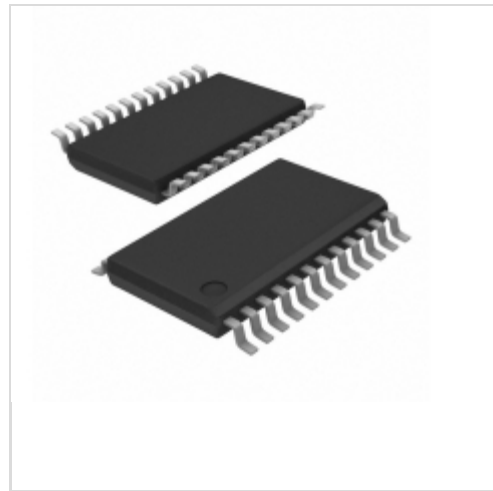


## STP16CPS05TTR



[STMicroelectronics](#)

IC LED DRIVER LIN 100MA 24TSSOP

Lead free / RoHS Compliant

Integrated Circuits (ICs)

[STP16CPS05TTR.pdf](#)

**Buy Now**

We can supply STMicroelectronics STP16CPS05TTR, use the request quote form to request STP16CPS05TTR price, STMicroelectronics Datasheet PDF and lead time. Zeanoit.com is a professional electronic components distributor. With 3+ Million line items of available electronic components can ship in short lead-time, over 250 thousand part numbers of electronic components in stock for immediately delivery, which may include part number STP16CPS05TTR. The price and lead time for STP16CPS05TTR depending on the quantity required, availability and warehouse location.

**Out Stock**

**0 pcs**

Minimum:1

Multiples:100

Manufacturer lead time 10 weeks

### PRICE

2500 pcs	\$0.763
5000 pcs	\$0.735
12500 pcs	\$0.706

## Shopping Process

1

Confirm the product

2

submit the order

3

payment

4

wait for delivery

5

receive the goods

## Specifications

<b>Voltage - Supply (Min):</b>	3V
<b>Voltage - Supply (Max):</b>	5.5V
<b>Voltage - Output:</b>	20V
<b>Type:</b>	Linear
<b>Topology:</b>	Shift Register
<b>Supplier Device Package:</b>	24-TSSOP
<b>Series:</b>	-
<b>Packaging:</b>	Tape & Reel (TR)
<b>Package / Case:</b>	24-TSSOP (0.173", 4.40mm Width)
<b>Operating Temperature:</b>	-40°C ~ 125°C (TA)
<b>Number of Outputs:</b>	16
<b>Mounting Type:</b>	Surface Mount
<b>Internal Switch(s):</b>	Yes
<b>Frequency:</b>	30MHz
<b>Dimming:</b>	-
<b>Current - Output / Channel:</b>	100mA
<b>Applications:</b>	-

## Related products



**STP16CPS05**

in stock  
[ST](#)

RFQ



**STP16CPS05PTR**

IC LED DRIVER LIN 100MA 24QSOP  
[STMicroelectronics](#)

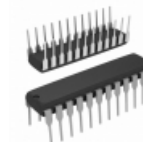
RFQ



**STP16CPS05MTR**

IC LED DRIVER LINEAR 100MA 24SOP  
[STMicroelectronics](#)

RFQ



**STP16CPS05B1R**

IC LED DRIVER LINEAR 100MA 24DIP  
[STMicroelectronics](#)

RFQ



**STP16DP05B1R**

IC LED DRIVER LINEAR 100MA 24DIP  
[STMicroelectronics](#)

RFQ



**STP16DP05PTR**

IC LED DRIVER LIN 100MA 24QSOP  
[STMicroelectronics](#)

RFQ



**STP16CPS05M**

IC LED DRIVER LINEAR 100MA 24SOP  
[STMicroelectronics](#)

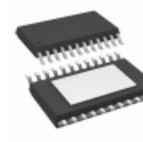
RFQ



**STP16DP05MTR**

IC LED DRIVER LINEAR 100MA 24SOP  
[STMicroelectronics](#)

RFQ



**STP16CPS05XTTR**

IC LED DRIVER LIN 100MA 24TSSOP  
[STMicroelectronics](#)

RFQ



**STP16DP05**

[ST](#)

RFQ

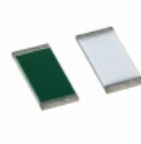
## Guess You May Looking For



**RT0805WRC0715KL**

RES SMD 15K OHM 0.05% 1/8W 0805  
[Yageo](#)

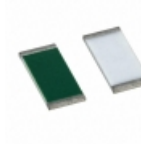
RFQ



**PAT0603E2641BST1**

RES SMD 2.64KOHM 0.1% 0.15W 0603  
[Vishay Thin Film](#)

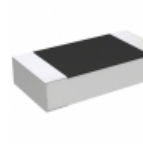
RFQ



**PAT0805E2150BST1**

RES SMD 215 OHM 0.1% 1/5W 0805  
[Vishay Thin Film](#)

RFQ



**RP73D2B46R4BTDF**

RES SMD 46.4 OHM 0.1% 1/4W 1206  
[TE Connectivity Passive Product](#)

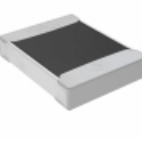
RFQ



**HRG3216P-3161-B-T1**

RES SMD 3.16K OHM 0.1% 1W 1206  
[Susumu](#)

RFQ



**TNPW1210169RBETA**

RES SMD 169 OHM 0.1% 1/3W 1210  
[Vishay Dale](#)

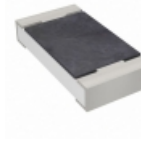
RFQ



**RG2012V-2800-D-T5**

RES SMD 280 OHM 0.5% 1/8W 0805  
[Susumu](#)

RFQ



**RT1206WRD07348RL**

RES SMD 348 OHM 0.05% 1/4W 1206  
[Yageo](#)

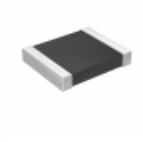
RFQ



**RT0805WRB0782KL**

RES SMD 82K OHM 0.05% 1/8W 0805  
[Yageo](#)

RFQ



**RT1210WRB0724K9L**

RES SMD 24.9KOHM 0.05% 1/4W 1210  
[Yageo](#)

RFQ

