

MAX6316LUK46CZ+



Maxim Integrated

IC SUPERVISOR MPU SOT23-5

Lead free / RoHS Compliant

Integrated Circuits (ICs)

[MAX6316LUK46CZ+.pdf](#)

Buy Now

We can supply Maxim Integrated MAX6316LUK46CZ+, use the request quote form to request MAX6316LUK46CZ+ price, Maxim Integrated Datasheet PDF and lead time. Zeanoit.com is a professional electronic components distributor. With 3+ Million line items of available electronic components can ship in short lead-time, over 250 thousand part numbers of electronic components in stock for immediately delivery, which may include part number MAX6316LUK46CZ+. The price and lead time for MAX6316LUK46CZ+ depending on the quantity required, availability and warehouse location.

In Stock

350 pcs

Minimum:1

Multiples:100

Manufacturer lead time 10 weeks

PRICE

1 pcs	\$5.49
10 pcs	\$5.18
25 pcs	\$4.14
50 pcs	\$3.93
100 pcs	\$3.62
250 pcs	\$3.44
500 pcs	\$2.59

Shopping Process

1

Confirm the product

2

submit the order

3

payment

4

wait for delivery

5

receive the goods

Specifications

Voltage - Threshold:	4.63V
Type:	Simple Reset/Power-On Reset
Supplier Device Package:	SOT-23-5
Series:	-
Reset Timeout:	140 ms Minimum
Reset:	Active Low
Packaging:	Cut Strip
Package / Case:	SC-74A, SOT-753
Output:	Push-Pull, Totem Pole
Operating Temperature:	-40°C ~ 125°C (TA)
Number of Voltages Monitored:	1
Mounting Type:	Surface Mount

Related products



MAX6316LUK46CY+T
IC MPU/RESET CIRC 4.63V SOT23-5
[Maxim Integrated](#)

RFQ



MAX6316LUK46BX+
IC MPU/RESET CIRC 4.70V SOT23-5
[Maxim Integrated](#)

RFQ



MAX6316LUK47CZ+T
IC SUPERVISOR MPU SOT23-5
[Maxim Integrated](#)

RFQ



MAX6316M
in stock
[MAXIM](#)

RFQ



MAX6316MUK29CY
in stock
[MAXIM](#)

RFQ



MAX6316LUK46CX-T
IC MPU/RESET CIRC 4.63V SOT23-5
[Maxim Integrated](#)

RFQ



MAX6316LUK46CZ-T
IC MPU/RESET CIRC 4.63V SOT23-5
[Maxim Integrated](#)

RFQ



MAX6316LUK46BY-T
IC MPU/RESET CIRC 4.63V SOT23-5
[Maxim Integrated](#)

RFQ



MAX6316LUK47BY/V+T
IC MPU/RESET CIRC
[Maxim Integrated](#)

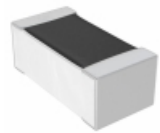
RFQ



MAX6316LUK46BX-T
IC MPU/RESET CIRC 4.63V SOT23-5
[Maxim Integrated](#)

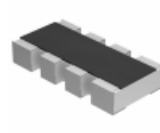
RFQ

Guess You May Looking For



RGH1608-2C-P-104-B
RES SMD 100K OHM 0.1% 1/6W 0603
[Susumu](#)

RFQ



CRA04S083750RJTD
RES ARRAY 4 RES 750 OHM 0804
[Vishay Dale](#)

RFQ



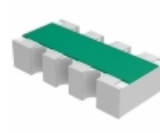
766143102GPTR13
RES ARRAY 7 RES 1K OHM 14SOIC
[CTS Resistor Products](#)

RFQ



Y1747V0198BA9W
RES ARRAY 4 RES MULT OHM 8SOIC
[Vishay Foil Resistors \(Division of Vishay Preciso\)](#)

RFQ



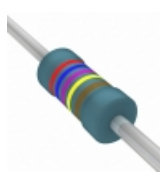
MNR04M0ABJ221
RES ARRAY 4 RES 220 OHM 0804
[Rohm Semiconductor](#)

RFQ



RNMF12FTD16R2
RES 16.2 OHM 1/2W 1% AXIAL
[Stackpole Electronics Inc.](#)

RFQ



MBA02040C2679FRP00
RES 26.7 OHM 0.4W 1% AXIAL
[Vishay BC Components](#)

RFQ



RN55C60R4FR36
RES 60.4 OHM 1/8W 1% AXIAL
[Vishay Dale](#)

RFQ



CMF202K5000GNEB
RES 2.5K OHM 1W 2% AXIAL
[Vishay Dale](#)

RFQ



RN60C6001DB14
RES 6K OHM 1/4W .5% AXIAL
[Vishay Dale](#)

RFQ