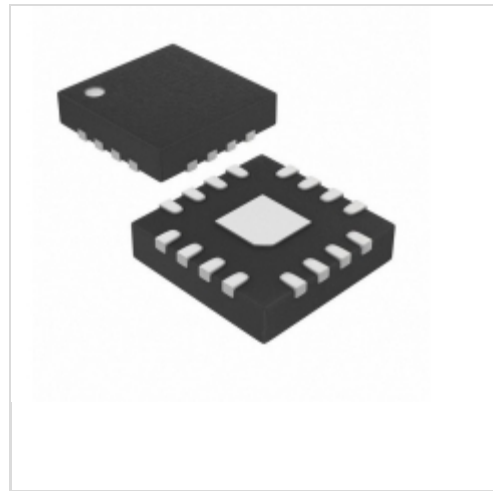


MAX16963SATEF/V+



Maxim Integrated

IC REG BUCK ADJ 1.5A DL SYNC QFN
Lead free / RoHS Compliant
Integrated Circuits (ICs)

- 1.MAX16963SATEF/V+.pdf
- 2.MAX16963SATEF/V+.pdf

Buy Now

Out Stock

0 pcs

Minimum:1

Multiples:100

Manufacturer lead time 10 weeks

part#MAX16963SATEF/V+ is available, see description of MAX16963SATEF/V+ as below .

use the request quote form to request MAX16963SATEF/V+ price and lead time.
Buy Electronic Components at zeanoit.com .we are an independent distributor of electronic components with extensive inventory in stock.

The price and lead time for MAX16963SATEF/V+ depending on the quantity required, availability and warehouse location.Contact us today and our sales team will send you quotation soon.

Email: sales@zeanoit.com

Shopping Process

1

Confirm the product

2

submit the order

3

payment

4

wait for delivery

5

receive the goods

Specifications

| | |
|--------------------------------------|----------------------|
| Voltage - Output (Min/Fixed): | 0.8V |
| Voltage - Output (Max): | 3.6V |
| Voltage - Input (Min): | 2.7V |
| Voltage - Input (Max): | 5.5V |
| Topology: | Buck |
| Synchronous Rectifier: | Yes |
| Supplier Device Package: | 16-TQFN (4x4) |
| Series: | Automotive, AEC-Q100 |
| Packaging: | Tube |
| Package / Case: | 16-WQFN Exposed Pad |
| Output Type: | Adjustable |
| Output Configuration: | Positive |
| Operating Temperature: | -40°C ~ 125°C (TJ) |
| Number of Outputs: | 2 |
| Mounting Type: | Surface Mount |
| Function: | Step-Down |
| Frequency - Switching: | 2.2MHz |
| Current - Output: | 1.5A |

Related products



MAX16969BGEE/V+

IC USB2.0 PROTECT 500MA-3A QSOP
Maxim Integrated

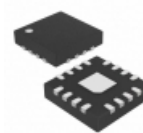
RFQ



MAX16969DGEE/V

MAXIM

RFQ



MAX16963SATED/V+

IC REG BUCK ADJ 1.5A DL SYNC QFN
Maxim Integrated

RFQ



MAX16963SATEA/V+T

MAXIM

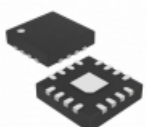
RFQ



MAX16969BGEE/V+T

IC USB2.0 PROTECT 500MA-3A QSOP
Maxim Integrated

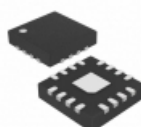
RFQ



MAX16963SATEF/V+T

IC REG BUCK ADJ 1.5A DL SYNC QFN
Maxim Integrated

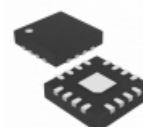
RFQ



MAX16963SATEC/V+T

IC REG BUCK ADJ 1.5A DL 16TQFN
Maxim Integrated

RFQ



MAX16963SATED/V+T

IC REG BUCK ADJ 1.5A DL SYNC QFN
Maxim Integrated

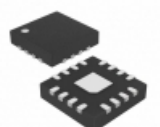
RFQ



MAX16969DGEE/V+

IC USB2.0 PROTECT 500MA-3A QSOP
Maxim Integrated

RFQ



MAX16963RATEA/V+T

IC REG BUCK ADJ 1.5A DL 16TQFN
Maxim Integrated

RFQ

Guess You May Looking For



ATS-11H-39-C1-R0

HEATSINK 57.9X60.96X5.84MM
Advanced Thermal Solutions Inc.

RFQ



QSS-025-01-L-D-LC

CONN RCPT 50POS DUAL .635MM SMD
Samtec Inc.

RFQ



BCS-123-L-D-TE-007

BOX CONNECTOR SOCKET STRIP
Samtec Inc.

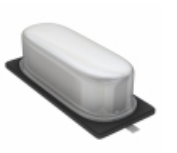
RFQ



0203153

TERM BLOCK INSERTION BRIDGE 2POS
Phoenix Contact

RFQ



ABLS2-30.000MHZ-B1U-T

CRYSTAL 30.000MHZ 18PF SMD
Abracon LLC

RFQ



SIT1602BC-13-25E-18.432000D

-20 TO 70C, 2520, 50PPM, 2.5V, 1
SITIME

RFQ



SIT1602BC-33-25E-75.000000Y

-20 TO 70C, 5032, 50PPM, 2.5V, 7
SITIME

RFQ



SIT1602BI-83-18N-60.000000Y

-40 TO 85C, 7050, 50PPM, 1.8V, 6
SITIME

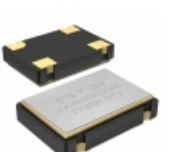
RFQ



PS-16SG-D4TS1-1E

CONN HEADER 16POS
JAE Electronics

RFQ



CB3LV-3C-12M2800

OSC XO 12.28MHZ HCMOS TTL SMD
CTS-Frequency Controls

RFQ

