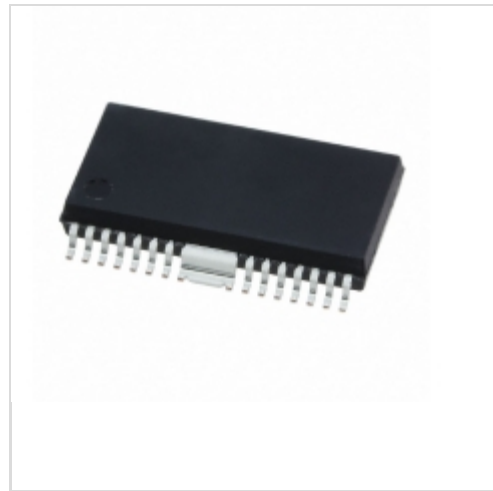


**LA6242H-TE-L-E**



[AMI Semiconductor / ON Semiconductor](#)

IC MOTOR DRIVER PAR 28HSOP

Lead free / RoHS Compliant

Integrated Circuits (ICs)

[LA6242H-TE-L-E.pdf](#)

**Buy Now**

We can supply AMI Semiconductor / ON Semiconductor LA6242H-TE-L-E, use the request quote form to request LA6242H-TE-L-E piece, AMI Semiconductor / ON Semiconductor Datasheet PDF and lead time. Zeanoit.com is a professional electronic components distributor. With 3+ Million line items of available electronic components can ship in short lead-time, over 250 thousand part numbers of electronic components in stock for immediately delivery, which may include part number LA6242H-TE-L-E. The price and lead time for LA6242H-TE-L-E depending on the quantity required, availability and warehouse location.

**Out Stock**

**0 pcs**

Minimum:1

Multiples:100

Manufacturer lead time 10 weeks

Shopping Process

**1**

**Confirm the product**

**2**

**submit the order**

**3**

**payment**

**4**

**wait for delivery**

**5**

**receive the goods**

Specifications

<b>Voltage - Supply:</b>	5 V ~ 13 V
<b>Voltage - Load:</b>	5 V ~ 13 V
<b>Technology:</b>	Bipolar
<b>Supplier Device Package:</b>	28-HSOPHC (15.2x7.9)
<b>Step Resolution:</b>	-
<b>Series:</b>	-
<b>Packaging:</b>	Tape & Reel (TR)
<b>Package / Case:</b>	28-SOP (0.311", 7.90mm) Exposed Pad + 2 Heat Tabs
<b>Output Configuration:</b>	Half Bridge (4)
<b>Operating Temperature:</b>	-40°C ~ 85°C (TA)
<b>Mounting Type:</b>	Surface Mount
<b>Motor Type - Stepper:</b>	-
<b>Motor Type - AC, DC:</b>	-
<b>Interface:</b>	On/Off
<b>Function:</b>	Driver - Fully Integrated, Control and Power Stage
<b>Current - Output:</b>	1A
<b>Applications:</b>	Media Player

Related products



**LA6242H-TRM-E**

IC MOTOR DRIVER PAR 28HSOP

[ON Semiconductor](#)

RFQ



**LA6245P-CL-TLM-E**

IC MOTOR DVR BTL 4CH 36HSOP

[ON Semiconductor](#)

RFQ



**LA6242**

[SANYO](#)

RFQ



**LA60X800128**

FUSE CARTRIDGE 800A 600VAC PUCK

[Littelfuse Inc.](#)

RFQ



**LA6245P-TLM-E**

IC MOTOR DVR BTL 4CH 36HSOP

[ON Semiconductor](#)

RFQ



**LA6242H-CL-TLM-E**

IC MOTOR DVR BRIDGE 4CH 28HSOP

[ON Semiconductor](#)

RFQ



**LA6242H**

[SANYO](#)

RFQ



**LA6261**

[SANYO](#)

RFQ



**LA6242H-E**

IC MOTOR DVR BRIDGE 4CH 28HSOP

[ON Semiconductor](#)

RFQ



**LA6261-TE-L-E**

IC MOTOR DVR BTL 6CH 36HSOP

[ON Semiconductor](#)

RFQ

Guess You May Looking For

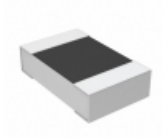


**PHP00603E1582BST1**

RES SMD 15.8K OHM 0.1% 3/8W 0603

[Vishay Thin Film](#)

RFQ



**RP73D2A2K05BTG**

RES SMD 2.05K OHM 0.1% 1/8W 0805

[TE Connectivity Passive Product](#)

RFQ



**RG2012V-2260-W-T5**

RES SMD 226 OHM 0.05% 1/8W 0805

[Susumu](#)

RFQ

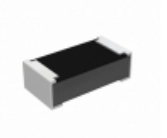


**RG2012V-1581-W-T5**

RES SMD 1.58KOHM 0.05% 1/8W 0805

[Susumu](#)

RFQ

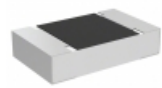


**RCP0603B390RGE B**

RES SMD 390 OHM 2% 3.9W 0603

[Vishay Dale](#)

RFQ

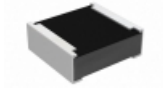


**TNPU0805280KBZEN00**

RES SMD 280K OHM 0.1% 1/8W 0805

[Vishay Dale](#)

RFQ

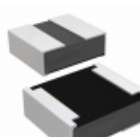


**RCP0505B130RGE B**

RES SMD 130 OHM 2% 5W 0505

[Vishay Dale](#)

RFQ

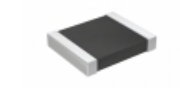


**RCP0505W1K10GS3**

RES SMD 1.1K OHM 2% 5W 0505

[Vishay Dale](#)

RFQ

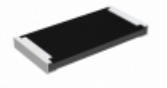


**RT1210WRD07120KL**

RES SMD 120K OHM 0.05% 1/4W 1210

[Yageo](#)

RFQ



**RCP2512B110RJE A**

RES SMD 110 OHM 5% 22W 2512

[Vishay Dale](#)

RFQ

