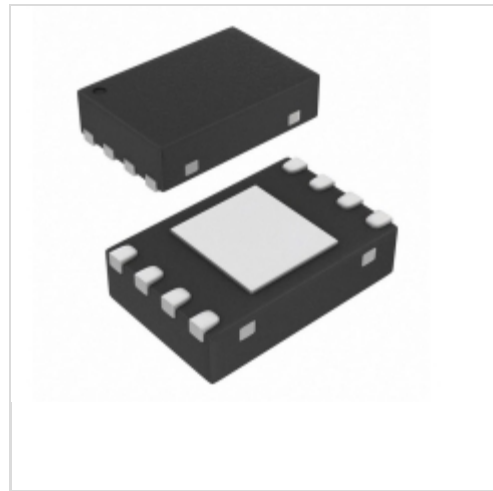


**ISL89165FRTBZ-T**



**Intersil**

MOSFET DRIVER 2CH 5.0V 6A 8TDFN

Lead free / RoHS Compliant

Integrated Circuits (ICs)

[ISL89165FRTBZ-T.pdf](#)

**Buy Now**

**Out Stock**

**0 pcs**

Minimum:1

Multiples:100

Manufacturer lead time 10 weeks

part#ISL89165FRTBZ-T is available, see description of ISL89165FRTBZ-T as below .

use the request quote form to request ISL89165FRTBZ-T price and lead time.

Buy Electronic Components at zeanoit.com .we are an independent distributor of electronic components with extensive inventory in stock.

The price and lead time for ISL89165FRTBZ-T depending on the quantity required, availability and warehouse location.Contact us today and our sales team will send you quotation soon.

Email: sales@zeanoit.com

Shopping Process

**1**

**Confirm the product**

**2**

**submit the order**

**3**

**payment**

**4**

**wait for delivery**

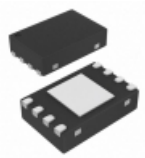
**5**

**receive the goods**

Specifications

<b>Voltage - Supply:</b>	4.5 V ~ 16 V
<b>Supplier Device Package:</b>	8-TDFN (3x3)
<b>Series:</b>	-
<b>Rise / Fall Time (Typ):</b>	20ns, 20ns
<b>Packaging:</b>	Tape & Reel (TR)
<b>Package / Case:</b>	8-WDFN Exposed Pad
<b>Operating Temperature:</b>	-40°C ~ 125°C (TJ)
<b>Number of Drivers:</b>	2
<b>Mounting Type:</b>	Surface Mount
<b>Logic Voltage - VIL, VIH:</b>	1.85V, 3.15V
<b>Input Type:</b>	Inverting, Non-Inverting
<b>Gate Type:</b>	N-Channel MOSFET
<b>Driven Configuration:</b>	Low-Side
<b>Current - Peak Output (Source, Sink):</b>	6A, 6A
<b>Channel Type:</b>	Independent

Related products



**ISL89165FRTCZ-T**

MOSFET DRIVER 2CH 6A 8TDFN

[Intersil](#)

RFQ

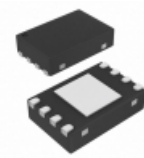


**ISL89165FBECZ**

MOSFET DRIVER 2CH 6A 8SOIC

[Intersil](#)

RFQ

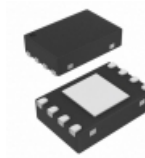


**ISL89165FRTBZ**

MOSFET DRIVER 2CH 5.0V 6A 8TDFN

[Intersil](#)

RFQ

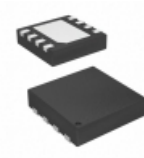


**ISL89165FRTAZ**

MOSFET DRIVER 2CH 3.3V 6A 8TDFN

[Intersil](#)

RFQ

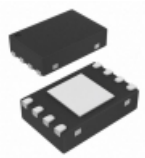


**ISL89166FRTAZ**

IC MOSFET DRIVER 2CH 6A 8TDFN

[Intersil](#)

RFQ

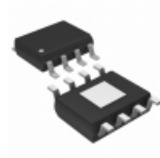


**ISL89165FRTCZ**

MOSFET DRIVER 2CH 6A 8TDFN

[Intersil](#)

RFQ



**ISL89166FBEAZ-T**

IC MOSFET DRIVER 2CH 6A 8SOIC

[Intersil](#)

RFQ



**ISL89165FBECZ-T**

MOSFET DRIVER 2CH 6A 8SOIC

[Intersil](#)

RFQ

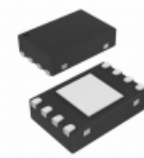


**ISL89166FBEAZ**

IC MOSFET DRIVER 2CH 6A 8SOIC

[Intersil](#)

RFQ



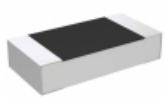
**ISL89165FRTAZ-T**

MOSFET DRIVER 2CH 3.3V 6A 8TDFN

[Intersil](#)

RFQ

Guess You May Looking For

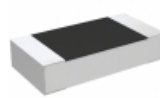


**CPF1206B140KE1**

RES SMD 140K OHM 0.1% 1/8W 1206

[TE Connectivity Passive Product](#)

RFQ

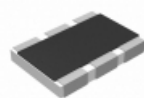


**CPF1206B30KE1**

RES SMD 30K OHM 0.1% 1/8W 1206

[TE Connectivity Passive Product](#)

RFQ

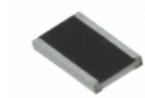


**RC1218DK-076K34L**

RES SMD 6.34K OHM 1W 1812 WIDE

[Yageo](#)

RFQ



**RCL12183R40FKEK**

RES SMD 3.4 OHM 1W 1812 WIDE

[Vishay Dale](#)

RFQ

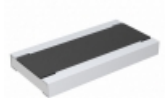


**RNCF2512BTC1M07**

RES SMD 1.07M OHM 0.1% 1/2W 2512

[Stackpole Electronics Inc.](#)

RFQ



**RCWE1020R237FKEA**

RES SMD 0.237 OHM 2W 2010 WIDE

[Vishay Dale](#)

RFQ

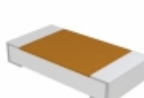


**RG1608N-3162-B-T5**

RES SMD 31.6KOHM 0.1% 1/10W 0603

[Susumu](#)

RFQ



**RCWE2512R430JKEA**

RES SMD 0.43 OHM 5% 2W 2512

[Vishay Dale](#)

RFQ

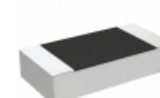


**RNCF2512BKE475R**

RES SMD 475 OHM 0.1% 3/4W 2512

[Stackpole Electronics Inc.](#)

RFQ



**RP73D2B80K6BTD**

RES SMD 80.6K OHM 0.1% 1/4W 1206

[TE Connectivity Passive Product](#)

RFQ