

**CAT25C256LI-G**



[AMI Semiconductor / ON Semiconductor](#)

IC EEPROM 256KBIT 5MHZ 8DIP  
Lead free / RoHS Compliant  
Integrated Circuits (ICs)

[CAT25C256LI-G.pdf](#)

**Buy Now**

Images are for reference only.

See Product Specifications for product details.

If you are interested to buy CAT25C256LI-G, Just Email us.

Sales@zeanoit.com

our sales team will reply you within 24 hours

Shopping Process

**1**

Confirm the product

**2**

submit the order

**3**

payment

**4**

wait for delivery

**5**

receive the goods

Specifications

<b>Voltage - Supply:</b>	1.8 V ~ 5.5 V
<b>Supplier Device Package:</b>	8-PDIP
<b>Speed:</b>	5MHz
<b>Series:</b>	-
<b>Packaging:</b>	Tube
<b>Package / Case:</b>	8-DIP (0.300", 7.62mm)
<b>Operating Temperature:</b>	-40°C ~ 85°C (TA)
<b>Memory Type:</b>	Non-Volatile
<b>Memory Size:</b>	256Kb (32K x 8)
<b>Memory Format:</b>	EEPROM
<b>Interface:</b>	SPI Serial

Related products



**CAT25C256K**  
CATALYST

RFQ



**CAT25C256KA**  
CATALYST

RFQ



**CAT25C256XE**  
CAT

RFQ



**CAT25C256XI-TE13**  
CATALYST

RFQ



**CAT25C256XI**  
CATALYST

RFQ



**CAT25C32GD2I-TE13**  
CATALYST

RFQ



**CAT25C256X-1.8**  
CAT

RFQ



**CAT25C256KI**  
CATALYST

RFQ



**CAT25C256KI-26520T**  
CATALYST

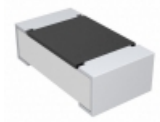
RFQ



**CAT25C256K-TE13**  
CSI

RFQ

Guess You May Looking For



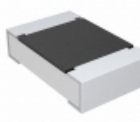
**CRCW06038R66FKEA**  
RES SMD 8.66 OHM 1% 1/10W 0603  
Vishay Dale

RFQ



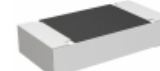
**ERJ-2GEJ752X**  
RES SMD 7.5K OHM 5% 1/10W 0402  
Panasonic Electronic Components

RFQ



**CRCW08055K23FKEB**  
RES SMD 5.23K OHM 1% 1/8W 0805  
Vishay Dale

RFQ



**CRGV1206F274K**  
RES SMD 274K OHM 1% 1/4W 1206  
TE Connectivity Passive Product

RFQ



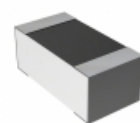
**RNCF0603DTC330K**  
RES SMD 330K OHM 0.5% 1/10W 0603  
Stackpole Electronics Inc.

RFQ



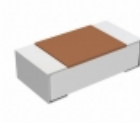
**RNCF0805DTC4R70**  
RES SMD 4.7 OHM 0.5% 1/8W 0805  
Stackpole Electronics Inc.

RFQ



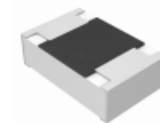
**CPF0603F8K45C1**  
RES SMD 8.45K OHM 1% 1/16W 0603  
TE Connectivity Passive Product

RFQ



**TRR03EZPF1432**  
RES SMD 14.3K OHM 1% 1/10W 0603  
Rohm Semiconductor

RFQ



**ERJ-S06F1021V**  
RES SMD 1.02K OHM 1% 1/8W 0805  
Panasonic Electronic Components

RFQ



**RT1206DRD0748R7L**  
RES SMD 48.7 OHM 0.5% 1/4W 1206  
Yageo

RFQ