

04661.25NR



[Hamlin / Littelfuse](#)

FUSE BOARD MOUNT 1.25A 63VAC/VDC

Lead free / RoHS Compliant

Circuit Protection

[1.04661.25NR.pdf](#)

[2.04661.25NR.pdf](#)

Buy Now

Out Stock

0 pcs

Minimum:1

Multiples:100

Manufacturer lead time 10 weeks

PRICE

5000 pcs	\$0.306
10000 pcs	\$0.295

We can supply Hamlin / Littelfuse 04661.25NR, use the request quote form to request 04661.25NR price, Hamlin / Littelfuse Datasheet PDF and lead time. Zeanoit.com is a professional electronic components distributor. With 3+ Million line items of available electronic components can ship in short lead-time, over 250 thousand part numbers of electronic components in stock for immediately delivery, which may include part number 04661.25NR. The price and lead time for 04661.25NR depending on the quantity required, availability and warehouse location.

Shopping Process

1

Confirm the product

2

submit the order

3

payment

4

wait for delivery

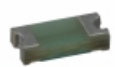
5

receive the goods

Specifications

Voltage Rating - DC:	63V
Voltage Rating - AC:	63V
Size / Dimension:	0.125" L x 0.060" W x 0.023" H (3.18mm x 1.52mm x 0.58mm)
Series:	SlimLine™ 466
Response Time:	Fast
Packaging:	Tape & Reel (TR)
Package / Case:	1206 (3216 Metric)
Operating Temperature:	-55°C ~ 90°C
Mounting Type:	Surface Mount
Melting I²t:	0.064
Fuse Type:	Board Mount (Cartridge Style Excluded)
DC Cold Resistance:	0.059 Ohm
Current Rating:	1.25A
Color:	-
Breaking Capacity @ Rated Voltage:	50A
Approvals:	CSA, UL

Related products



04661.25NRHF

FUSE BOARD MOUNT 1.25A 63VAC/VDC
[Littelfuse Inc.](#)

RFQ



046603.5NR

[Littelfuse](#)

RFQ



04661.75NR

FUSE BOARD MOUNT 1.75A 63VAC/VDC
[Littelfuse Inc.](#)

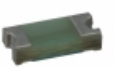
RFQ



046602.5WR

FUSE BRD MNT 2.5A 32VAC/VDC 1206
[Littelfuse Inc.](#)

RFQ



046601.5NRHF

FUSE BRD MNT 1.5A 63VAC/VDC 1206
[Littelfuse Inc.](#)

RFQ



0466111008

MINIFIT CPI LCP VERT BLK HDR
[Molex, LLC](#)

RFQ



04661.75NRHF

FUSE BOARD MOUNT 1.75A 63VAC/VDC
[Littelfuse Inc.](#)

RFQ



0467-0-15-01-21-02-04-0

CONN PIN RCPT .015-.022 PRESSFIT
[Mill-Max Manufacturing Corp.](#)

RFQ



046602.5NRHF

FUSE BRD MNT 2.5A 32VAC/VDC 1206
[Littelfuse Inc.](#)

RFQ



046602.5NR

FUSE BRD MNT 2.5A 32VAC/VDC 1206
[Littelfuse Inc.](#)

RFQ

Guess You May Looking For



BK/GDC-63MA

FUSE GLASS 63MA 250VAC 5X20MM
[Eaton](#)

RFQ



8020.0606.PT

FUSE CERAMIC 25A 250VAC 3AB 3AG
[Schurter Inc.](#)

RFQ



0263004.WRT2

FUSE BOARD MOUNT 4A 250VAC AXIAL
[Littelfuse Inc.](#)

RFQ



BK1/MCRW300MA

FUSE BOARD MNT 300MA 125VAC/VDC
[Eaton](#)

RFQ



0215012.MXE

FUSE CERAMIC 12A 250VAC 5X20MM
[Littelfuse Inc.](#)

RFQ



2029-09-SM-RPLF

GAS DISCHARGE TUBE
[Bourns Inc.](#)

RFQ



SL1024B300RF

GDT 300V 20KA T/H FAIL SHORT
[Littelfuse Inc.](#)

RFQ



0ZCA0035FF2G

PTC RESTTBLE 0.35A 16V CHIP 1206
[Bel Fuse Inc.](#)

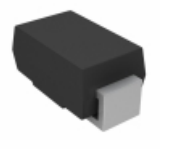
RFQ



30KPA58CA

TVS DIODE 58VWM 92.4VC AXIAL
[Littelfuse Inc.](#)

RFQ



P4SMA27CA-E3/61

TVS DIODE 23.1VWM 37.5VC SMA
[Vishay Semiconductor Diodes Division](#)

RFQ