

0805L005/30YR



Hamlin / Littelfuse

PTC RESET 30V 0.05A 0805 SMD

Lead free / RoHS Compliant

Circuit Protection

[0805L005/30YR.pdf](#)

Buy Now

part#0805L005/30YR is available, see description of 0805L005/30YR as below .

use the request quote form to request 0805L005/30YR price and lead time.

Buy Electronic Components at zeanoit.com .we are an independent distributor of electronic components with extensive inventory in stock.

The price and lead time for 0805L005/30YR depending on the quantity required, availability and warehouse location.Contact us today and our sales team will send you quotation soon.

Email: sales@zeanoit.com

Out Stock

0 pcs

Minimum:1

Multiples:100

Manufacturer lead time 10 weeks

PRICE

4000 pcs **\$1.049**

8000 pcs **\$1.009**

Shopping Process

1

Confirm the product

2

submit the order

3

payment

4

wait for delivery

5

receive the goods

Specifications

Voltage - Max:	30V
Type:	Polymeric
Time to Trip:	1.5s
Thickness (Max):	0.049" (1.25mm)
Size / Dimension:	0.083" L x 0.053" W (2.10mm x 1.35mm)
Series:	POLY-FUSE®, 0805L
Resistance - Post Trip (R1) (Max):	20 Ohm
Resistance - Initial (Ri) (Min):	3.6 Ohm
Resistance - 25°C (Typ):	-
Ratings:	AEC-Q200
Packaging:	Tape & Reel (TR)
Package / Case:	0805 (2012 Metric), Concave
Operating Temperature:	-40°C ~ 85°C
Mounting Type:	Surface Mount
Lead Spacing:	-
Height - Seated (Max):	-
Current - Trip (It):	150mA
Current - Max:	40A
Current - Hold (Ih) (Max):	50mA
Approvals:	-

Related products



0805J6308P20BCT

CAP CER 8.2PF 630V COG/NPO 0805

[Knowles Syfer](#)

RFQ



0805L035YRHF

FUSE PTC 6V .35A RESETTABLE 0805

[Littelfuse Inc.](#)

RFQ



0805L020YR

PTC RESETTABLE 9V .200A SMD 0805

[Littelfuse Inc.](#)

RFQ



0805J6308P20DCR

CAP CER 8.2PF 630V COG/NPO 0805

[Knowles Syfer](#)

RFQ



0805L010YR

PTC RESET 15V .100A SMD 0805

[Littelfuse Inc.](#)

RFQ



0805L010/24YR

PTC 24V POLYFUSE 0805 0.10A

[Littelfuse Inc.](#)

RFQ



0805L035YR

PTC RESETTABLE 6V .350A SMD 0805

[Littelfuse Inc.](#)

RFQ



0805J6308P20DCT

CAP CER 8.2PF 630V COG/NPO 0805

[Knowles Syfer](#)

RFQ



0805J6308P20CCT

CAP CER 8.2PF 630V COG/NPO 0805

[Knowles Syfer](#)

RFQ



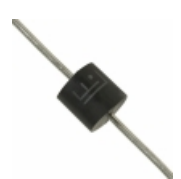
0805J6308P20CCR

CAP CER 8.2PF 630V COG/NPO 0805

[Knowles Syfer](#)

RFQ

Guess You May Looking For



5KP48A

TVS DIODE 48VWM 77.4VC AXIAL

[Littelfuse Inc.](#)

RFQ



1.5SMC220A

TVS DIODE 185VWM 328VC SMD

[Littelfuse Inc.](#)

RFQ



ESD8011MUT5G

TVS DIODE 5.5VWM 19VC X3DFN2

[ON Semiconductor](#)

RFQ



SLD8S33A

TVS DIODE 33VWM 53.3VC SMT0263

[Littelfuse Inc.](#)

RFQ

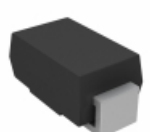


1.5KE100CA-T

TVS DIODE 85.5VWM 137VC DO201

[Diodes Incorporated](#)

RFQ



SMA5J40CA-E3/61

TVS DIODE 40VWM 64.5VC SMA

[Vishay Semiconductor Diodes Division](#)

RFQ

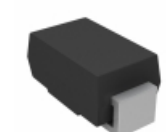


SMBJ17A-M3/5B

TVS DIODE 17VWM 27.6VC DO-215AA

[Vishay Semiconductor Diodes Division](#)

RFQ



P4SMA7.5CAHE3/5A

TVS DIODE 6.4VWM 11.3VC SMA

[Vishay Semiconductor Diodes Division](#)

RFQ



P6SMB47AHE3/52

TVS DIODE 40.2VWM 64.8VC SMB

[Vishay Semiconductor Diodes Division](#)

RFQ



SMCJ8.0CA-TP

TVS DIODE 8VWM 13.6VC SMC

[Micro Commercial Co](#)

RFQ

