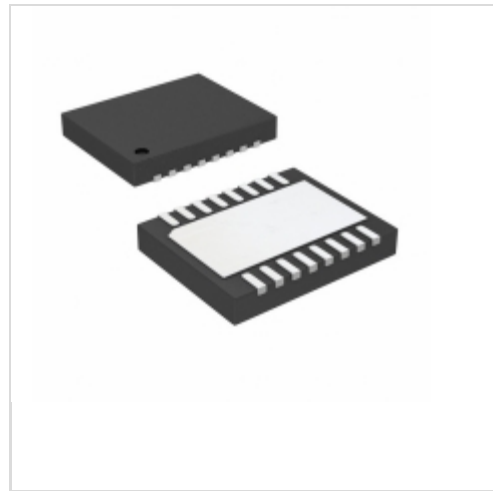


**LTC2946CDE#PBF**



[Linear Technology / Analog Devices](#)

IC ENERGY MONITOR I2C 16DFN

Lead free / RoHS Compliant

Integrated Circuits (ICs)

[LTC2946CDE#PBF.pdf](#)

**Buy Now**

We can supply Linear Technology / Analog Devices LTC2946CDE#PBF, use the request quote form to request LTC2946CDE#PBF price, Linear Technology / Analog Devices Datasheet PDF and lead time. Zeanoit.com is a professional electronic components distributor. With 3+ Million line items of available electronic components can ship in short lead-time, over 250 thousand part numbers of electronic components in stock for immediately delivery, which may include part number LTC2946CDE#PBF. The price and lead time for LTC2946CDE#PBF depending on the quantity required, availability and warehouse location.

**In Stock**

**109 pcs**

Minimum:1

Multiples:100

Manufacturer lead time 10 weeks

**PRICE**

|         |        |
|---------|--------|
| 1 pcs   | \$8.44 |
| 25 pcs  | \$5.64 |
| 100 pcs | \$4.80 |

Shopping Process

**1**

Confirm the product

**2**

submit the order

**3**

payment

**4**

wait for delivery

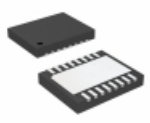
**5**

receive the goods

Specifications

|                                 |                      |
|---------------------------------|----------------------|
| <b>Voltage - Supply:</b>        | 2.7 V ~ 100 V        |
| <b>Voltage - I/O Low:</b>       | -                    |
| <b>Voltage - I/O High:</b>      | -                    |
| <b>Supplier Device Package:</b> | 16-DFN (4x3)         |
| <b>Series:</b>                  | -                    |
| <b>Packaging:</b>               | Tube                 |
| <b>Package / Case:</b>          | 16-WDFDN Exposed Pad |
| <b>Operating Temperature:</b>   | 0°C ~ 70°C           |
| <b>Mounting Type:</b>           | Surface Mount        |
| <b>Meter Type:</b>              | Single Phase         |
| <b>Measurement Error:</b>       | 0.4%                 |
| <b>Input Impedance:</b>         | -                    |
| <b>Current - Supply:</b>        | 900µA                |

Related products

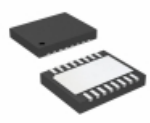


**LTC2946CDE-1#PBF**

IC ENERGY MONITOR I2C 16DFN

[Linear Technology](#)

RFQ

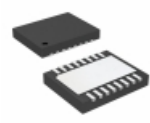


**LTC2946CDE#TRPBF**

IC ENERGY MONITOR I2C 16DFN

[Linear Technology](#)

RFQ



**LTC2946CDE-1#TRPBF**

IC ENERGY MONITOR I2C 16DFN

[Linear Technology](#)

RFQ

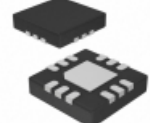


**LTC2946CMS#TRPBF**

IC ENERGY MONITOR I2C 16MSOP

[Linear Technology](#)

RFQ



**LTC2945IUD-1#PBF**

IC POWER MONITOR I2C 12-QFN

[Linear Technology](#)

RFQ



**LTC2945IUD#TRPBF**

IC POWER MONITOR I2C 12-QFN

[Linear Technology](#)

RFQ

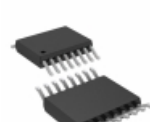


**LTC2945IUD#PBF**

IC POWER MONITOR I2C 12-QFN

[Linear Technology](#)

RFQ

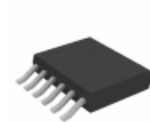


**LTC2946CMS#PBF**

IC ENERGY MONITOR I2C 16MSOP

[Linear Technology](#)

RFQ



**LTC2945IMS-1#TRPBF**

IC POWER MONITOR I2C 12-MSOP

[Linear Technology](#)

RFQ



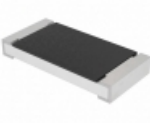
**LTC2945IUD-1#TRPBF**

IC POWER MONITOR I2C 12-QFN

[Linear Technology](#)

RFQ

Guess You May Looking For



**CRCW2010158RFKEFHP**

RES SMD 158 OHM 1% 1W 2010

[Vishay Dale](#)

RFQ



**CRGS2010J2K7**

RES SMD 2.7K OHM 5% 3/4W 2010

[TE Connectivity AMP Connectors](#)

RFQ



**RT0603CRB07160RL**

RES SMD 160 OHM 0.25% 1/10W 0603

[Yageo](#)

RFQ



**RG3216N-47R5-D-T5**

RES SMD 47.5 OHM 0.5% 1/4W 1206

[Susumu](#)

RFQ



**SMF21M0JT**

RES SMD 1M OHM 5% 2W 2616

[TE Connectivity Passive Product](#)

RFQ



**RNCF1210DTC187R**

RES SMD 187 OHM 0.5% 1/3W 1210

[Stackpole Electronics Inc.](#)

RFQ



**RNCF1210DTC732R**

RES SMD 732 OHM 0.5% 1/3W 1210

[Stackpole Electronics Inc.](#)

RFQ



**RNCF1210DTC866R**

RES SMD 866 OHM 0.5% 1/3W 1210

[Stackpole Electronics Inc.](#)

RFQ



**RT1206CRD074R42L**

RES SMD 4.42 OHM 0.25% 1/4W 1206

[Yageo](#)

RFQ



**RG1005N-1022-D-T10**

RES SMD 10.2KOHM 0.5% 1/16W 0402

[Susumu](#)

RFQ